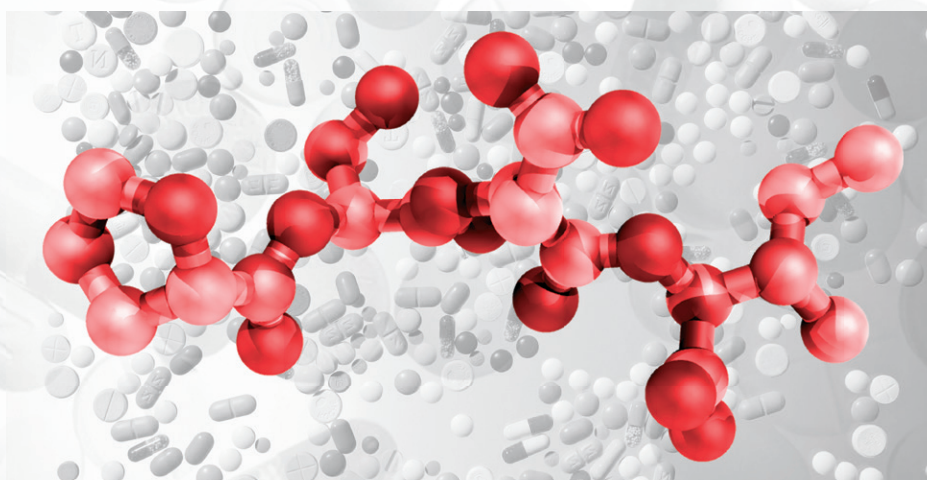


PSDI 2013

PROTEIN STRUCTURE
DETERMINATION IN INDUSTRY

21st PSDI 2013

Protein Structure Determination in Industry



3–6 November 2013

Hotel Astoria, Lucerne, Switzerland

Registration

<http://www.psd2013.org>
psdi2013@psi.ch

Deadline 1 September, 2013

Organisers

Vincent Olieric, PSI
Joachim Diez, Expose GmbH
Meitian Wang, PSI

Secretariat

Sonia Reber, PSI
Charlotte Heer, PSI

Scope

The PSDI meeting is held every year with the aim of presenting and discussing the latest developments of protein structure determination in the pharmaceutical industry. This event provides a forum bringing together researchers and commercial partners. On the last day of the conference there will be the opportunity to visit the Swiss Light Source and the Swiss X-ray free-electron laser injector facilities of the Paul Scherrer Institute.