



# ML Meeting with A. Krause ETH

Andreas Adelmann

## **AA & AK Short Intro / Goals**

**Albà Jacas Arnau - ML in context of the Coloss Project**

**Bellotti Renato - Automatic Patient Planning**

**Romana Boiger - Inverse Models in Accelerator and Aerosol Physics**

**Nikolaos Prasianakis - Digital Twins for Lattice- Boltzmann modelling**

## **Short Break**

**Jonas Rothfuss - PAC-Bayesian Approaches to Meta-Learning**

**Anastasia Makarova - Risk-averse Bayesian Optimization**

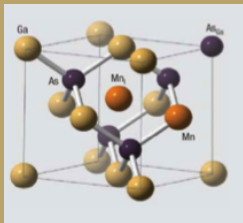
**Parnian Kassraie - Contextual Bandits with Neural Networks**

**Sebastian Curi - Robust and efficient Model-based Reinforcement Learning**

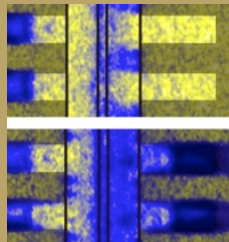
## **More discussions**

# Unsere Mission

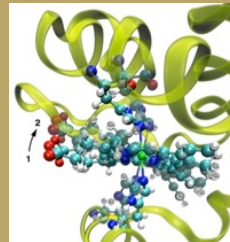
Materie und Material



Energie und Umwelt



Mensch und Gesundheit



Entwicklung  
Bau  
Betrieb



Grossforschungs-  
anlagen



Nutzer aus dem In- und Ausland  
Forschung und Industrie

mehr als 2400 externe Nutzer/Jahr  
(39 Experimentierstationen)

Wissen & Kompetenz



Ausbildung



Transfer in  
Industrie

