


















AWI General Introduction

Bi-Monthly Meeting 7902 Host

 Wednesday 17 Aug 2022, 09:00 → 10:30 Europe/Zurich

 WHGA/001 (Auditorium) (PSI)

- | | | |
|---|---|--|
| 09:00 | → 09:15 AWI General Update |  15m |
| Speaker: Alun Ashton (PSI - Paul Scherrer Institut) | | |
| 09:15 | → 10:20 7902 Presentations | |
| Convener: Markus Janousch (PSI - Paul Scherrer Institut) | | |
| 09:15 | Group Overlew |  10m |
| Speaker: Markus Janousch (PSI - Paul Scherrer Institut) | | |
|  AWI_Department_M... | | |
| 09:25 | pyzebra |  10m |
| Speaker: Ivan USOV (PSI - Paul Scherrer Institut) | | |
|  pyzebra.pdf | | |
| 09:35 | The REDML Project |  15m |
| Speaker: Piero Gasparotto | | |
| 09:50 | Protein Crystallography – Spot Finding and Indexing for fast Experiment Feedback |  10m  Minutes |
| Speaker: Hans-Christian Stadler KleeB (PSI - Paul Scherrer Institut) | | |
|  22-08-Hcs.pdf | | |
| 10:00 | TOMCAT data reduction and processing pipelines development |  10m |
| Speaker: Jun Zhu (PSI - Paul Scherrer Institut) | | |
|  AWI_department_m... | | |
| 10:10 | How Beamline Scientists Interact with Reconstruction Software |  10m |
| Speaker: Alain Studer (PSI - Paul Scherrer Institut) | | |
|  SCD_170822_Alain... | | |

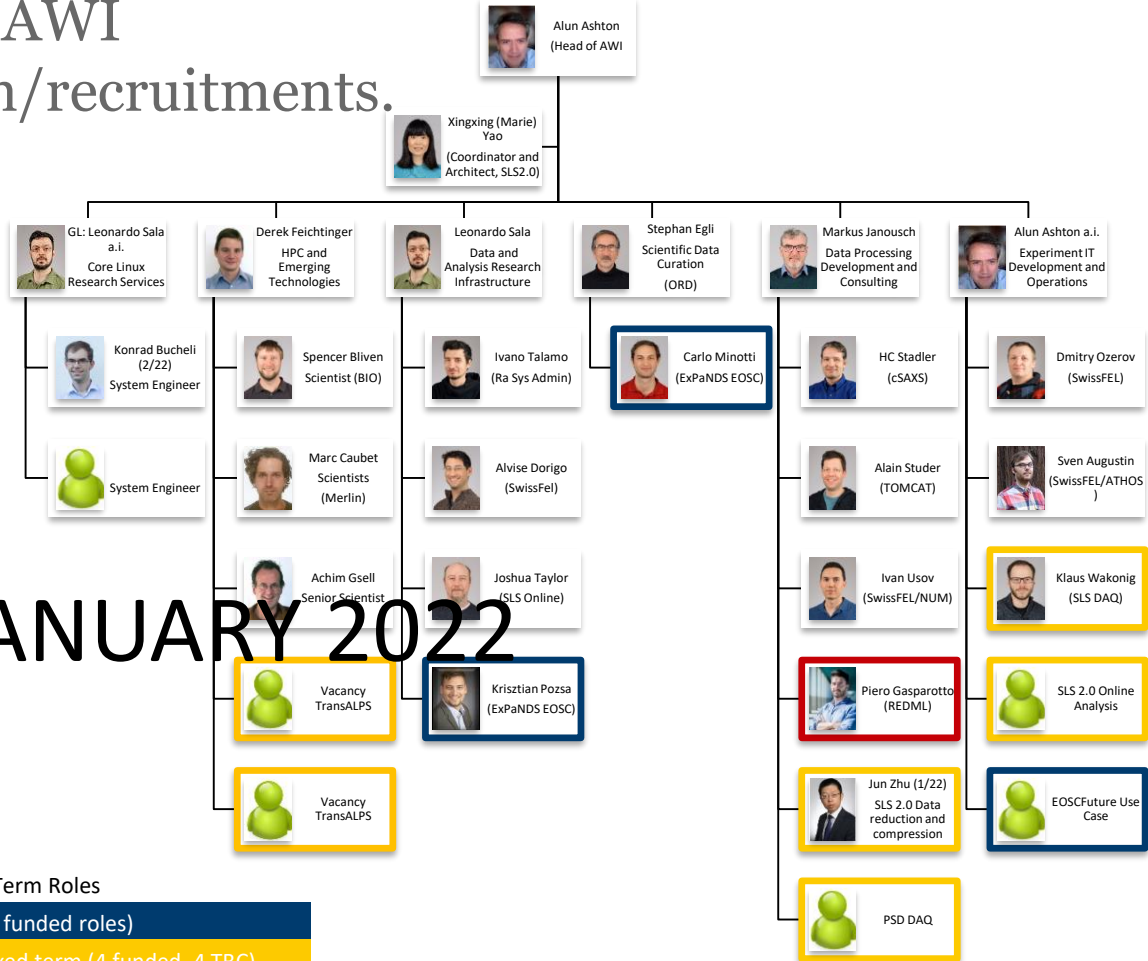
Updates on AWI organization/recruitments.

- Markus Janousch started as GL on 1/11/21
- Jun Zhu 1/1/22
- Konrad Bucheli 2/2/22
- [re-]advertise
 - GL & SE Core Linux Research Services
 - GL Experiment IT Development and Operations.
 - SE SLS 2.0 Online Analysis
 - 2x TransAlps roles

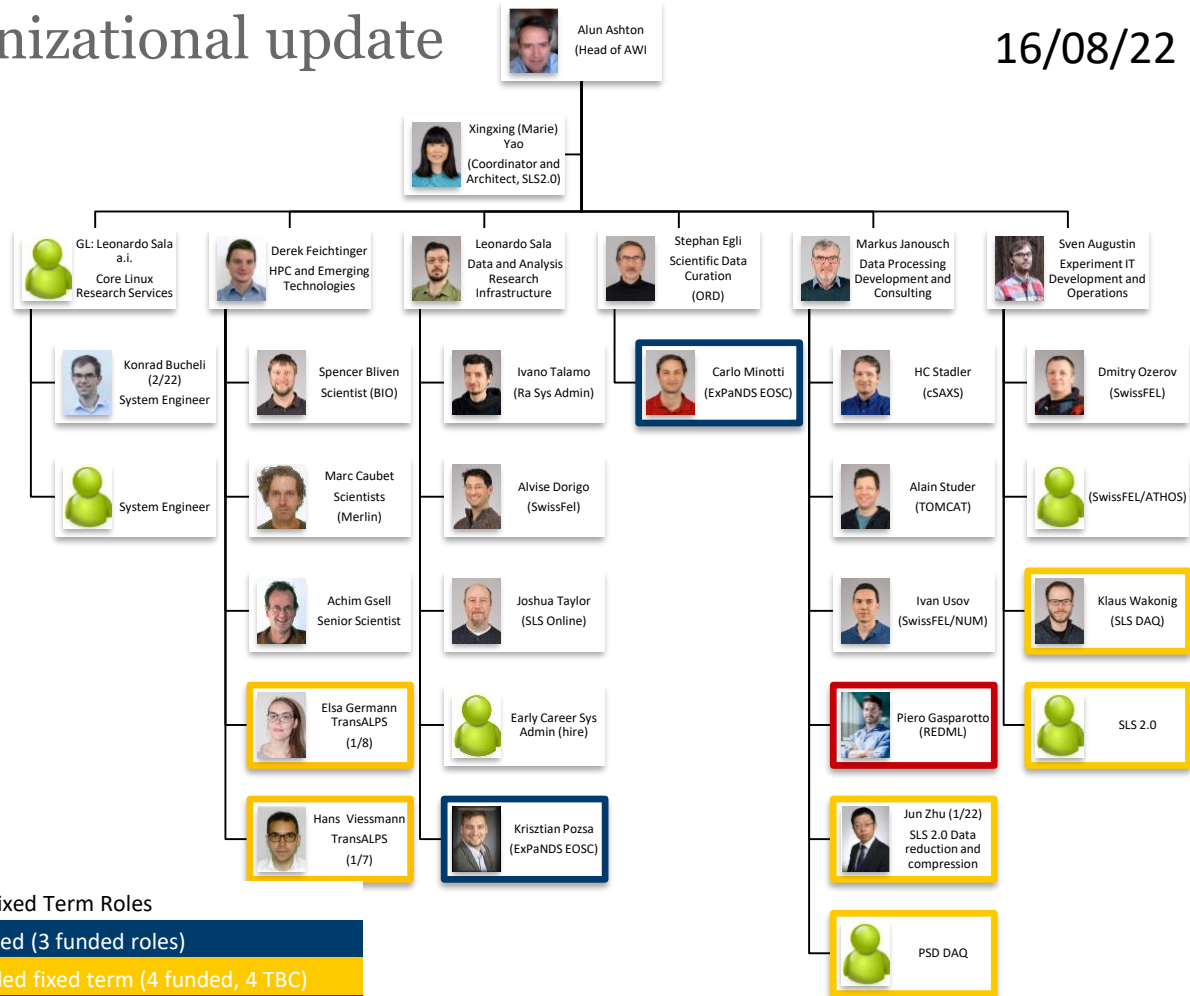
JANUARY 2022

Key to Fixed Term Roles

- EU Funded (3 funded roles)
- PSI Funded fixed term (4 funded, 4 TBC)
- Swiss Funded initiatives (3 funded, 3-4 TBC)



- Sven took over EIDO
- Hans and Else joined HET
- GL for Core linux research services announced soon
- Interviews for
 - System Engineer
 - Early Career Sys Adm
 - SLS 2.0 7901
- Advertising
 - RSE/SS in 7901
- Krisz now on ESOCFuture
- Viviana now our admin help



Key to Fixed Term Roles

EU Funded (3 funded roles)

PSI Funded fixed term (4 funded, 4 TBC)

Swiss Funded initiatives (3 funded, 3-4 TBC)



Progress towards our new 'home'

- There is a hole in the ground....
- Office layout plans/process
- Current target date for moving

Cost predictions for 2023

- Please work with the GL to forecast :
 - Conferences and workshops (assume anything before May will be virtual)
 - Training (actual training not just desirable, some prioritization may be necessary)
 - Personal IT hardware replacements

- ETH-ORD program
 - PSI as proposals in M1 and planning for M2
- NOBUGS!
- AI4SI EU PaN collaboration grant on AI in facilities unsuccessful
 - Alternatives now being investigated
- Site visits
 - CSCS (TansALPS and REDML), DLS (SLS2.0), ESRF (EOSC), NSLS II (SLS2.0), SLAC (for PSAC)....
- Department engagement
 - Investigations in place for late summer off-site visit or just a social event
 - Suggestions open for end of year event
 - E.g. bowling, skating..... followed by social event.
- Congratulations to Krisz!