

PAUL SCHERRER INSTITUT

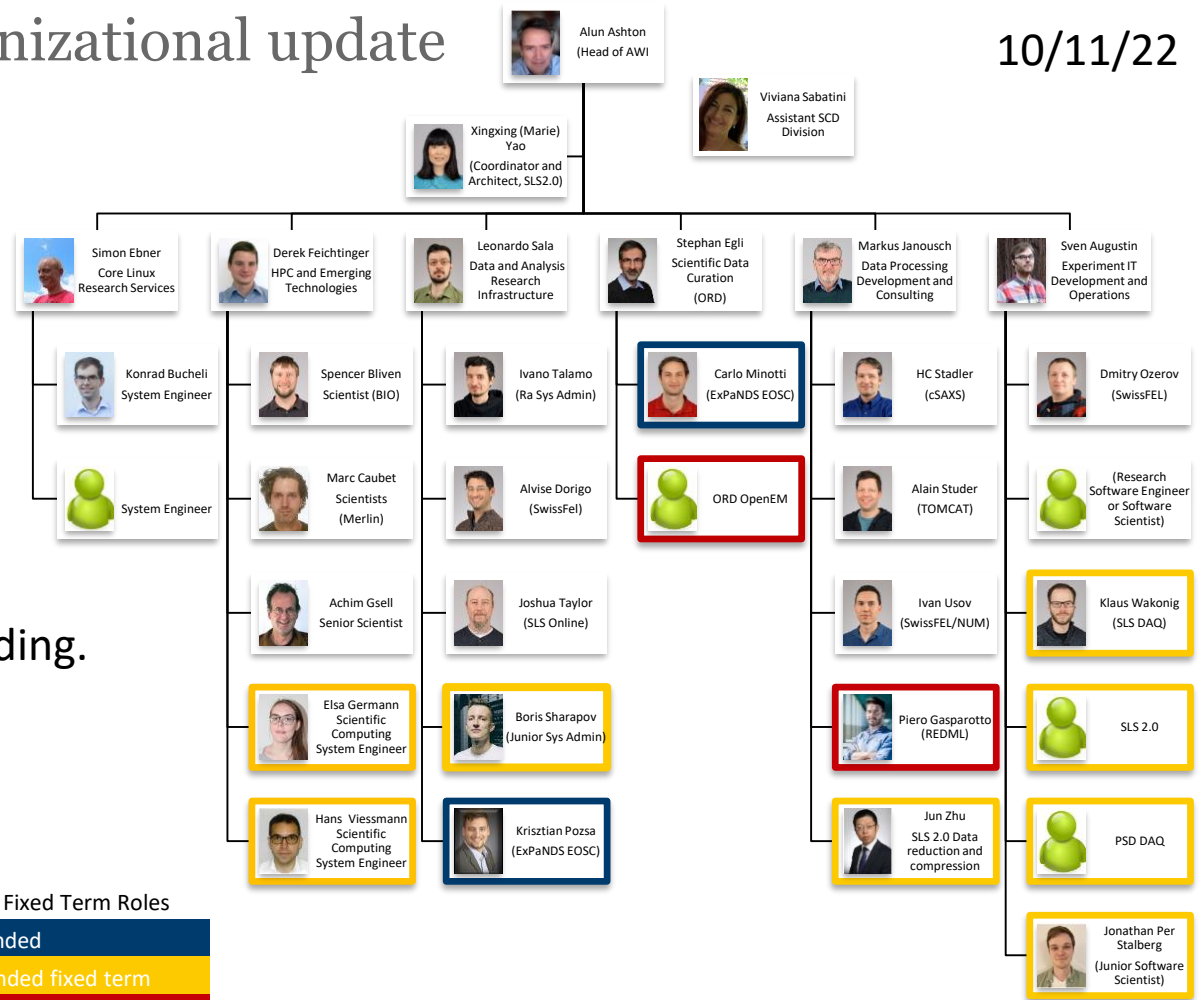


WIR SCHAFFEN WISSEN – HEUTE FÜR MORGEN

Alun Ashton

AWI Department meeting update

221212



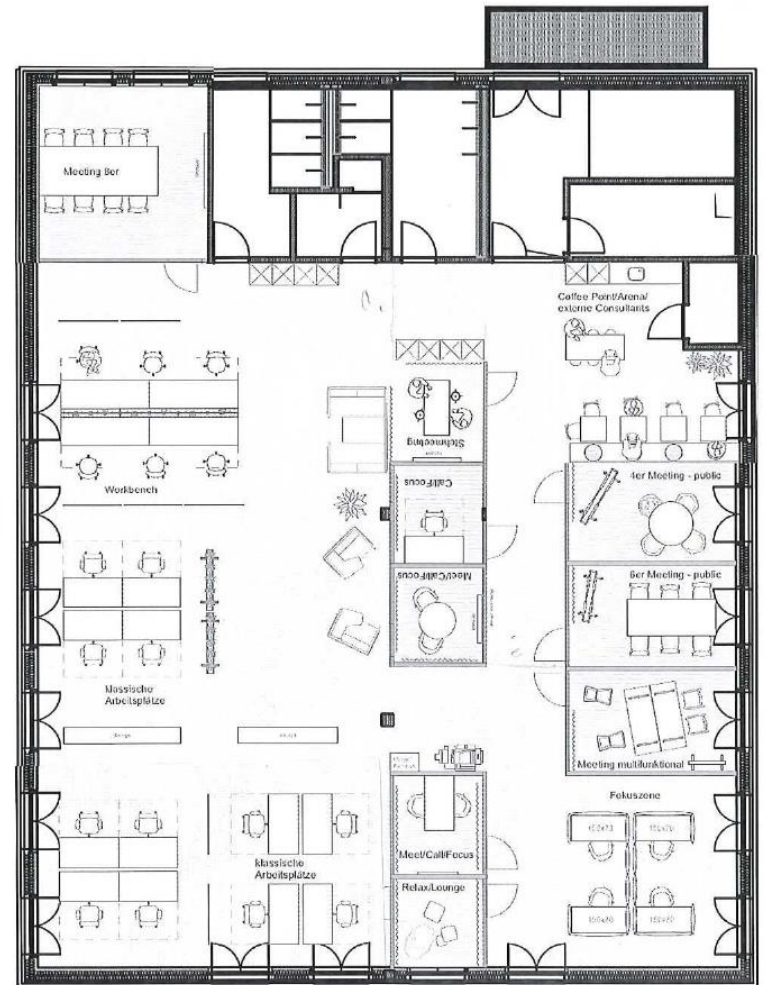
- 33 roles
- 28 in place
- Funding for 7 new roles pending.

Key to Fixed Term Roles

- EU Funded
- PSI Funded fixed term
- Swiss Funded initiatives

New offices

- Office ready date now likely to be summer 2023 (June/July)
- Likely layout ->
 - Uncertainty on the door zoning.
 - It was not possible to mirror the layout as positions of office walls limited.



S

SE

Some good news

- Budget was not cut, increase is aprox 2%
- Who can explain the salary increases?

2022 report card (in no particular order)?

- Managing COVID and working practice, in new offices and working hybrid
- Recruitments ongoing but new ones and with increased diversity
- SLS2 will be architected, responsibilities identified and proceeding with activities in 7901/2/3/4/6
- TransALPS will be progressing, managing the delays and opportunities.
- Linux strategy will be agreed and leading to RH8 and centrally supported remote access
- SwissFEL have clear coordinated and coherent development and support plan stronger than sum of the individual parts
- Cloud based services with broad PSI division uptake/adoption, roadmap for analysis services with links maybe to distributed file system?
- ML and Edge computing Exemplar and future dev plan
- Data analysis services, and framework with international partners that all fits into FAIR data direction
- ORD roles and projects on services and infrastructure covering ETH domain an EOSC/ExPaNDS
- Funded PSD hardware roadmap, data retention and usage policy + lifecycle and accommodation + TransALPS
- New SCD collaborations, e.g. materials cloud and SDSC
- Establishment of Swiss RSE community (<https://researchsoftware.org/>)
- Divisional, site, national and international reputation etc

Some bad news....

- I think these meetings should be more frequent with Groups hosting at least once a year!
- 2?





Klaus!

