

PAUL SCHERRER INSTITUT



Alexander Koschik :: Planungsbüro GFA / PM@PSI Projektteam :: Paul Scherrer Institute

PM@PSI and ePPM platform

AIT Quartalsinfo :: 29.08.2023

PM@PSI – Introducing unified and helpful PM processes at PSI



Guidance in managing a project



Unified understanding of phases & milestones and their meaning



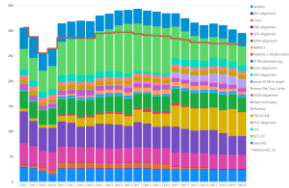
Unified, integrated and modular PM training

Software tool ePPM

Enhance transparency: PM data on a common platform

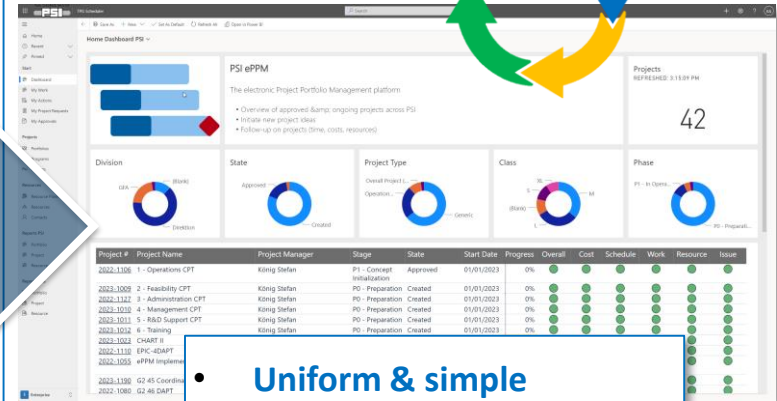
Digitalize booking/managing resources across departments

Present situation



- Laborious / Manually
- Data scattered
- Different tools
- No common
- No common standards

Improved situation



- Uniform & simple
- Common standards
- Common data base
- Planning & Analysis
- Overview & Transparency

Objectives & Goals

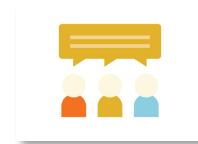
- Unified methodology & standards for PM at PSI
- Uniform and simple processes for initiation & execution of projects
- Overview & transparency of planned & running projects
- Overview of usage & demand of PSI resources

Deliverables

- **PM Handbooks** ('Navigationshilfe')
 - methodology, processes, standards
- **PM Directive (Weisung)**
 - roles, responsibilities, competencies, guidelines
- **Training concept**
- **Supporting software tool** to support methodology & processes
 - project management (planning, controlling)
 - portfolio management (selection & initiation, monitoring, resource handling)
 - corresponding (approval) processes
 - reporting, status overviews



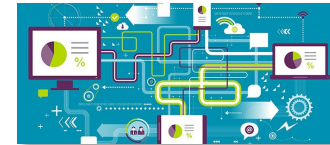
Guidance in managing a project



Unified understanding of phases & milestones and their meaning



Unified, integrated and modular PM training



Enhance transparency: PM data on common platform



Digitalize booking/ managing resources across departments

PM Handbook(s)

- PSI specific
- Compatible with PM standards
- 'Navigation Help' for project leaders

PM Directive (Weisung)

- Compatible with Signature & Competencies Directive
- Incorporates Heterogeneity of Project Landscape at PSI

ePPM Platform

- for Line- and Projectmngt
- Aggregate project data
- Achieve max. user acceptance and benefit

PM Training (Schulung)

- Modular building blocks
- E-learnings
- Start ~Q2 2024

ePPM – electronic Project Portfolio Management

PM@PSI – Status, Timeline, Pilot Phase



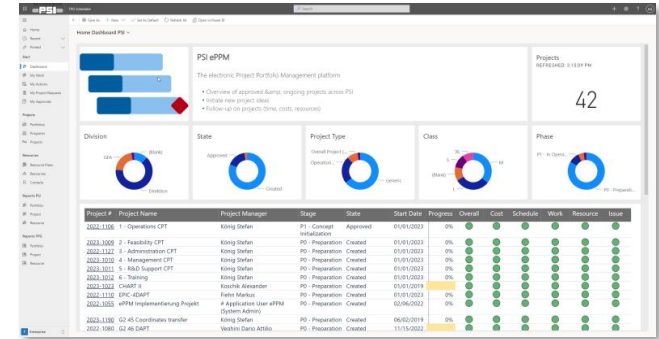
Status

- **Directive, manuals** ('Handbook'), **training** readily prepared for testing
- **ePPM platform** main configuration ready
- **Pilot phase** started
- Gradual addition of further pilot users (PM Basic training + onboarding)

Goals of the pilot phase

- **Evaluation of practicability** of directive, manuals, training & platform
- **Identification of PowerUsers** in Divisions
- **Collection** of real project and operational data
- Further detailed configurations in the ePPM platform

- **User interface & usage requiring little training**
 - Simple & self-explanatory operation
User-friendliness & user acceptance
 - Clean & simple user interface
yet extensive functionality for the savvy user
- **Planning functionality (rough to detailed planning)**
 - Schedule | Costs | Resources
 - Detailed planning options (essential for large projects)
 - **Resource demand** is in the focus
(no admin. overhead by reserving/blocking/releasing resources)
- **Portfolio/Program Views**
 - Summary of multiple project data
 - Structured overview of the PSI project landscape
- **Reporting functionality**
 - Extensive and flexible



- **MS Power Platform based solution**
- **Cloud-based & easy integration with MS365**
- **High configuration flexibility**
- **Small vs. large-scale planning:**
 - TPG Scheduler (Web-UI)
 - Project Classic (in Web-UI or Desktop Client)
- **Reporting via PowerBI (very powerful)**

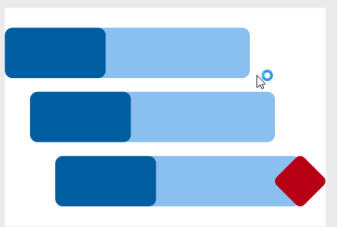
ePPM platform

Live Demo *OR* Set of Screenshot to show Functionality

MS365 Ribbon

- Home
- Recent
- Pinned
- Start
- Dashboard
- My Work
- My Actions
- My Project Requests
- My Approvals
- Projects
- Portfolios
- Programs
- Projects
- Resources
- Resource Plans
- Resources
- Contacts
- Reports PSI
- Portfolio
- Project
- Resource
- Reports TPG
- Portfolio
- Project
- Resource
- Enterprise

Home Dashboard PSI



PSI ePPM

The electronic Project Portfolio Management platform

- Overview of approved & ongoing projects across PSI
- Initiate new project ideas
- Follow-up on projects (time, costs, resources)

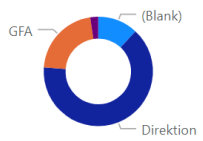
Data view area & further specific functions

Projects

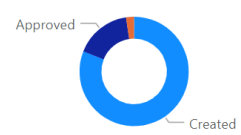
REFRESHED: YESTERDAY, 4:16:45 ...

42

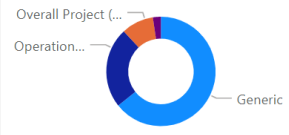
Division



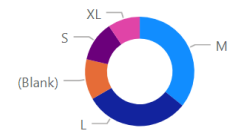
State



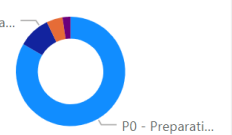
Project Type



Class



Phase



Project #	Project Name	Project Manager	Stage	State	Start Date	Progress	Overall	Cost	Schedule	Work	Resource	Issue
2022-1106	1 - Operations CPT	König Stefan	P1 - Concept Initialization	Approved	01/01/2023	0%	●	●	●	●	●	●
2023-1009	2 - Feasibility CPT	König Stefan	P0 - Preparation	Created	01/01/2023	0%	●	●	●	●	●	●
2022-1127	3 - Administration CPT	König Stefan	P0 - Preparation	Created	01/01/2023	0%	●	●	●	●	●	●
2023-1010	4 - Management CPT	König Stefan	P0 - Preparation	Created	01/01/2023	0%	●	●	●	●	●	●
2023-1011	5 - R&D Support CPT	König Stefan	P0 - Preparation	Created	01/01/2023	0%	●	●	●	●	●	●
2023-1012	6 - Training	König Stefan	P0 - Preparation	Created	01/01/2023	0%	●	●	●	●	●	●
2023-1023	CHART II	Koschik Alexander	P0 - Preparation	Created	01/01/2019	0%	●	●	●	●	●	●
2022-1110	EPIC-4DAPT	Fiehn Markus	P0 - Preparation	Created	01/01/2023	0%	●	●	●	●	●	●
2022-1055	ePPM Implementierung Projekt	# Application User ePPM (System Admin)	P0 - Preparation	Created	02/06/2022	0%	●	●	●	●	●	●
2023-1190	G2 45 Coordinates transfer	König Stefan	P0 - Preparation	Created	06/02/2019	0%	●	●	●	●	●	●
2022-1080	G2 46 DAPT	Veghini Dario Attilio	P0 - Preparation	Created	11/15/2022	0%	●	●	●	●	●	●

ePPM Menu

The screenshot displays the PSI TPG Scheduler interface. The top navigation bar includes the PSI logo and the text 'TPG Scheduler'. The main content area is titled 'My Project Requests' and features a table of project records. A red circle highlights the '+ New Project' button in the top navigation bar, with a tooltip that reads 'New Project' and 'Create a new Project record.'. A blue callout box at the bottom of the image contains the text 'Create projects'.

Project ID	Project Name	Start Date
2023-1023	CHART II	01.01.19
2023-1024	Demoprojekt GFA	01.01.25
2023-1020	IMPACT	01.01.21
2023-1022	Injektor 2 Modernisierung	01.01.23
2023-1021	Porthos (Pre-Project)	01.01.22

TPG Scheduler
(Web-UI)

Possibilities of Planning

- Cost KPI: Green
- Resource KPI: Green
- Project Estimates
- Progress: 0%

Using the same resource pool!
(daily updated data from IAM)

Project Online
(Classical MS Project to be used with Web-UI or Desktop Client)

TPG Scheduler

Search

Save Save & Close Apply Template Deactivate Refresh Check Access Process Flow Update Estimates

Home Rec Go to home page Pinned Start Dashboard My Work My Actions My Project Requests My Approvals Projects Portfolios Programs Projects Resources Resource Plans Resources Contacts Reports PSI Portfolio Project Resource Reports TPG Portfolio Project Resource

TPG Scheduler

Prep GFA Führungskräfteworkshop - Saved

Project

Koschik Alexander Project Manager Created Project State Green Overall KPI % Complete

Generic Project Active for less than one mi... P0 - Preparation (< 1 Min) P1 - Concept Initialization P2 - Planning Design P3 - Execution Manufacturing Production P4 - Implementation Exploitation Usage Completed

Details Overview PBS Schedule Cost Plan Resource Plan Risks Changes Status Update Reports Roles & Permissions Actions

General

Project Id 2023-1025

Project Name Prep GFA Führungskräfteworkshop

Description Testprojekt zu Demozwecken.

Project Manager Koschik Alexander

Start Date 24.05.23 Finish Date 31.05.23 Duration 7.00

PSI Project Type Generic

PSI Project Classification S

Schedule Type TPG Scheduler Project Online

Primary Org. Unit 8000 Grossforschungsanlagen

Primary Portfolio GFA

Primary Program ---

External Project Link ---

Project KPIs

Overall KPI Green

Schedule KPI Green

Cost KPI Green

Resource KPI Green

Project Estimates

Progress 0 %

Total Budget ---

Total Forecast ---

Total Actual ---

Total Effort (days) ---

Related Portfolios

+ New Portfolio relation... Refresh

Portfolio Project Count (Portfolio)

No data available

Enterprise

Entering project data

TPG Scheduler

Search

Save Save & Close Apply Template Deactivate Refresh Check Access Process Flow Update Estimates

Home Recent Pinned

Prep GFA Führungskräfteworkshop - Saved

Project

Koschik Alexander Project Manager Created Project State Green Overall KPI % Complete

Generic Project active for 15 minutes

P0 - Preparation (15 Min) P1 - Concept Initialization P2 - Planning Design P3 - Execution Manufacturing Production P4 - Implementation Exploitation Usage Completed

Details Overview PBS Schedule Cost Plan Resource Plan Risks Changes Status Update Reports Roles & Permissions Actions

Full Project Description

GFA Führungskräftetreffen

31. Mai 2023
Trotte/ Villigen

Detailed Description

Objectives

- Highlight motivation for ePPM
- Show Status
- Show Usage

Deliverables

- Presentation
- Live-Demo if possible

Out-of-Scope

- Detailed ePPM tool training
- Discussions about specific projects

Enterprise

Enter text...

Entering project data

Home Recent Pinned Start Dashboard My Work My Actions My Project Requests My Approvals

ZPT-CT3-Ersatz - Saved Project

Generic Project Active for 23 days

P0 - Preparation (23 D) P1 - Concept Init

Created Project State Green Overall KPI 77 % Complete

Resource planning via TPG Scheduler

Method 1

#	i	Name	% Co...	Start	Finish	Duration	Predecessors	Assigned Reso...
1		P0 Preparation / WTO tender	100	01.11.22	16.11.22	12 days		
2		project idea development	100	01.11.22	16.11.22	12 days		

9		detailplanning (room refurb. & C	100	26.12.22	04.05.23	94 days	7
10		techn. and safety requirements c	100	04.01.23	23.02.23	37 days	7;9SS
11		cost plan and timeline worked o	100	17.02.23	14.04.23	41 days	
12		orders placed for CT and room n	100	07.05.23	07.05.23	0 days	9;11
13		P3 Execution / Installation	0	30.08.23	28.09.23	22 days	8+40d;12
14		dismantling old CT and Flück-Lie	0	30.08.23	01.09.23	3 days	
15		room refurbishment	0	04.09.23	22.09.23	15 days	14
16		installation new CT	0	25.09.23	28.09.23	4 days	15;17SF
17		ready for commissioning	0	27.09.23	27.09.23	0 days	
18		P4 Implementation / IBN	0	27.09.23	20.10.23	18 days	17
19		Commissioning and training	0	27.09.23	06.10.23	8 days	
20		Mängelbehebungen	0	09.10.23	20.10.23	10 days	19
21		Project end / SAT	0	20.10.23	20.10.23	0 days	18

9I 92 9G

Menghini Marco 50% x Hi

Find resource Units

- 9332 Elektroanlagen 2 (2)
- 92 9332 Elektroanlagen 2
- MM Menghini Marco 50%
- 9350 Gebäudetechnik (2)
- HR Häfeili Reto 50%
- 9G 9350 Gebäudetechnik
- 9621 Überwachungssysteme (1)

SAVE CANCEL

Whole PSI Organisation

- Person resources
- Generic resources (groups, OU)

Generic resource = OU

Recommendation: Use generic resources

PSI TPG Scheduler

Search

Save Save & Close Deactivate Refresh Check Access Process Flow Update Estimates

SLS 2.0 - Saved Project

Generic Project Active for 9 days

P0 - Preparation (9 D) P1 - Concept Initia

Created Project State Green Overall KPI 0 % Complete

Resource planning via TPG Scheduler

Method 2

All Resource Plans for Project

Org Unit Resource Name

Org Unit	Resource Name	Phase / Task	Year	Total (days)	Jan	Feb	Mar	Apr	May	Jun	Jul	Aug	Sep	Oct	Nov	Dec
8010 Planungsbüro (5)				696.0	58.0	58.0	58.0	58.0	58.0	58.0	58.0	58.0	58.0	58.0	58.0	58.0
8110 Operation (5)				3'972.0	328.0	328.0	328.0	318.0	318.0	318.0	318.0	318.0	318.0	360.0	360.0	360.0
8120 Elektronenanlagen (5)				5'814.0	478.0	478.0	478.0	478.0	478.0	478.0	478.0	478.0	478.0	504.0	504.0	504.0
8130 Protonenanlagen (5)				0.0												
8140 Targetanlagen, Strahllinien und Simulat. (5)				402.0	40.0	40.0	40.0	32.0	32.0	32.0	32.0	32.0	32.0	30.0	30.0	30.0
8210 Kontrollsysteme (5)				16'908.0	1'40...	1'40...	1'40...	1'40...	1'40...	1'40...	1'40...	1'40...	1'40...	1'40...	1'40...	1'40...
8220 Elektronik (5)				13'242.0	1'142.0	1'142.0	1'142.0	1'120.0	1'120.0	1'120.0	1'096.0	1'096.0	1'096.0	1'056.0	1'056.0	1'056.0
8230 Messsysteme und Synchronisation (5)				4'358.4	363.2	363.2	363.2	363.2	363.2	363.2	363.2	363.2	363.2	363.2	363.2	363.2
8310 Entwicklung und Konstruktion (5)				2'688.0	272.0	272.0	272.0	224.0	224.0	224.0	224.0	224.0	224.0	176.0	176.0	176.0
8320 Produktionstechnik (5)				2'154.0	198.0	198.0	198.0	180.0	180.0	180.0	180.0	180.0	180.0	160.0	160.0	160.0
8330 Montagetechnik (5)				5'952.0	516.0	516.0	516.0	508.8	508.8	508.8	482.4	482.4	482.4	476.8	476.8	476.8
8340 Areal- und Projektkoordination (5)				2'400.0	200.0	200.0	200.0	200.0	200.0	200.0	200.0	200.0	200.0	200.0	200.0	200.0
8410 Hochfrequenz (6)				6'729.0	646.0	638.0	642.0	520.0	529.0	524.0	506.0	502.0	502.0	553.0	595.0	572.0
8420 Leistungselektronik (5)				3'720.0	330.0	330.0	330.0	330.0	330.0	330.0	290.0	290.0	290.0	290.0	290.0	290.0
8430 Magnete (5)				4'992.0	432.0	432.0	432.0	432.0	432.0	432.0	400.0	400.0	400.0	400.0	400.0	400.0
8440 Vakuum (5)				5'088.0	424.0	424.0	424.0	424.0	424.0	424.0	424.0	424.0	424.0	424.0	424.0	424.0

Resource table = data master for reporting
(Use 'Sync' to get data from TPG Scheduler)

TPG Scheduler

Search

Save Save & Close Deactivate Refresh Check Access Process Flow Update Estimates

SLS 2.0 - Saved Project

Generic Project Active for 9 days

P0 - Preparation (9 D) P1 - Concept Initia

Resource planning via TPG Scheduler

Method 2

Created Project State Green Overall KPI 0 % Complete

Completed

Details Overview PBS Schedule Cost Plan Resource Plan Risks Changes Status Update Reports Roles & Permissions Actions

All Resource Plans for Project

Select year 2022 2023 2024 2025

Sync New row Duplicate row(s) Delete row(s) Refresh

Org Unit	Resource Name	Phase / Task	Year	Total (days)	Jan	Feb	Mar	Apr	May	Jun	Jul	Aug	Sep	Oct	Nov	Dec
8010 Planungsbüro (5)				696.0	58.0	58.0	58.0	58.0	58.0	58.0	58.0	58.0	58.0	58.0	58.0	58.0
8110 Operation (5)				3'972.0	328.0	328.0	328.0	318.0	318.0	318.0	318.0	318.0	318.0	360.0	360.0	360.0
8120 Elektronenanlagen (5)				5'814.0	478.0	478.0	478.0	478.0	478.0	478.0	478.0	478.0	478.0	504.0	504.0	504.0
8130 Protonenanlagen (5)				0.0												
8140 Targetanlagen, Strahllinien und Simulat. (5)				402.0	40.0	40.0	40.0	32.0	32.0	32.0	32.0	32.0	32.0	30.0	30.0	30.0
8210 Kontrollsysteme (5)				16'908.0	1'40...	1'40...	1'40...	1'40...	1'40...	1'40...	1'40...	1'40...	1'40...	1'40...	1'40...	1'40...
8210 Kontrollsysteme (5)				16'908.0	1'40...	1'40...	1'40...	1'40...	1'40...	1'40...	1'40...	1'40...	1'40...	1'40...	1'40...	1'40...
8210 Kontrollsysteme	8210 Kontrollsysteme		2023	3'122.4	260.2	260.2	260.2	260.2	260.2	260.2	260.2	260.2	260.2	260.2	260.2	260.2
8210 Kontrollsysteme	8210 Kontrollsysteme		2024	3'994.8	332.9	332.9	332.9	332.9	332.9	332.9	332.9	332.9	332.9	332.9	332.9	332.9
8210 Kontrollsysteme	8210 Kontrollsysteme		2025	3'430.8	285.9	285.9	285.9	285.9	285.9	285.9	285.9	285.9	285.9	285.9	285.9	285.9
8210 Kontrollsysteme	8210 Kontrollsysteme		2026	3'210.0	267.5	267.5	267.5	267.5	267.5	267.5	267.5	267.5	267.5	267.5	267.5	267.5
8210 Kontrollsysteme	8210 Kontrollsysteme		2027	3'150.0	262.5	262.5	262.5	262.5	262.5	262.5	262.5	262.5	262.5	262.5	262.5	262.5
8220 Elektronik (5)				13'242.0	1'142.0	1'142.0	1'142.0	1'120.0	1'120.0	1'120.0	1'096.0	1'096.0	1'096.0	1'056.0	1'056.0	1'056.0
8230 Messsysteme und Synchronisation (5)				4'358.4	363.2	363.2	363.2	363.2	363.2	363.2	363.2	363.2	363.2	363.2	363.2	363.2
8310 Entwicklung und Konstruktion (5)				2'688.0	272.0	272.0	272.0	224.0	224.0	224.0	224.0	224.0	224.0	176.0	176.0	176.0
8320 Produktionstechnik (5)				2'154.0	198.0	198.0	198.0	180.0	180.0	180.0	180.0	180.0	180.0	160.0	160.0	160.0
8330 Montagetechnik (5)				5'952.0	516.0	516.0	516.0	508.8	508.8	508.8	482.4	482.4	482.4	476.8	476.8	476.8
8340 Areal- und Projektkoordination (5)																
8410 Hochfrequenz (6)																
8420 Leistungselektronik (5)																
8430 Magnete (5)																
8440 Vakuum (5)																

Resource table = data master for reporting
(Use 'Sync' to get data from TPG Scheduler)

- Home
- Recent
- Pinned
- Start
- Dashboard
- My Work
- My Actions
- My Project Requests
- My Approvals
- Projects
- Portfolios
- Programs
- Resources
- Resource Plans
- Resources
- Contacts
- Reports PSI
- Portfolio
- Project
- Resource
- Reports TPG
- Portfolio
- Project
- Resource

ZPT-CT3-Ersatz - Saved
Project

Generic Project
Active for 23 days

P0 - Preparation (23 D) P1 - Concept Init

Resource planning via TPG Scheduler

Created Project State Green Overall KPI 77 % Complete

Completed

Details Overview PBS Schedule Cost Plan **Resource Plan** Risks Changes Status Update Reports Roles & Permissions Actions

Method 2

All Resource Plans for Project

Select year 2022 2023 2024 2025

Org Unit	Resource Name	Phase / Task	Year	Total (days)	Jan	Feb	Mar	Apr	May	Jun	Jul	Aug	Sep	Oct	Nov	Dec
> 1700 Zentrum für Protonentherapie (5)				0.0										0.0	0.0	0.0
> 1713 RTT (2)				40.0									16.4	23.6		
> 1723 Dosimetrie und Imaging (7)				52.5		4.4	10.3	4.8	0.0				0.0	2.0	21.3	9.7
> 8331 Hallendienst (1)				9.0								5.9	3.1			
> 8331 Hallendienst (1)				9.0								5.9	3.1			
8331 Hallendienst	8331 Hallendienst	dismantling old CT and Fluck-Liege	2023	9.0								5.9	3.1			
> 9131 Einkauf (1)				0.0					0.0							
> 9210 Immobilien (6)				70.4	4.3	8.7	14.6	9.1	0.6				9.5		1.7	21.9
> 9332 Elektroanlagen 2 (7)				99.3	11.4	15.7	4.3	4.3	0.6				47.0		1.1	14.9
> 9350 Gebäudetechnik (6)				63.6	11.4	15.7	4.3	4.3	0.6				17.0		0.7	9.6
> 9621 Überwachungssysteme (1)				18.5	7.1	11.4										

Linkage to phase/task

Resource table = data master for reporting
(Use 'Sync' to get data from TPG Scheduler)

TPG Scheduler

Search

Save Save & Close Deactivate Refresh Check Access Process Flow Update Estimates

Share

Created Project State Green Overall KPI 77 % Complete

Completed

optional: Structuring via Project Breakdown Structure (PBS)

ZPT-CT3-Ersatz - Saved Project

Generic Project Active for 23 days

P0 - Preparation (23 D) P1 - Concept Init...

Details Overview **PBS** Schedule Cost Plan Resource Plan Risks Changes Status Update

+ Add Edit Delete

#	i	Name	% Co...	Start	Finish	Duration	Predecessors	Assigned Reso...	PBS	PSP-Code	Key Milestone	Effort	WBS	2022	2023
1		P0 Preparation / WTO tender	100	01.11.22	16.11.22	12 days						96 hours	1	Okt 2022	Project start
2		project idea development	100	01.11.22	16.11.22	12 days			SS	000000600035		96 hours	1.1		
3		Project approved	100	16.11.22	16.11.22	0 days	2		IP WC			0 hours	1.2		
4		P1 Concept Initialization / Budget	100	18.11.22	26.12.22	26 days	3					532 hours	2		
5		evaluation new CT (wto tender)	100	18.11.22	14.12.22	19 days	3		CZ			152 hours	2.1		
6		concept room refurbishment	100	29.11.22	26.12.22	19 days	5FF,75F		9L +1			380 hours	2.2		
7		budget approval	100	26.12.22	26.12.22	0 days			IP WC			0 hours	2.3		

WP1: WTO Evaluation

WP2: Technical Installation of

WP3: Clinical/user aspects of

WP4: Table/couches

WP5: CT3 integration in treat

ZPT-CT3-Ersatz - Saved Project

Generic Project Active for 23 days

P0 - Preparation (23 D) P1 - Concept Initialization P2 - Planning Design P3 - Execution Manufacturing Production

Details Overview **PBS** Schedule Cost Plan Resource Plan Risks Changes Status Update Reports Roles & Permissions Actions

PBS Element Name	PBS Code	PBS Element Name	PSP-Code	PBS Parent	Comment
WP1: WTO Evaluation	1	WP1: WTO Evaluation	000000600035		
WP2: Technical Installation of the new planning CT3	2	WP2: Technical Installation of the new plannin	000000600035		
WP3: Clinical/user aspects of CT3 replacement	3	WP3: Clinical/user aspects of CT3 replacem	000000600035		
WP4: Table/couches	4	WP4: Table/couches	000000600035		
WP5: CT3 integration in treatment planning system	5	WP5: CT3 integration in treatment planning s	000000600035		
WP6: Commissioning of CT3	6	WP6: Commissioning of CT3	000000600035		
WP7: BAG/QA	7	WP7: BAG/QA	000000600035		
WP8: Novel features	8	WP8: Novel features	000000600035		

Enterprise

- Home
- Recent
- Pinned
- Start
- Dashboard
- My Work
- My Actions
- My Project Requests
- My Approvals
- Projects
- Portfolios
- Programs
- Projects
- Resources
- Resource Plans
- Resources
- Contacts
- Reports PSI
- Portfolio
- Project
- Resource
- Reports TPG
- Portfolio
- Project
- Resource
- Enterprise

SLS 2.0 - Saved Project

Generic Project Active for 9 days

P0 - Preparation (9 D) P1 - Concept Initia

Created Project State Green Overall KPI 0 % Complete

Completed

Details Overview **PBS** Schedule Cost Plan Resource Plan Risks Changes Status Update Reports Roles & Permissions Actions

Project Breakdown Structure (PBS)

PBS Element Name	PBS Code	PBS Element Name	PSP-Code	PBS Parent	Comment
▼ SLS 2.0 (84)	1	SLS 2.0			
▼ SLS 2.0 Projekt Office (22)	1.1	SLS 2.0 Projekt Office	8.80002.001	SLS 2.0	
► SLS 2.0 Regie Manpower (17)	1.1.01	SLS 2.0 Regie Manpower	8.80002.001.01	SLS 2.0 Projekt Office	
SLS 2.0 Project fixed term contracts	1.1.02	SLS 2.0 Project fixed term contracts	8.80002.001.02	SLS 2.0 Projekt Office	
► SLS 2.0 Project Management 1 (2)	1.1.03	SLS 2.0 Project Management 1	8.80002.001.03	SLS 2.0 Projekt Office	
▼ SLS 2.0 Infrastructure & Logistics (13)	1.2	SLS 2.0 Infrastructure & Logistics	8.80002.002	SLS 2.0	
SLS 2.0 Civil Engineering	1.2.01	SLS 2.0 Civil Engineering	8.80002.002.01	SLS 2.0 Infrastructure & Logistics	
SLS 2.0 SPS/PLC Systems	1.2.02	SLS 2.0 SPS/PLC Systems	8.80002.002.02	SLS 2.0 Infrastructure & Logistics	
SLS 2.0 Electrical Installation	1.2.03	SLS 2.0 Electrical Installation	8.80002.002.03	SLS 2.0 Infrastructure & Logistics	
SLS 2.0 Building Infrastructure	1.2.04	SLS 2.0 Building Infrastructure	8.80002.002.04	SLS 2.0 Infrastructure & Logistics	
SLS 2.0 Cooling	1.2.05	SLS 2.0 Cooling	8.80002.002.05	SLS 2.0 Infrastructure & Logistics	
SLS 2.0 Cryogenics	1.2.06	SLS 2.0 Cryogenics	8.80002.002.06	SLS 2.0 Infrastructure & Logistics	
SLS 2.0 Radiation Protection	1.2.07	SLS 2.0 Radiation Protection	8.80002.002.07	SLS 2.0 Infrastructure & Logistics	
SLS 2.0 Safety	1.2.08	SLS 2.0 Safety	8.80002.002.08	SLS 2.0 Infrastructure & Logistics	
SLS 2.0 Manufacturing & Assembling	1.2.09	SLS 2.0 Manufacturing & Assembling	8.80002.002.09	SLS 2.0 Infrastructure & Logistics	
SLS 2.0 Alignment	1.2.10	SLS 2.0 Alignment	8.80002.002.10	SLS 2.0 Infrastructure & Logistics	
SLS 2.0 Technical Coordination Beamlines	1.2.11	SLS 2.0 Technical Coordination Beamlines	8.80002.002.11	SLS 2.0 Infrastructure & Logistics	
SLS 2.0 Technical Coord. & Logistics , Mach...	1.2.12	SLS 2.0 Technical Coord. & Logistics , Machine	8.80002.002.12	SLS 2.0 Infrastructure & Logistics	
SLS 2.0 I-TOMCAT Infrastructure	1.2.13	SLS 2.0 I-TOMCAT Infrastructure	8.80002.002.13	SLS 2.0 Infrastructure & Logistics	
▼ SLS 2.0 Controls & Science IT (7)	1.3	SLS 2.0 Controls & Science IT	8.80002.003	SLS 2.0	
SLS 2.0 Electronics and Controls AEK	1.3.01	SLS 2.0 Electronics and Controls AEK	8.80002.003.01	SLS 2.0 Controls & Science IT	
SLS 2.0 Network / IT-Infrastructure	1.3.02	SLS 2.0 Network / IT-Infrastructure	8.80002.003.02	SLS 2.0 Controls & Science IT	
SLS 2.0 Science IT	1.3.03	SLS 2.0 Science IT	8.80002.003.03	SLS 2.0 Controls & Science IT	

TPG Scheduler

Search

Save Save & Close Deactivate Refresh Check Access Process Flow Update Estimates

Home Recent Pinned Start Dashboard My Work My Actions My Project Requests My Approvals Projects Portfolios Programs Projects Resources Resource Plans Resources Contacts Reports PSI Portfolio Project Resource Reports TPG Portfolio Project Resource

Enterprise

Share

Created Project State Yellow Overall KPI 0 % Complete Completed

Cost planning via cost table

Generic Project Active for 14 days

P0 - Preparation (9 D) P1 - Concept Initia

Details Overview PBS Schedule **Cost Plan** Resource Plan Risks Changes Status Update Reports Roles & Permissions Actions

All Financials Select year 2022 2023 2024 2025

Cost Position

Cost Position	Cost Type	Year	Total (CHF)	Jan	Feb	Mar	Apr	May	Jun	Jul	Aug	Sep	Oct	Nov	Dec
> Vakuum Pumpen- und Steuerungserneuerung (10)			3'035'000	3'035'000											
> Speisegeräteerneuerung (7)			1'905'000	1'905'000											
Speisegeräteerneuerung	Forecast	2025	536'000	536'000											
Speisegeräteerneuerung	Forecast	2026	200'000	200'000											
Speisegeräteerneuerung	Forecast	2027	400'000	400'000											
Speisegeräteerneuerung	Forecast	2028	200'000	200'000											
Speisegeräteerneuerung	Forecast	2029	200'000	200'000											
Speisegeräteerneuerung	Forecast	2030	200'000	200'000											
Speisegeräteerneuerung	Forecast	2031	169'000	169'000											
> HF-Teststand (3)			3'260'000	3'260'000											
> FLATTOP System (6)			6'460'000	6'460'000											
> Elektronik Erneuerung (3)			860'000	860'000											
> Einbauten (5)			1'230'000	1'230'000											
> BPM Erneuerung (7)			2'400'000	2'400'000											
> 50 MHz Ringspeisung (8)			24'000'000	24'000'000											

Project Estimates

Progress 0 %

Total Budget ---

Total Forecast CHF 43'150'000

Total Actual ---

Total Effort (days) 10'392.00

TPG Scheduler

Search

Show Chart | New | Delete | Refresh | Visualize this view | Export to Excel | Email a Link | Flow | Show As

Home | Recent | Pinned | ePPM Implementieru... | Start | Dashboard | My Work | My Actions | My Project Requests | My Approvals | Projects | Portfolios | Programs | Projects | Resources | Resource Plans | Resources | Contacts | Reports PSI | Portfolio | Project | Resource | Reports TPG | Portfolio | Project | Resource | Enterprise

Active Portfolios

Portfolio Name ↑

PSI PPM BOARDS (12)

BIO

CPT (1)

CPT Research Projects

DIRK (1)

DIRK Strategic

ENE

GFA

LOG

NES

NUM

PSD

SCD

TOPIC PPM BOARDS (4)

BaSi-BaKo

EiKo-EiGo

Forschungskommission [FoKo]

IT Board

USER Portfolios (1)

My Personal Portfolio

Filters Filter by keyword

Portfolios for more structure

Portfolio Name ↑			
PSI PPM BOARDS (12)	41	Koschik Alexander	
BIO	0	Cicchetti Gregor	
CPT (1)	29	Veghini Dario Attilio	
CPT Research Projects	1	Veghini Dario Attilio	
DIRK (1)	3	Koschik Alexander	
DIRK Strategic	0	Koschik Alexander	
ENE	0	# Application User ePPM (Service)	
GFA	9	Luethy Markus	
LOG	0	Fiehn Markus	
NES	0	# Application User ePPM (Service)	
NUM	0	Keller Peter	
PSD	0	# Application User ePPM (Service)	
SCD	0	# Application User ePPM (Service)	

TPG Scheduler

PSI

Home Recent Pinned ePPM Implementieru... Start Dashboard My Work My Actions My Project Requests My Approvals Projects Portfolios Programs Projects Resources Resource Plans Resources Contacts Reports PSI Portfolio Project Resource Reports TPG Portfolio Project Resource

GFA - Saved Portfolio Details Overview

Projects in Portfolio

As Primary Portfolio

Project ID Project Name Progress Start Date Finish Date Project State

2023-1023	CHART II	0	01.01.19	01.01.19	Created
2023-1024	Demoprojekt GFA	0	01.01.25	03.04.29	Created
2022-1055	ePPM Implementierung Projekt	0	06.02.22	06.02.22	Created
2023-1019	GFA Betrieb ABT	0	01.01.23	29.12.23	Approved
2023-1017	GFA Betrieb AEK	0	01.01.23	29.12.23	Approved
2023-1018	GFA Betrieb AIK	0	01.01.23	29.12.23	Approved

DIRK - Saved Portfolio Details Overview **Projects** Reports Roles & Permissions

Projects in Portfolio

As Related

As Primary Portfolio

Project ID	Project Name	Progress	Start Date	Finish Date	Project State
2023-1020	IMPACT	0	01.01.21	31.12.30	Created
2023-1021	Porthos (Pre-Project)	0	01.01.22	31.12.28	Created
2023-1016	SLS 2.0	0	01.01.20	01.07.26	Created

Portfolios for more structure

- Home
- Recent
- Pinned
- Start
- Dashboard
- My Actions
- My Project Reque...
- My Approvals
- My Work
- Projects
- Portfolios
- Programs
- Projects
- Resources
- Resource Plans
- Resources
- Contacts
- Reports PSI
- Portfolio
- Project
- Resource
- Reports TPG
- Portfolio
- Project
- Resource
- Enterprise

Resource usage overview for line managers

Active Resource Plans

Select year 2022 2023 2024 2025

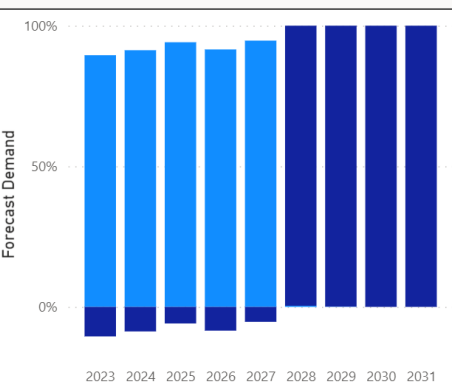
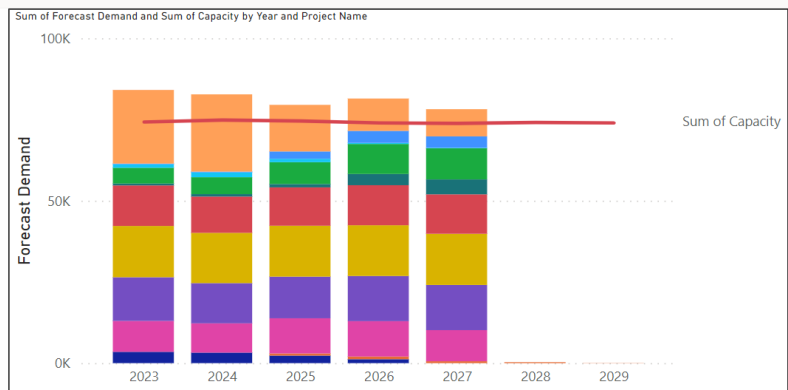
Org Unit Resource Name Project

Org Unit	P	R	Y	Total	Jan	Feb	Mar	Apr	May	Jun	Jul	Aug	Sep	Oct	Nov	Dec	Phase /
9361 Anlagenbau (1)				30											2	22	6
9371 SPS-Systeme (1)				80			5	3	0	0	0	4	21	22	22	3	
9500 Informationstechnologie (2)				318	27	27	27	27	27	27	27	27	27	27	27	27	
9501 Strategic IT Management (7)				422	43	38	37	31	34	34	34	34	34	34	36	34	30
Abt Björn Erik (1)				119	10	10	11	9	10	10	10	10	10	11	10	9	
Fiehn Markus (5)				197	24	20	16	14	15	15	15	15	15	16	15	14	
LOG Betrieb AIT (2)				131	11	11	12	10	11	11	11	11	11	12	11	10	
9501 Strategic IT Management	LOG	Fiehr	2023	108	9	9	10	8	9	9	9	9	9	10	9	9	950
9501 Strategic IT Management	LOG	Fiehr	2023	23	2	2	2	2	2	2	2	2	2	2	2	1	950
Workplace Concept Implementatio... (3)				67	13	10	4	4	4	4	4	4	4	4	4	4	
Meier Simon (1)				107	9	9	10	8	9	9	9	9	9	10	9	8	
9510 ICT Support (1)				161	14	13	15	12	14	14	14	14	14	15	14	12	
9511 IT Service Desk (3)				580	49	46	54	45	49	49	49	49	49	52	49	42	
9512 IT Onsite Support (6)				896	75	73	85	68	75	75	75	76	75	80	75	65	
9520 ICT Infrastructure Services (1)				94	8	7	10	6	8	8	8	8	8	8	8	7	
9523 Workplace and Multimedia Services (14)				123	9	10	12	13	13	13	13	16	7	0	9	9	
9524 ICT Network and Security Services (9)				904	77	73	83	68	77	77	77	77	77	82	77	64	
9540 ICT Application Services (4)				93	6	6	7	5	9	9	9	9	9	9	8	8	
9541 IT Application Management+Collabora... (5)				484	41	39	44	38	42	41	42	42	41	43	41	34	

Reports via PowerBI

- Home
- Recent
- Pinned
- Start
- Dashboard
- My Work
- My Actions
- My Project Requests
- My Approvals
- Projects
- Portfolios
- Programs
- Projects
- Resources
- Resource Plans
- Resources
- Contacts
- Reports PSI
- Portfolio
- Project
- Resource
- Reports TPG
- Portfolio
- Project
- Resource
- Enterprise

PowerBI Resource Report PSI



Resource

- BIO
- Direktion
- ENE
- Extern
- GFA
- LOG
- NES
- NUM
- PSD
- SCD

Filters

Search

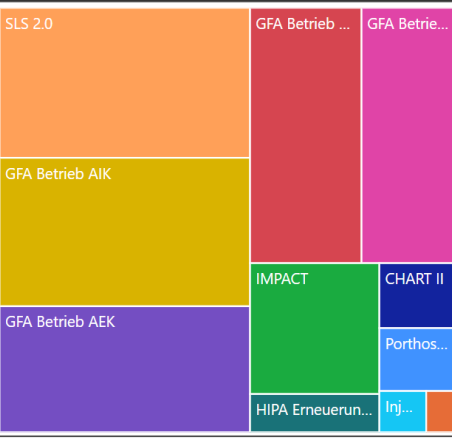
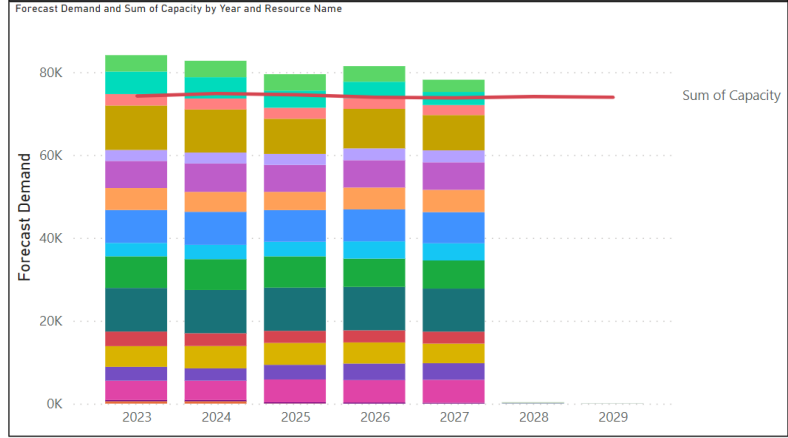
Filters on this visual

Department is (All) Resource Pool (Department)

Division is (All)

Group is (All)

Section is (All)



Portfolio Name: All

Project Owner: All

Auslastung total 2023

113

Auslastung durch Betrieb 2023

69

- **PM@PSI: Unify and improve project management** at PSI
- PM@PSI and ePPM platform (tool) in **pilot phase**
- Main ePPM functionality ready for use at PSI
- **Interested Pilot Users** contact:
 - Alexander Koschik
 - Markus Fiehn
- **Thanks for your attention**



Project team:

D.Veghini (PL), M.Fiehn, T.Eckert, P.Keller, R.Kobler, S.König, A.Koschik, M.Luethy

SteCo:

M.Seidel (Chair), P.Allenspach, F.Behner, G.Cicchetti, R.Peterhans

Additional consulting:

R.Geist, J.Kuster, PSI Bildungszentrum