

PAUL SCHERRER INSTITUT



WIR SCHAFFEN WISSEN – HEUTE FÜR MORGEN

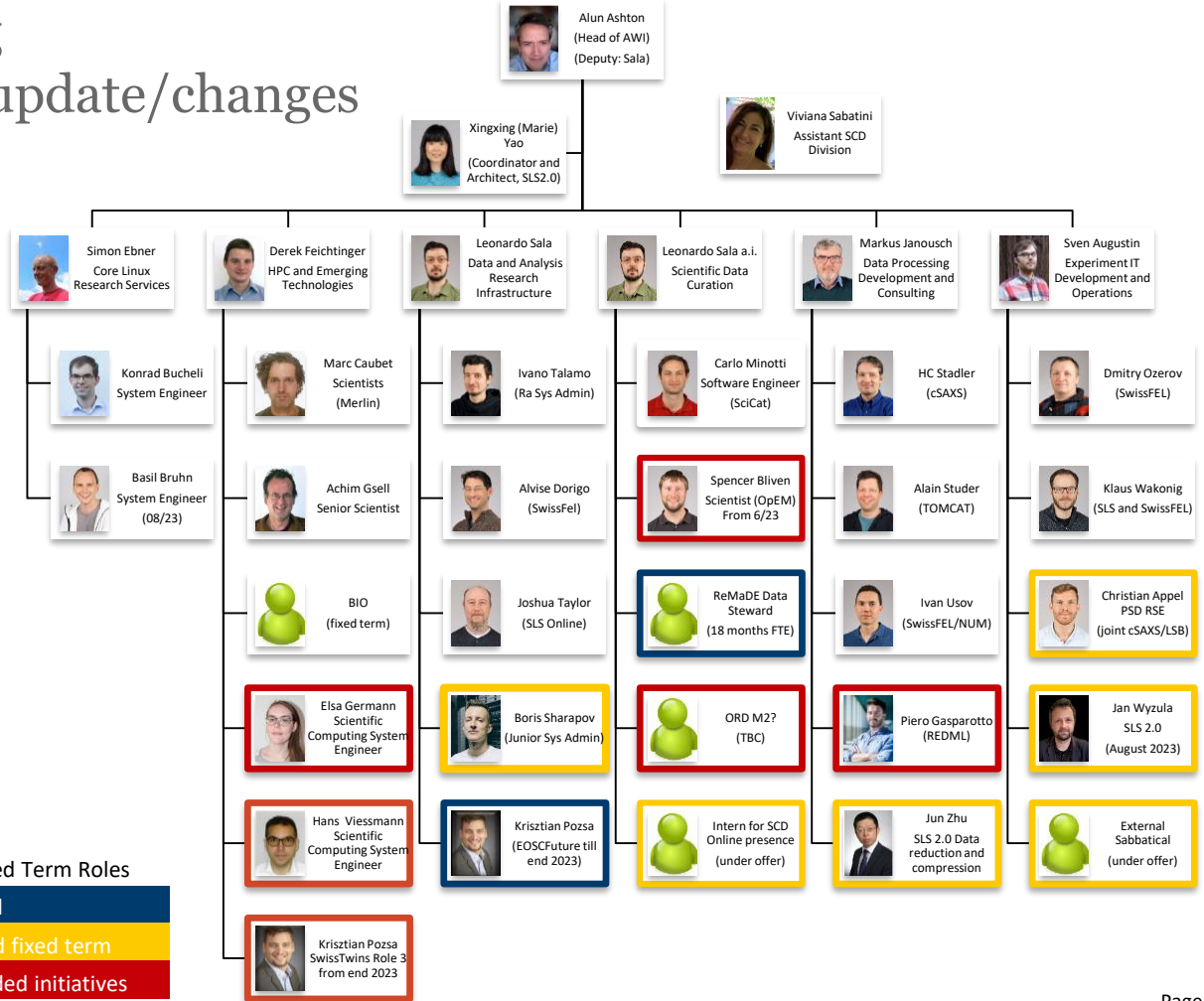
Alun Ashton :: Head of Science IT :: Paul Scherrer Institute

Information / Update AWI

IT Quartalsinfo / 29.08.2023

Staffing status/update/changes

- Recent:
 - Basil, Jan and Christian joined
 - Stephan has retired, Leo a.i.
- New
 - Leo officially dept Deputy.
 - Krisz will move sideways



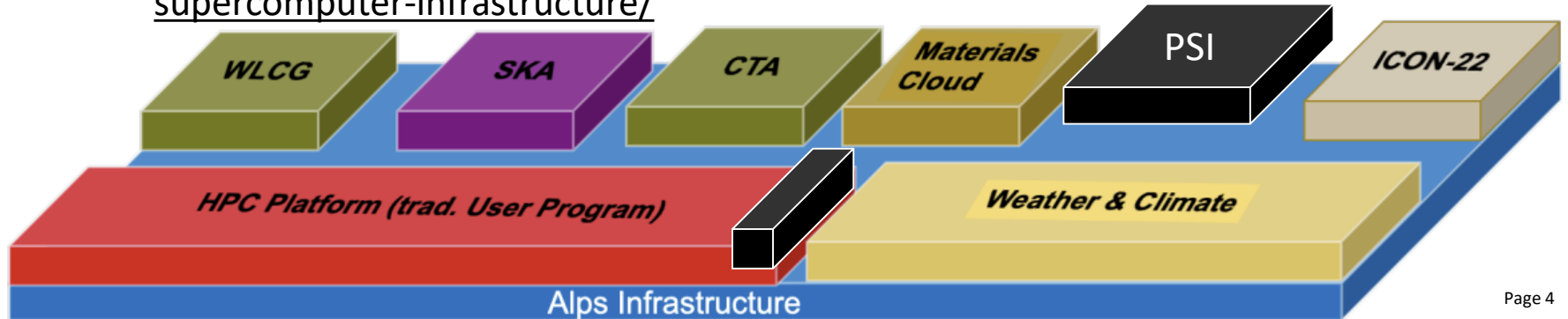
Relocation to OBBA in September

- Top floor of the dark tower in the East
- Hot desk scenario, 'rules' being discussed in a parallel meeting now

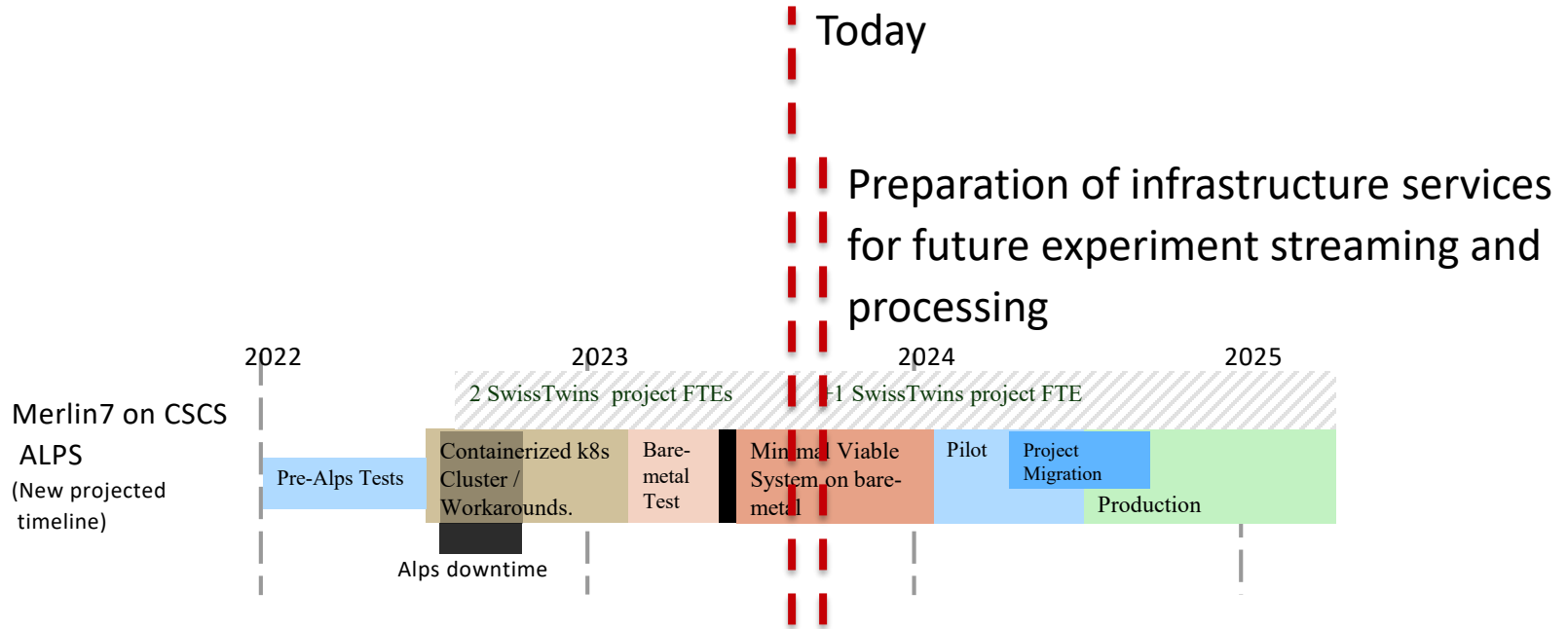


TransAlps and SwissTwins

- In the July DIRK a funding model and source were agreed for 2024 and 2025
- The new resources will give us approximately double the CPUs and 33% more storage at an annual cost of circa 1MCHF/yr
- Merlin6 main storage warranty extended till end of 2024 out of “an abundance of caution”
- Background Article in Technical Publication April 2023.
<https://www.hpcwire.com/2023/04/05/into-the-alps-what-exactly-is-the-new-swiss-supercomputer-infrastructure/>



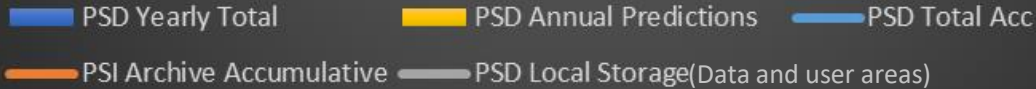
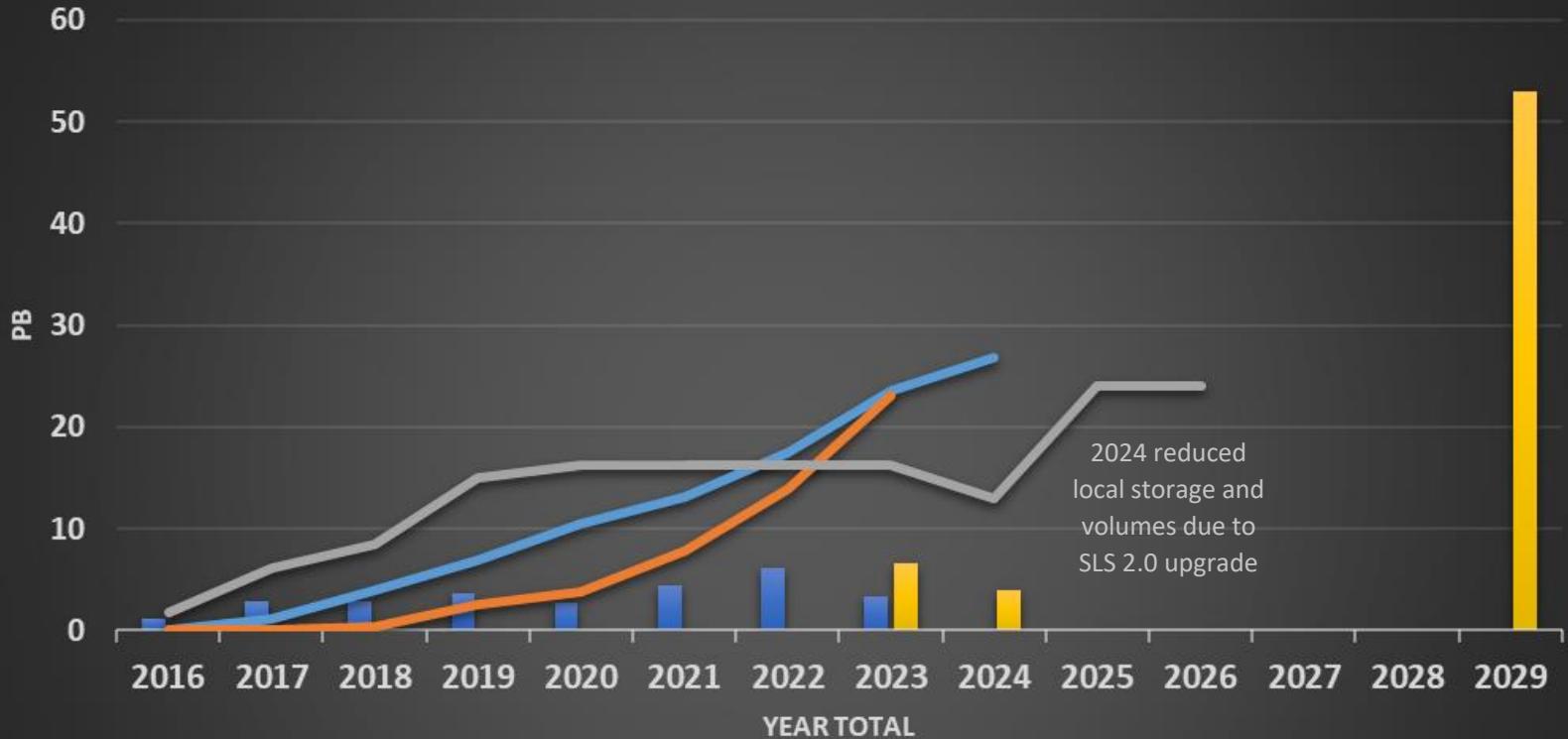
TranAlps project progress



- First version of status page online
- all k8s clusters updated to 1.26.3
- outcome from last international SciCat dev meeting hosted in UK:
 - focus on search functionalities
- Statistics from SciCat based on metabase
- new k8s cluster (infrastructure), dedicated to mongo backup
- Improved documentation
- Scaled backend (both SciCat and SciLog) to improve availability and response time
 - session persistency guaranteed by MongoDB

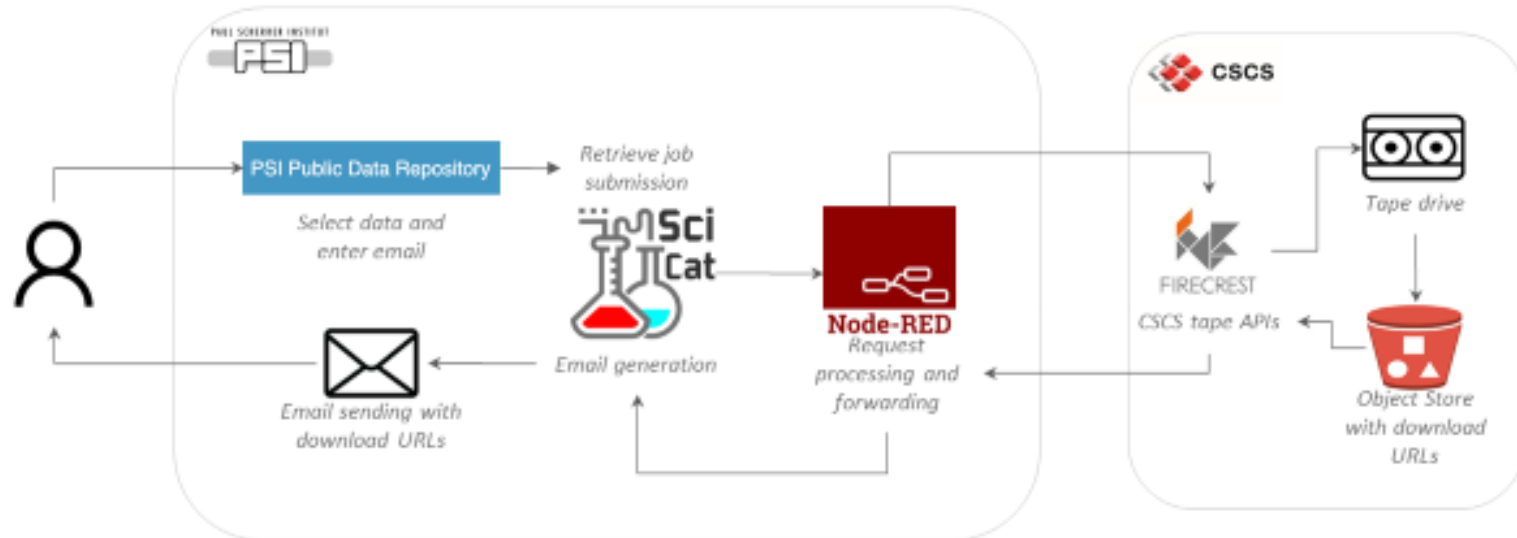


PSI data volumes progress....



Current recovery of data from PSI

- Manual process to get data requested and staged at PSI for processing or at CSCS for download (and processing in the future)



- Data is not currently automatically made public at end of embargo period.....

- <https://intranet.psi.ch/en/ord> PSI specific information (area still under development)
- <https://ethrat.ch/en/eth-domain/open-research-data/> ETH ORD program details
- <https://ethrat.ch/en/the-five-measures-in-details/>
 - Measure 1
 - Contribute (< 30k, regular calls)
 - Explore (< 150k one more call)
 - Establish (< 1.5M deadline passed)
 - Measures 2 – 5 specialised calls.
- Swiss universities parallel call open.
 - Similar scheme but different timeline

ORD: The five Measures in details

Measure 1: Calls for Field-Specific Actions



Measure 2: Coordination of Access to Research Data Management
(RDM) Services & Infrastructures



Measure 3: Development of Online Course Material for RDM Training



Measure 4: Information on Legal Questions related to ORD



Measure 5: Career Paths for ORD Professionals



Overall overview

43 projects so far:

- 28 Contribute (excluding project that withdrew)
- 13 Explore
- 2 Establish

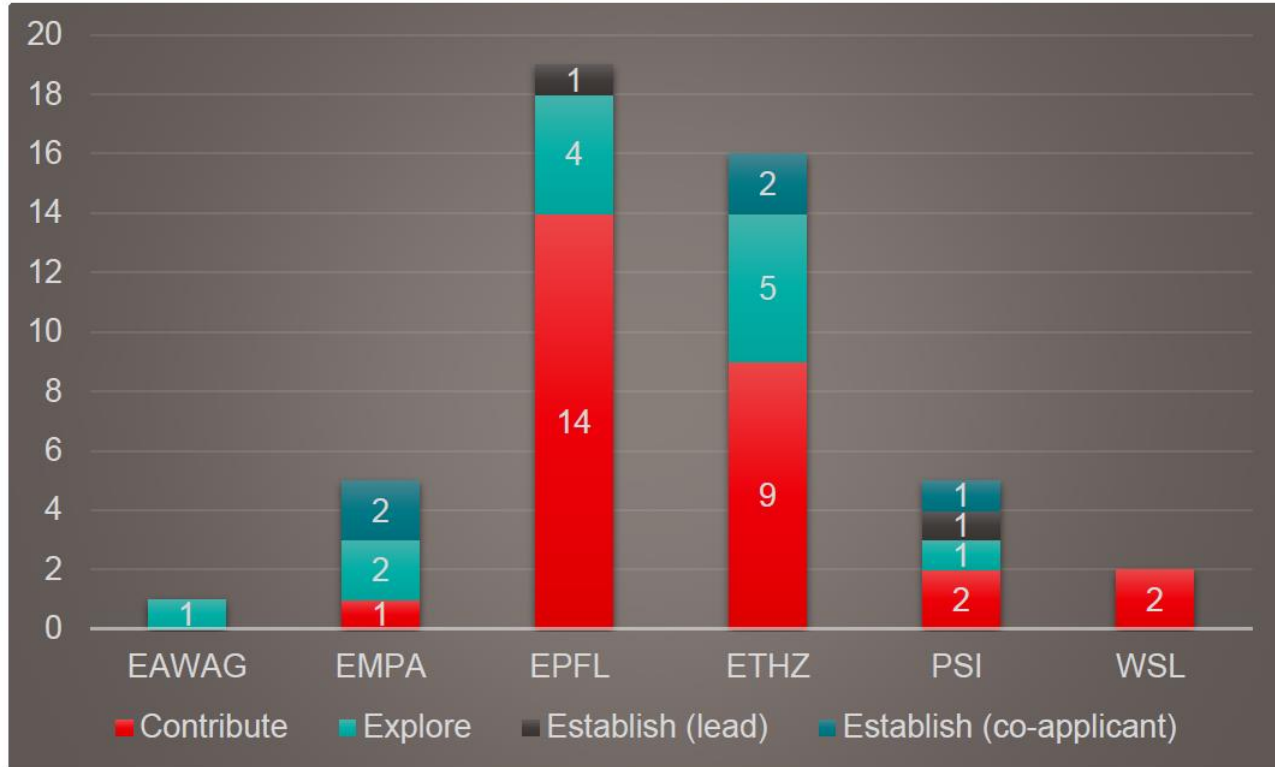
Estimated that around **additional 45-50 projects** to be selected in future calls

- Majority of projects have started **already or starting in September/October**
- Few Contribute projects being completed: final reporting



Overall: number of projects by institution

■ ETH Open Research Data (ORD) Program



Timeline: next deadlines



6th call Contribute: mid-December 2023

2nd call Explore: February 2024

7th call Contribute: mid-April 2024

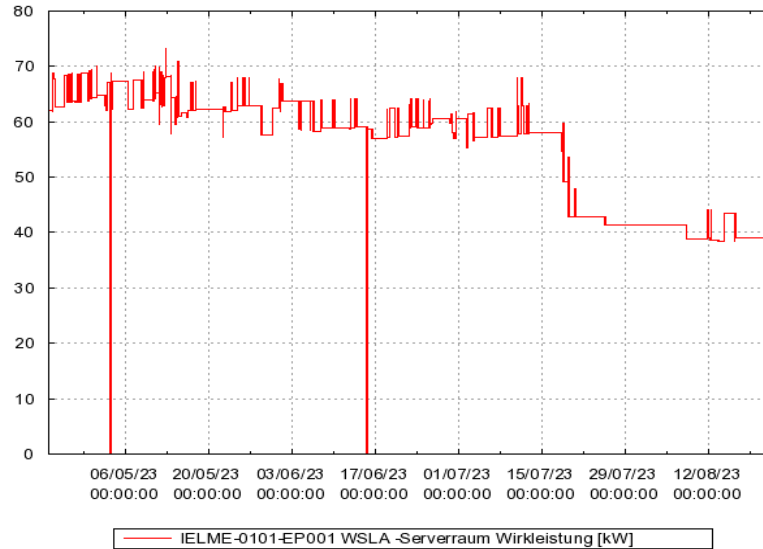
8th call Contribute: early September 2024

End date all projects (without no cost-extensions): **By summer 2026**

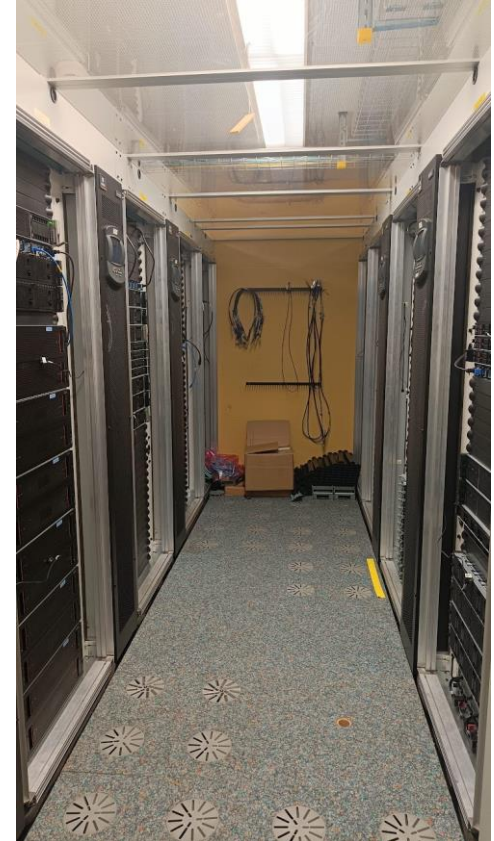


SLS Server room migration to WHGA progress

- RA migration fully underway



- As preparation for SLS2 tests and operations, 72 single mode fibers (that translates into 36 network connections) between WSLB and WHGA have been laid down in July.
- Several services also further tested e.g. data acquisition tests from SLS direct to WHGA servers and storage.



- SLS User Beam ends 25th of September, shutdown on 30th of September
- PSIM on 15th of September for general information update

- Beamlines are intensively collecting data before the start of dark time
 - Especially the Debye and PXIII new/upgraded beamlines

—

New access rules to SLS during DT

- During dark time whole SLS building special regulation (Exception Passerelle and offices/floor at offices)
 - Extra “Sicherheitsbelehrung” to be signed
 - Some details need to be refined
 - Extra “Helmpflicht” below crane
 - Extra “aktiven medizinischen Implantaten“ gesperrt. Permanent magnets
- New controlled zones on the floor for equipment from the tunnel
- During commission (starting End Dec 2024) whole SLS building controlled zone
 - Meeting rooms not PSI wide bookable (to be done)
 - Also offices need dosimeter
- Installation work of heavy equipment (all tunnel work, larger installation at beamlines, not referring to use of equipment at the beamlines)
 - Not alone
 - During regular working hours (7:00 – 17:00), or info via DAM Meeting

credits:
Frithjof