

PAUL SCHERRER INSTITUT



WIR SCHAFFEN WISSEN – HEUTE FÜR MORGEN

Alun

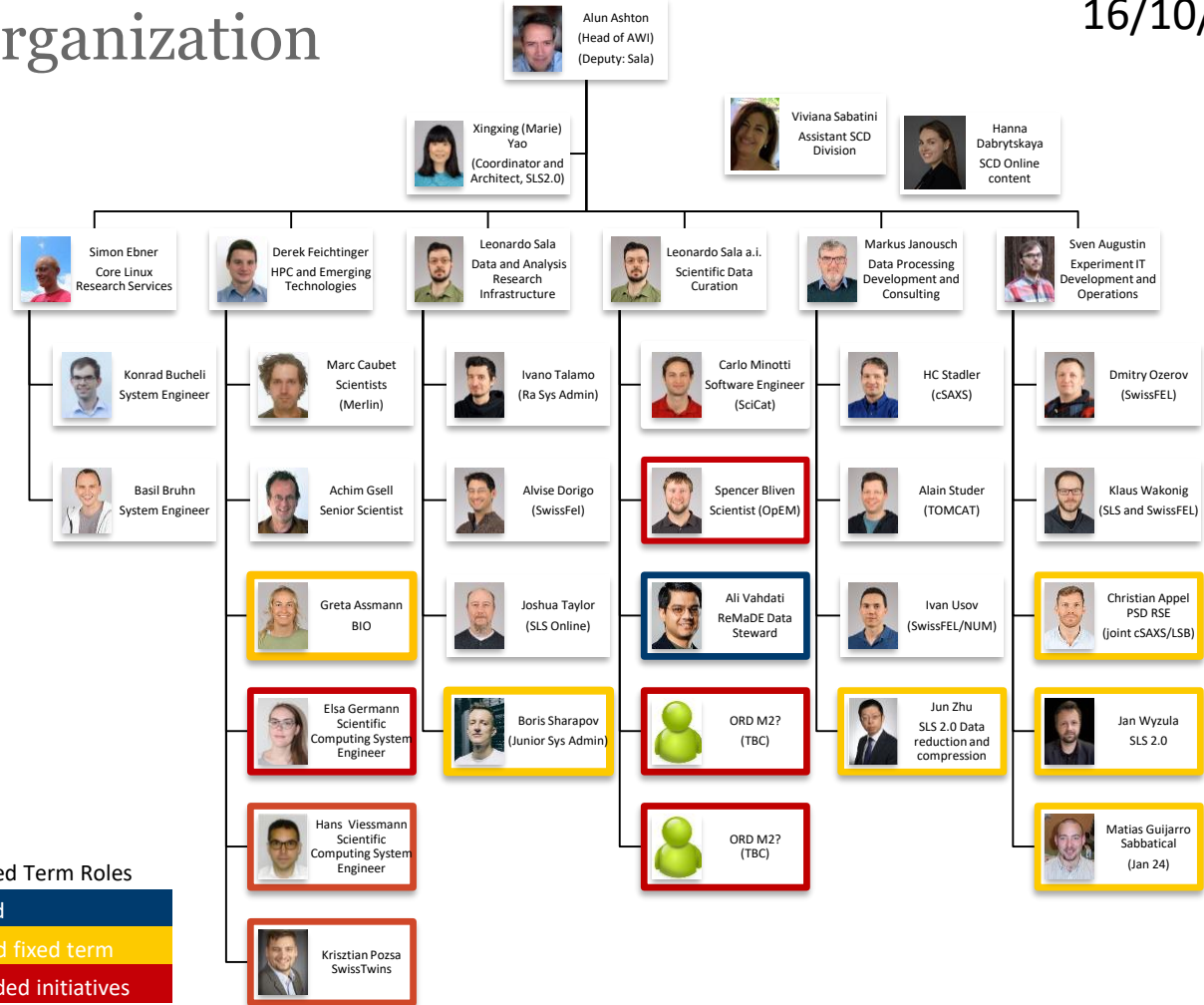
# AWI Department Update

Online 16/10/23

# Today's Agenda

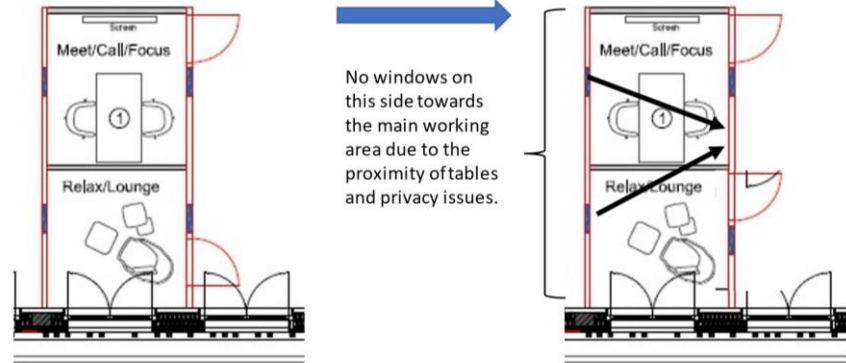
- (presenters present from your own zoom session.)
- Update from
  - 7900 Alun
  - 7901 Sven
  - 7902 Markus
  - 7903 Leo
  - 7903 Leo
  - 7905 Derek
  - 7906 Simon

- Roles delta summary:
  - 7901
  - Matias starts Jan



# Office move

- Still awaiting information or delivery on various aspects including missing chairs, coffee table, lockers,.....
- Water, water everywhere but not a drop to drink....
  - Potential change in supplier in the summer could mean a new/replacement system
- Walls for last meeting rooms in January (2024?)



# Installation of new VC equipment.

- Zur Info.
    - Nächste Woche vom 12-14.12 werden die Räume installiert.
    - Bitte informiert intern das die Räume für die Techniker zugänglich sind.
    - Danke.
  - Auftragsnummer    Raum                                      Kommission
  - AB1333              OBBA 113                                      Umbau MTR on Android / Windows
  - AB1331              OBBA 206 OBBA 206                      Projektraum
  - AB1298              OBBA 212/213                              OBBA OG2 - 2x MTRoW
- 
- Training details sent

# Unacceptable office behaviour...



# Confluence: <https://psich.atlassian.net/wiki/>

The screenshot shows a Confluence page within the 'Scientific Computing, Theory and Data' space. The left sidebar displays a navigation tree with 'Meeting notes in space' and a 'CONTENT' section. The main content area shows the page title, ownership information (Leonardo Sala), a date of 5 Dec 2023, and sections for Participants (@Leonardo Sala), Goals, and Discussion topics. A table with columns for Time, Item, Presenter, and Notes is partially visible at the bottom.

Scientific Computing, Theory and Data

Meeting notes in space

CONTENT

Filter by title

- AWI - Science IT, Infrastructure and Ser...
  - Core Linux Research Services
  - HPC and Emerging Technologies
  - Data and Analysis Research Infrastruc...
  - Scientific Data Curation
  - Data Processing Development and C...
- Meeting Notes (Science IT, Infrastruc...
  - 2023-11-30 Meeting notes
  - 2023-12-05 Meeting notes
- INTERNAL AWI
  - AWI Leadership Team
    - Meetings
      - 2023-12-05 AWI Leadership mee...
      - 2023-12-07 AWI Leadership mee...

## Invitation to participate and share: Upcoming Research Software Engineering (RSE) Event



Chadha Tarun (ID) &lt;tarun@ethz.ch&gt;

To Ashton Alun



Wed 29/11/2023 18:53

If there are problems with how this message is displayed, click here to view it in a web browser.

Dear Dr. Ashton,

We are Data Scientists and Software Engineers working at the [Scientific IT Services](#) of ETH Zurich and are writing to inform you about an upcoming online event, on the "Research Software Engineering (RSE) Movement" with Prof. Simon Hettrick, to be held on the **12th of December from 16:00 to 17:30 on Zoom at <https://ethz.zoom.us/j/63761211087>**.

This event is designed to bring together researchers, software engineers, and enthusiasts from various disciplines to explore the evolving role of software development in research.

The event is divided into two parts, one aimed at a wider audience and the other at ETH Zurich specific institutional objectives.

**Part 1: Introduction to Research Software Engineering (RSE) (16:00-17:00)**

- This section is intended for a general audience and will cover foundational aspects of RSE.
- Keynote speech by Prof. Simon Hettrick from the [Software Sustainability Institute](#).
- Interactive Q & A session.
- Open to participants from all institutions.

**Part 2: RSE at ETH Zurich (17:00-17:30)**

- Tailored specifically for members of ETH Zurich.
- Discussions on the development of our RSE community and collaborative opportunities within our institution.

With this event, we are taking the first step towards establishing a robust RSE community at ETH Zurich and potentially collaborating with Swiss academic institutions to jointly create a Swiss-wide RSE community.

We kindly request that you share this information with your group members. Your support in encouraging their participation would be greatly appreciated and would significantly contribute to the success of the event.

If you or any of your group members have any questions or need further information, please do not hesitate to contact us by email. We are excited about the potential of this event and look forward to the possibility of your group's involvement.

If you plan to attend, we would appreciate **quick feedback by replying to this email**.

Thank you for your time and consideration.

With best regards,

Franziska Oschmann, Uwe Schmitt, Tarun Chadha



## Proposed Measure 2 API Projects – Details

### 1. Improving interoperability of ELNs and data repositories by enhancing API integration – ELN2Repo

- **Summary:** improve integration between ELN systems and data repositories in the ETH Domain, by implementing open API-based interfaces between the SciCat data repository and three important ELNs in the ETH Domain (SciLog, openBIS, Heidi)
- **Partners:** PSI AWI, ETHZ ID SIS, Empa Science IT
- **Start date & duration:** ca. Q2-2024 for 2.5 years / **Budget:** CHF 700'000

### 2. Towards a common storage access API – CSAA

- **Summary:** define and establish a common agreed Storage Access API for ETH domain data repositories, and enable them on selected services (PSI SciCat Data Catalog, ETHZ Long-Term Storage (LTS), WSL EnviDat)
- **Partners:** PSI AWI, WSL EnviDat, CSCS, ETHZ ID Infra, Empa Science IT
- **Start date & duration:** ca. Q3-2024 for 2 years / **Budget:** CHF 892'837

## Proposed Measure 2 API Projects – Details

### 3. Interoperability between the ETH Domain Repositories – IntER

- **Summary:** Define and implement a blueprint for metadata interoperability between data catalogues and repositories in the ETH Domain; Address compliance with national and international metadata standards relevant to ETH Domain repositories; Improve links between datasets and scientific publications; Connect involved repositories with each other and with central search portals
- **Involved solutions:** Lib4RI DORA incl. Search tool; WSL EnviDat, PSI SciCat & MaterialsCloud archive
- **Partners:** Eawag/Lib4RI, PSI AWI, PSI LMS, WSL EnviDat
- **Start date & duration:** ca. Q3-2024 for 2 years / **Budget:** CHF 480'000

### 4. Reproducibility and Interoperability in Active Data Publication – RI-ADP

- **Summary:** Improve interoperability between data repositories and processing & analysis systems to enhance discoverability and reusability of ORD; Integration between Renku platform and different ETH Domain repositories; Standardized interfaces for authentication, data and metadata exchange to ensure portability of developed solutions to other systems
- **Involved solutions:** SDSC Renkulab; WSL EnviDat, PSI SciCat, ETHZ Research Collection
- **Partners:** ETHZ/EPFL SDSC, WSL EnviDat, PSI AWI
- **Start date & duration:** ca. Q3-2024 for 2 years / **Budget:** CHF 545'000

