



Rasmus Ischebeck

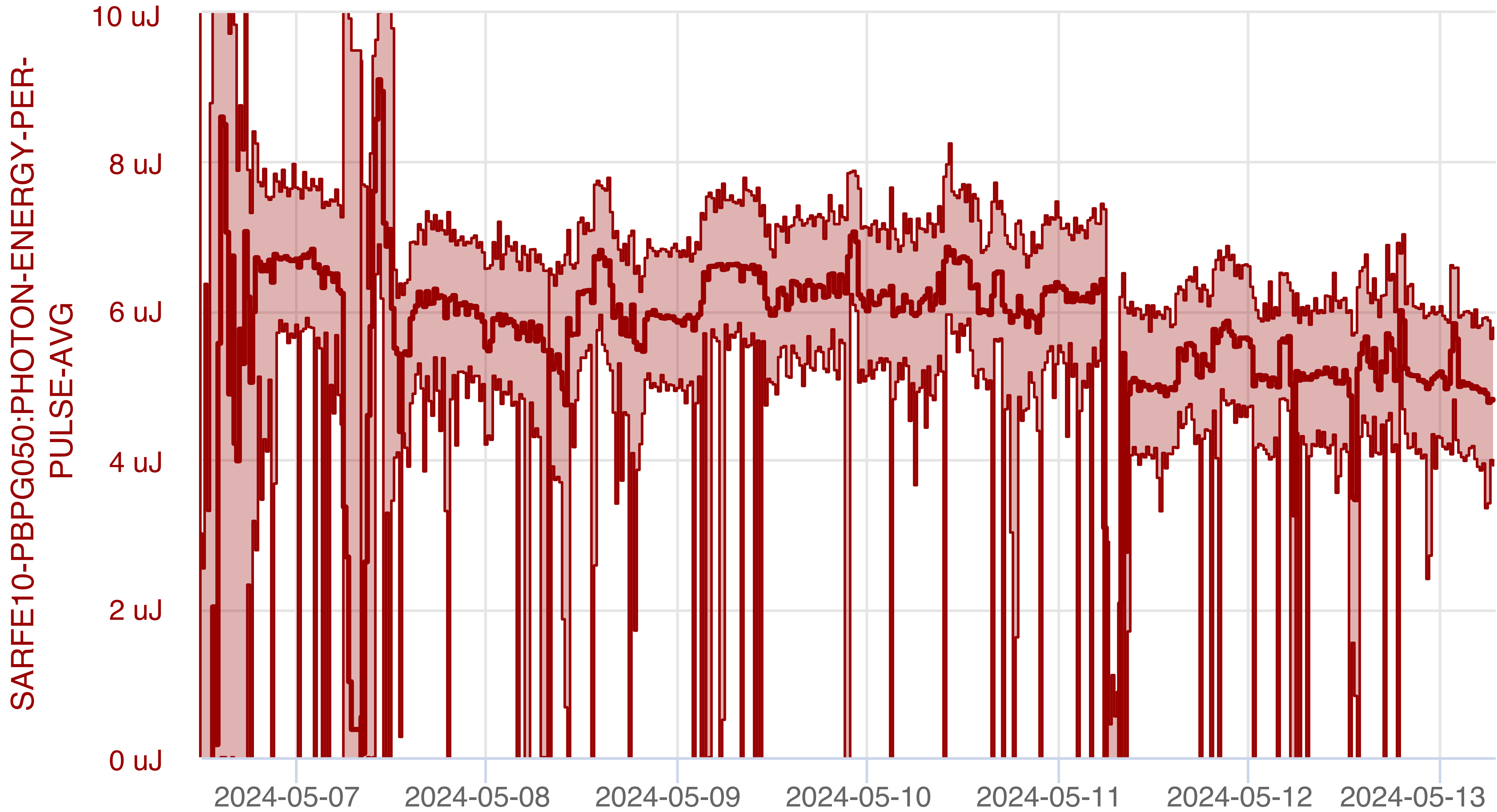
SwissFEL RUN COORDINATOR REPORT

WEEK 19, 2024

- ▶ Aramis:
 - ▶ 10 pC mode with single-spike operation for Cristallina
- ▶ Athos:
 - ▶ Machine development
 - ▶ Maloia operation
- ▶ Feedback on compression from monitor in the energy collimator chicane
- ▶ Good stability during the week, some drifts during the weekend

ARAMIS PERFORMANCE

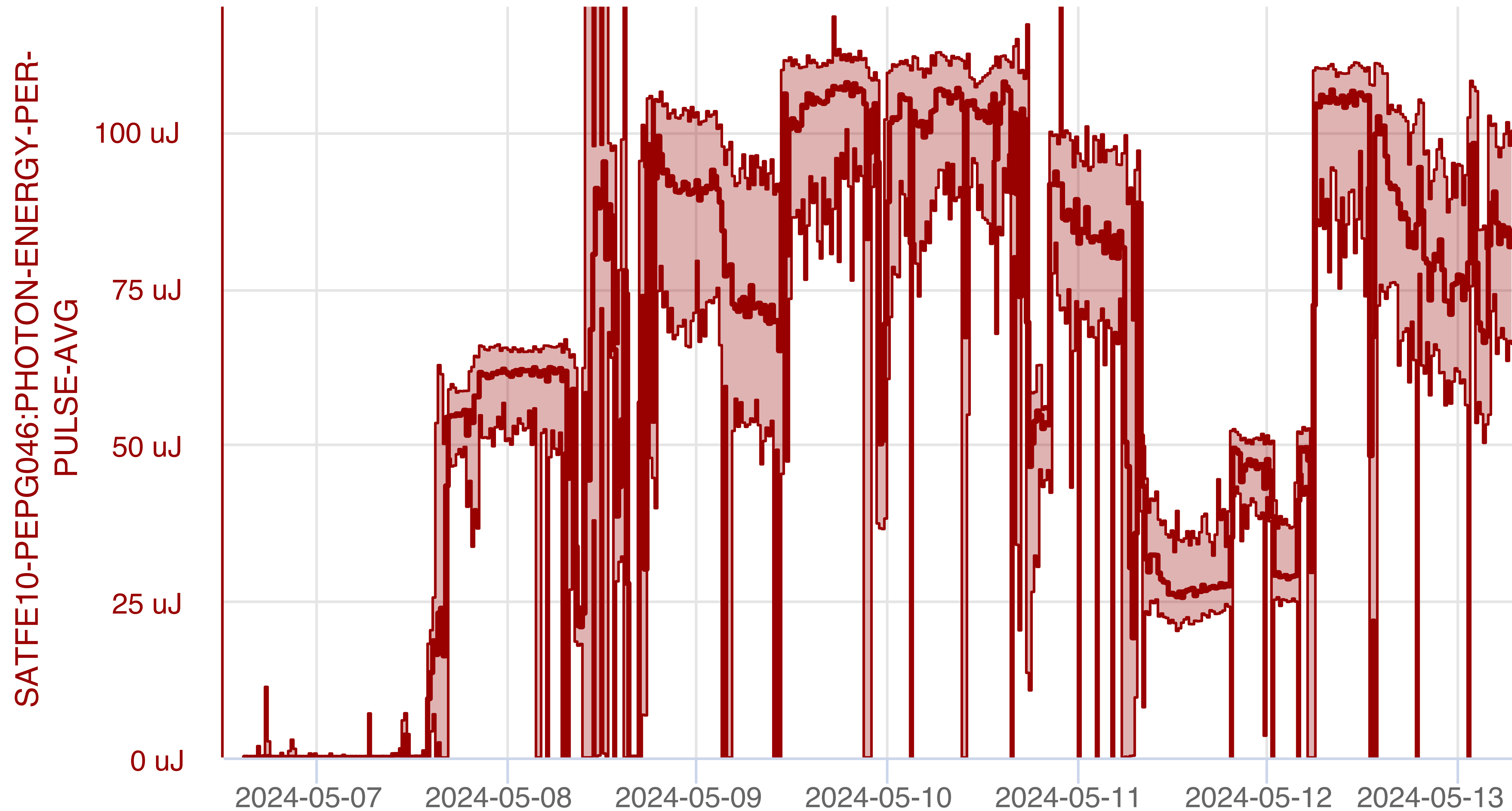
Data retrieved 2024-05-13 11:23:04.463



● SARFE10-PBPG050:PHOTON-ENERGY-PER-PULSE-AVG

ATHOS PERFORMANCE

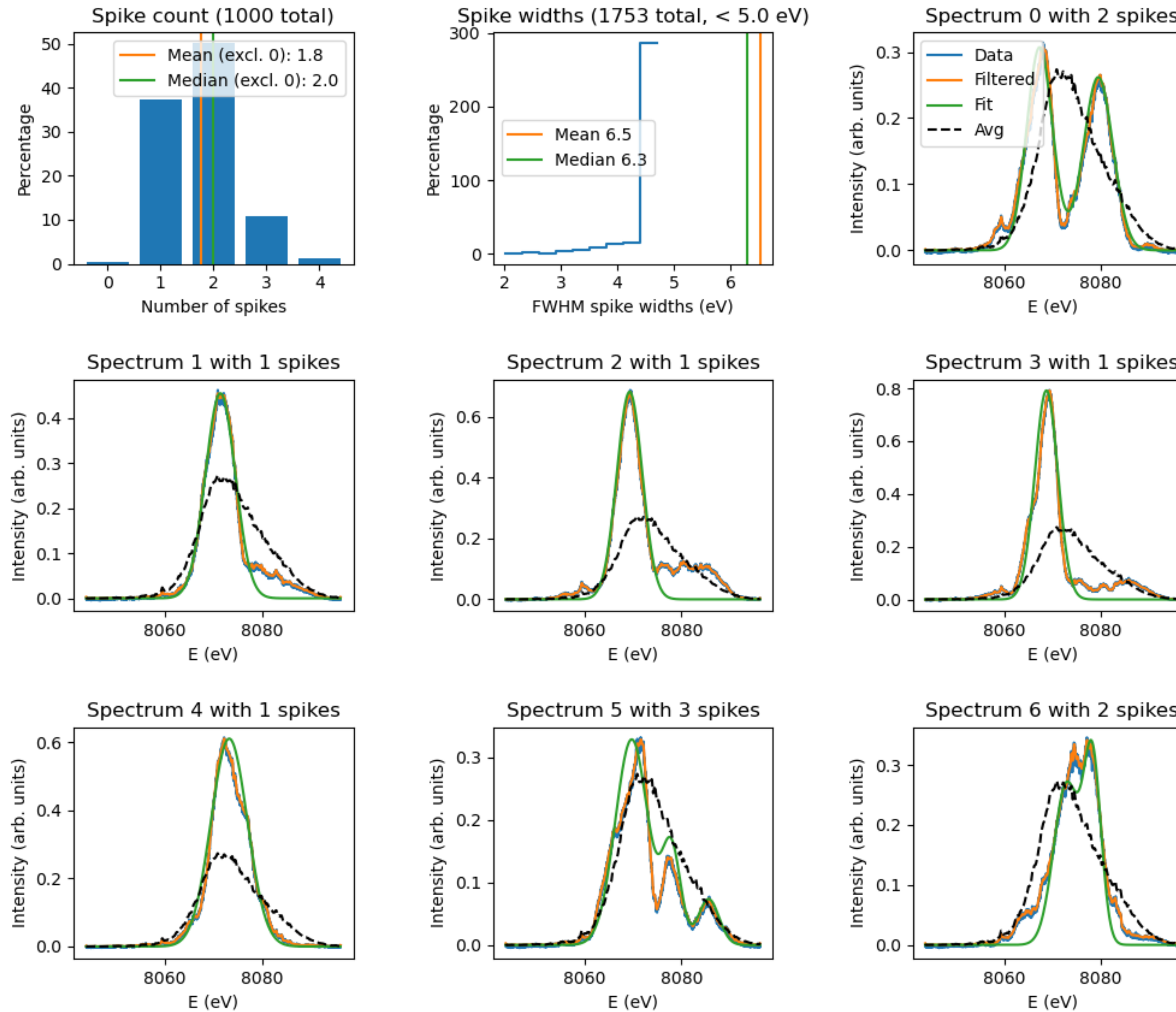
Data retrieved 2024-05-13 11:27:42.315



● SATFE10-PEPG046:PHOTON-ENERGY-PER-PULSE-AVG

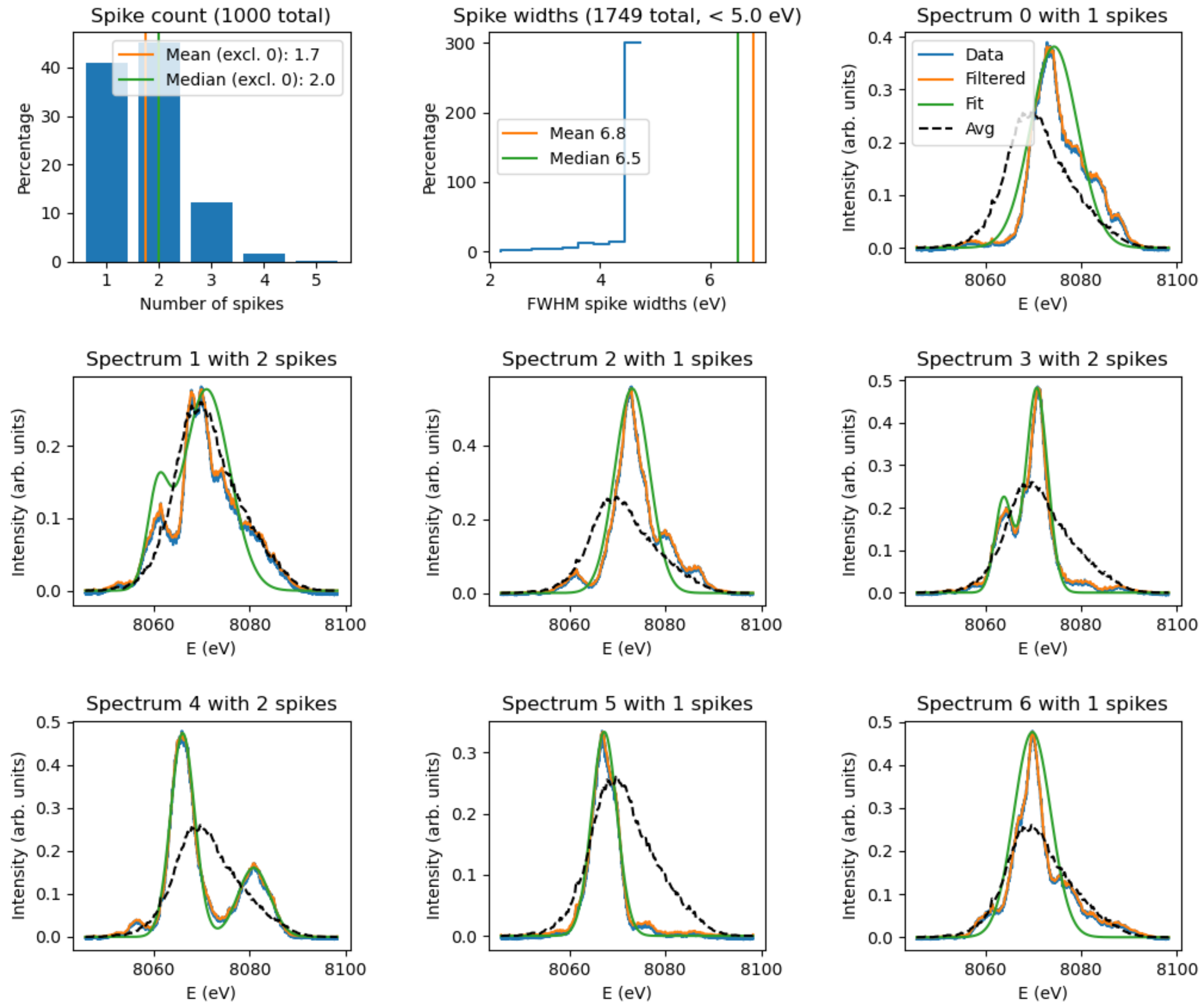
BEFORE OPTIMIZATION

Main results for psss_spectra_20240507_163842.h5



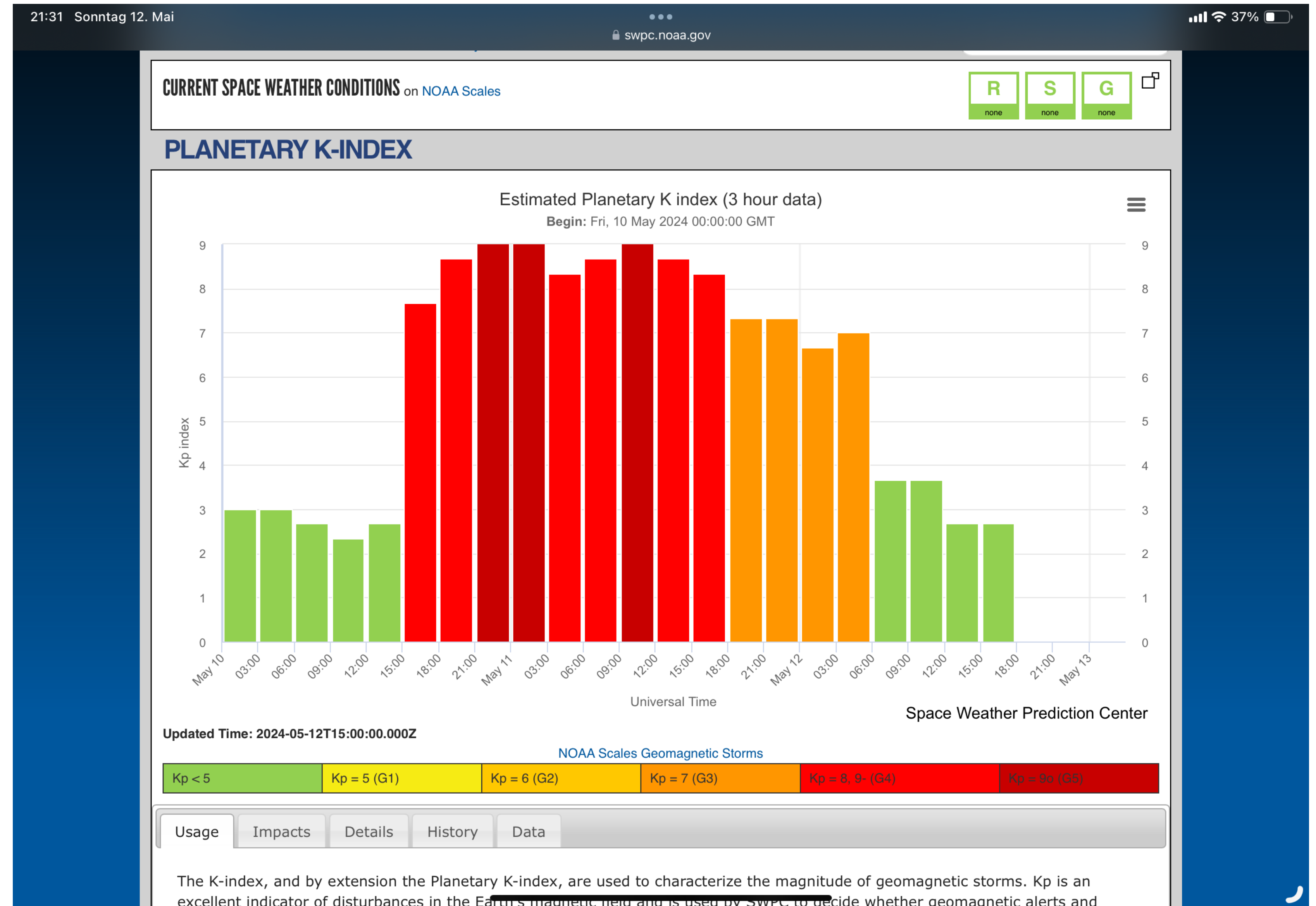
SINGLE-SPIKE OPERATION

Main results for psss_spectra_20240509_105337.h5



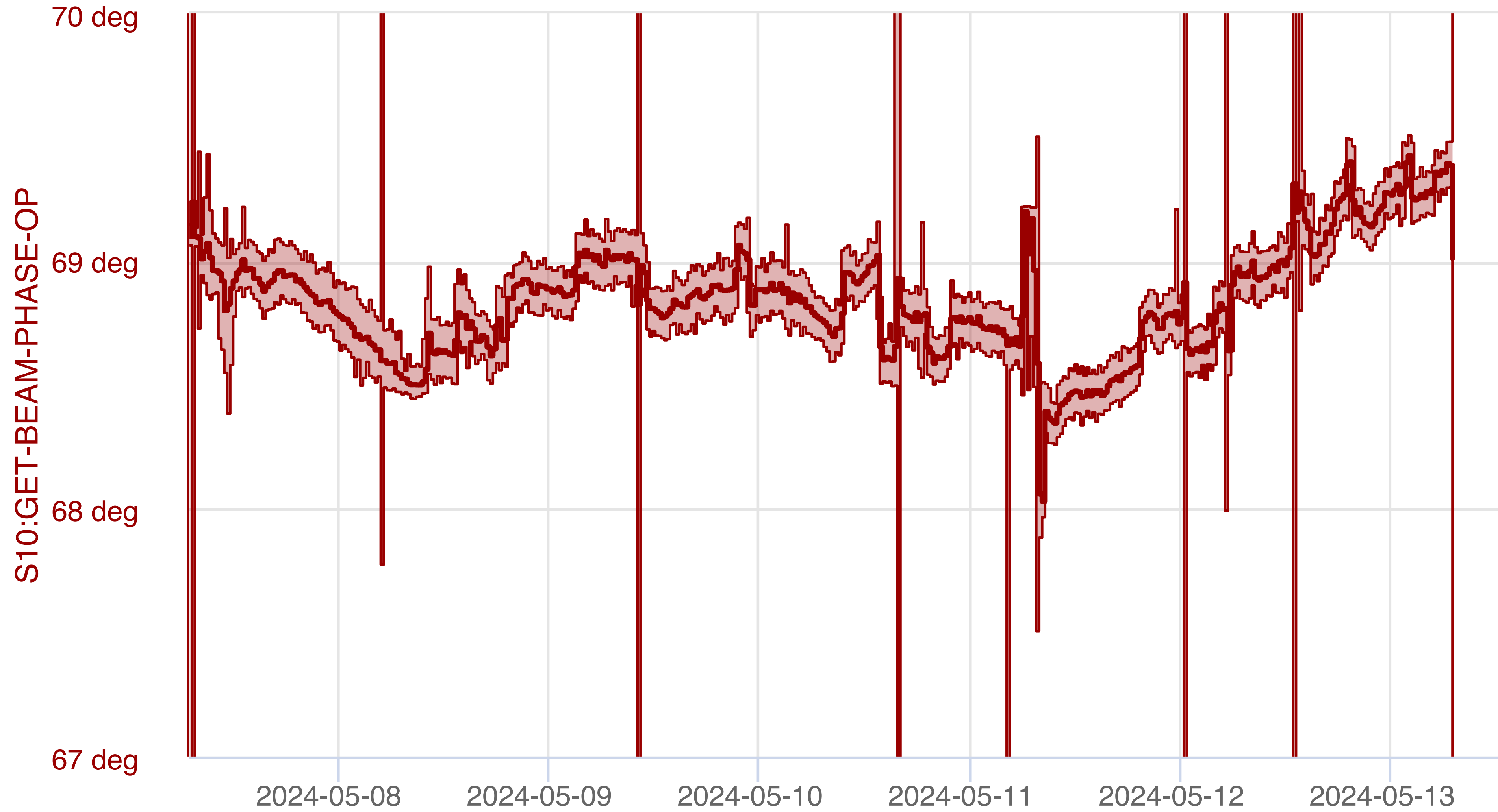
STABILITY ISSUES DURING THE WEEKEND

- ▶ Speculation: is there a correlation to the changes in Earth's magnetic field in response to the solar storm?



LINAC 1 PHASE

Data retrieved 2024-05-13 12:36:25.257



● S10:GET-BEAM-PHASE-OP

NORTHERN LIGHTS

