



Accelerating access to data and research collaborations through trusted research environments (TREs)

Prof. Jean Louis Raisaro, PhD

Assistant Professor in Biomedical Informatics and Data Science

Biomedical Data Science Center of CHUV and UNIL

The Unprecedented Surge in Biomedical Data

The current avalanche of biomedical data is revolutionizing our understanding of health and disease, presenting both **unprecedented opportunities** for medical advancements but also **many challenges**

By 2025, the healthcare industry is projected to generate 2,314 exabytes of data.
(1 exabyte = 732 billions of SD movies)



This is Marie

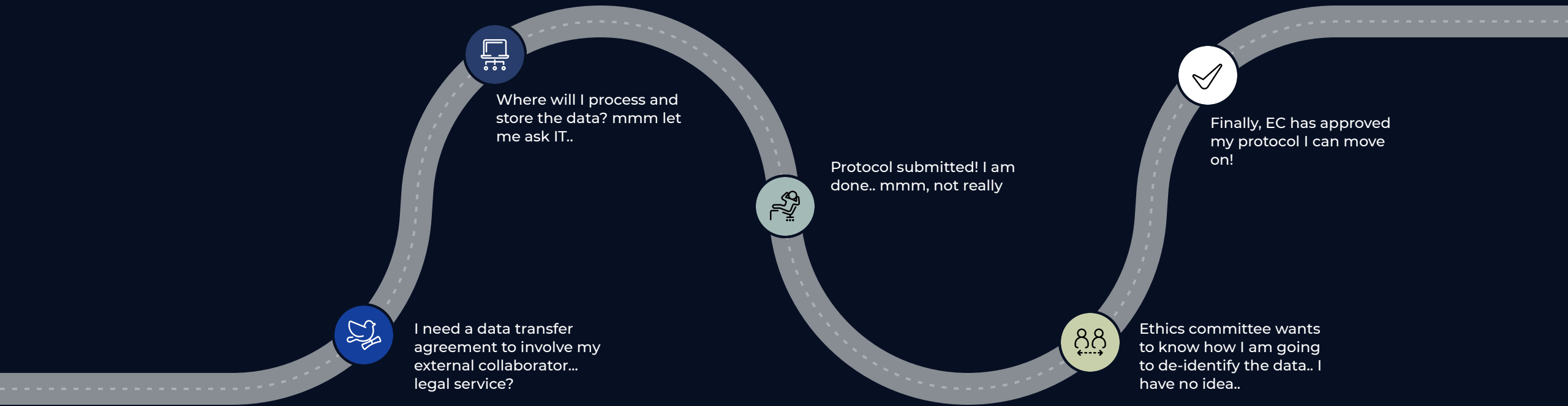
- Chief Resident and **clinical researcher** in the Department of Oncology
- She wants to **study overall survival** (OS) of patients affected by brain tumors who undergo radio therapy or pharmacological treatment
- She also wants to **collaborate** with a friend who is professor in AI at the nearby technical school
- They want to develop a **new ML algorithm** that could help clinicians to predict OS for each patient more accurately



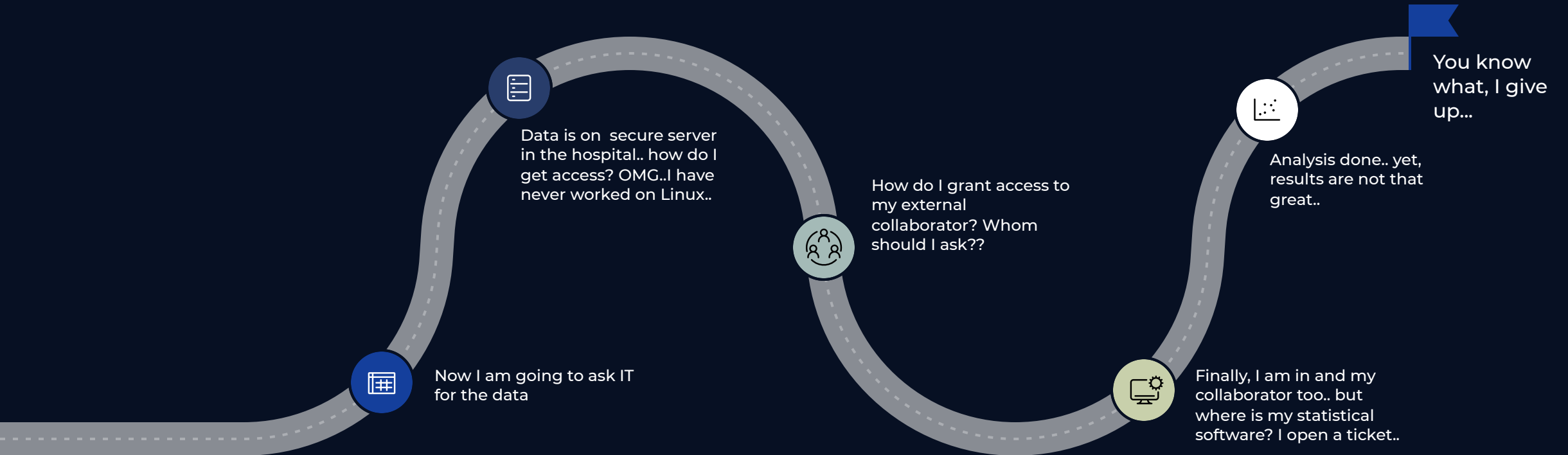
Marie's painful road to data



Marie's painful road to data (continued)



Marie's painful road to data (end?)



If you were Marie, would you still be motivated to do research in this setting?

Today it can take up to several
months from an idea to the data

DAYS

HOURS

MINUTES

SECONDS

But researchers are not the only victims...



This is Paul

- He is a data engineer, working in the hospital research IT and his job is to **help researchers** like Marie to navigate the complex path towards data
- But, Paul's team is **heavily understaffed** and researchers have been waiting for more than 2 months now.. he cannot go faster with such few resources
- Paul decides to build a new app to enable researchers to do cohort exploration on their own, but **how to let researchers know that the app exists?**

This is Viktoria

- She works at the DPO office and she is responsible for **data governance**
- She has to make sure that the hospital **complies with all regulations** when it comes to re-use of data for research
- But, she has no way to know what projects are ongoing in the hospital at a given point in time, where is the data for each project and who has access to it.. **she is blinded..**



Current pain points



Fragmentation

Research tools and services are fragmented,
even within a single institution



Lack of collaboration

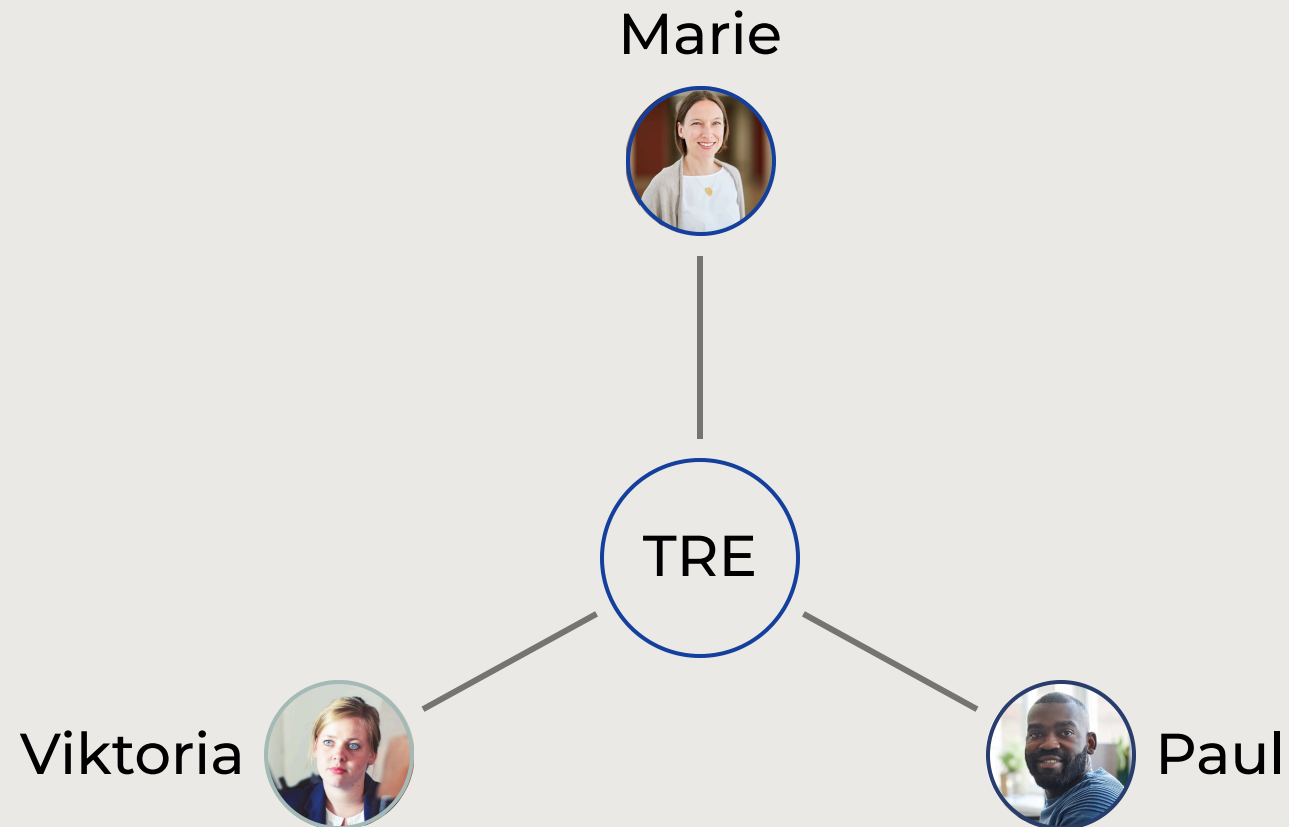
Researchers struggle to share data and
findings with external collaborators



Compliance difficulties

Meeting regulatory requirements for data
privacy and security is hard

Can Trusted Research Environments (TREs) be part of the solution?



What is a Trusted Research Environment?

A TRE is a secure computing environment that provides remote access to health data for approved researchers

TREs make research safer

Personal health data is accessed in a secure and privacy-preserving way



Viktoria

TREs help make research efficient and collaborative

Researchers can find rich data and generate deep insights to improve healthcare and patients' lives



Marie

TREs are one-stop shops for data and analytical tools

The data and analytical tools are all in one place



Paul



Marie

How is data safeguarded?



Safe People

Only trained and specifically accredited researchers can access the data



Safe Data

Data has been de-identified to protect privacy



Safe Projects

Data is only used for ethical, approved research



Safe Outputs

All research outputs are checked to ensure no sensitive information leaves the TRE



Safe Settings

The data never leaves the TRE

The "Five Safes" model

Our vision: CHORUS



- CHORUS is a secure virtual platform for **collaborative research**;
- It is cloud-friendly and **infrastructure agnostic**;
- It is going to be **open-source**
- It will be available in **2025**

CHORUS: set of measures of a theme providing the harmonic framework for improvisations

CHORUS core principles



Privacy-enhancing technologies

Privacy-enhancing technologies enable a controlled and progressive access to data



Policy-based sand-boxing

Have clear and transparent policies around data access and use



User-centric design

Involve users in the design process to build trust and tailored UI/UX

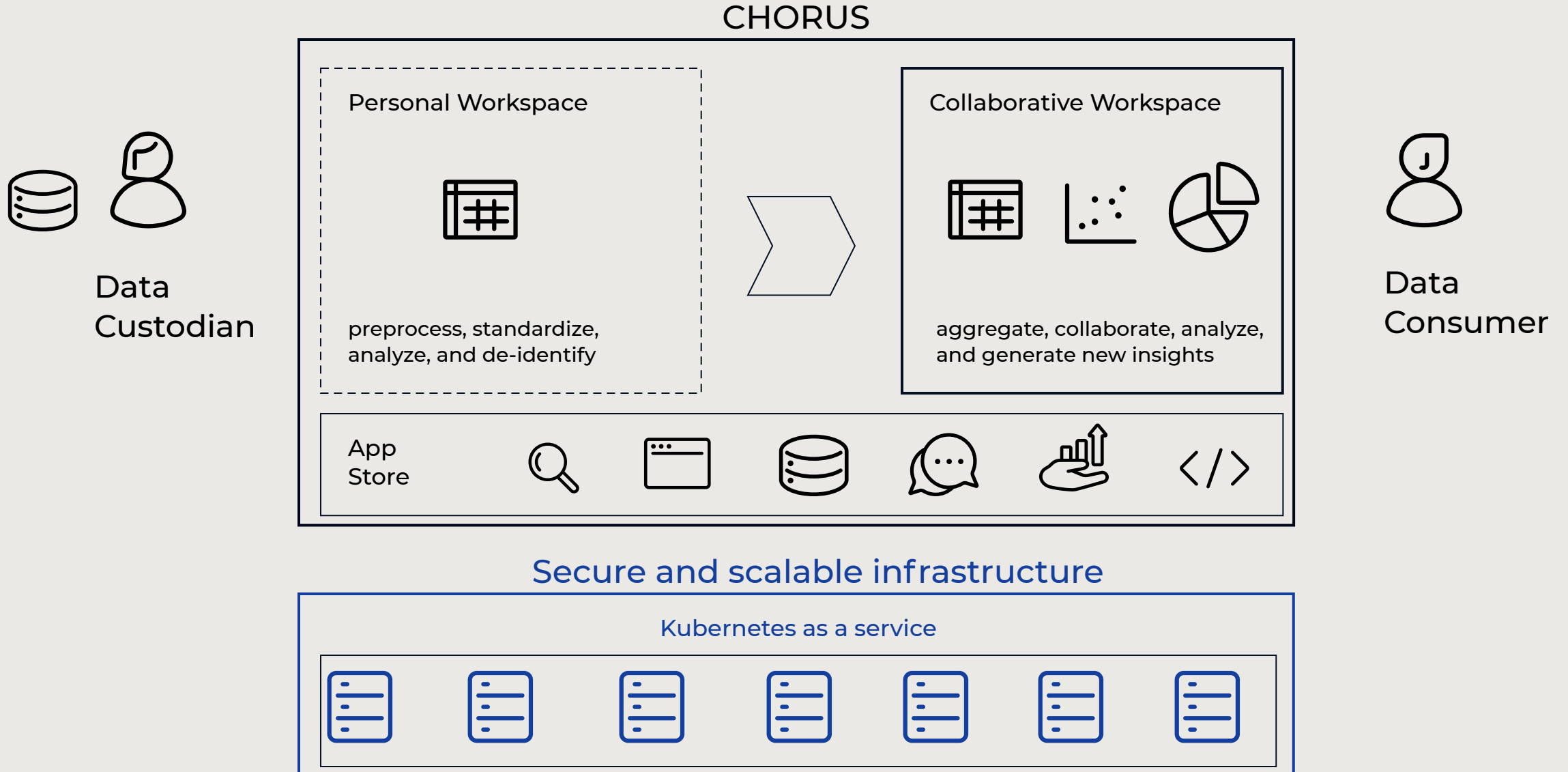


Open community

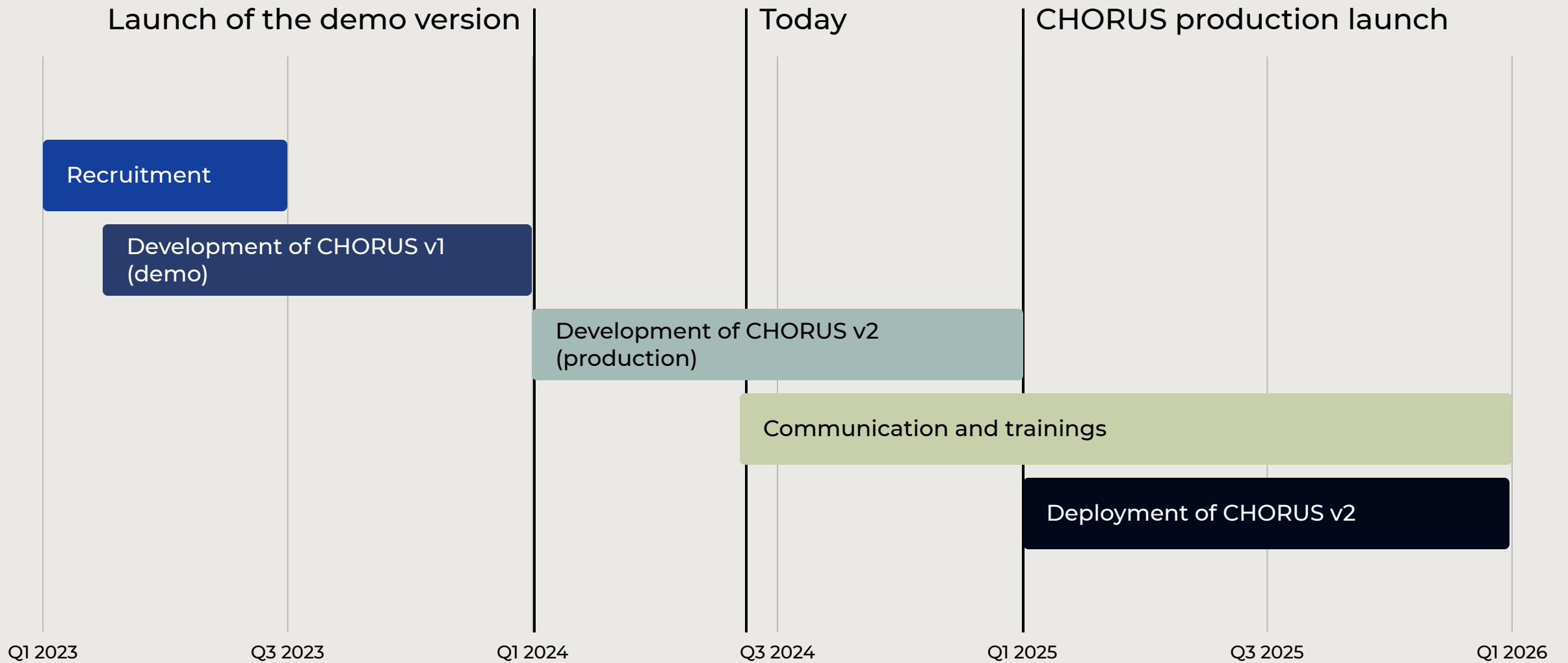
Engage with the community to co-design policies, develop new apps and build trust

By focusing on privacy, user needs, community engagement, and transparency, we can build trusted research environments that meet user expectations.

CHORUS working principle



Project plan and timelines





CHORUS at CHUV-UNIL

- Ongoing effort to deploy CHORUS at CHUV as central component of its clinical research platform
- It will allow to safely expose CHUV data to CHUV-UNIL researchers and their external collaborators (including from industry)

Unil

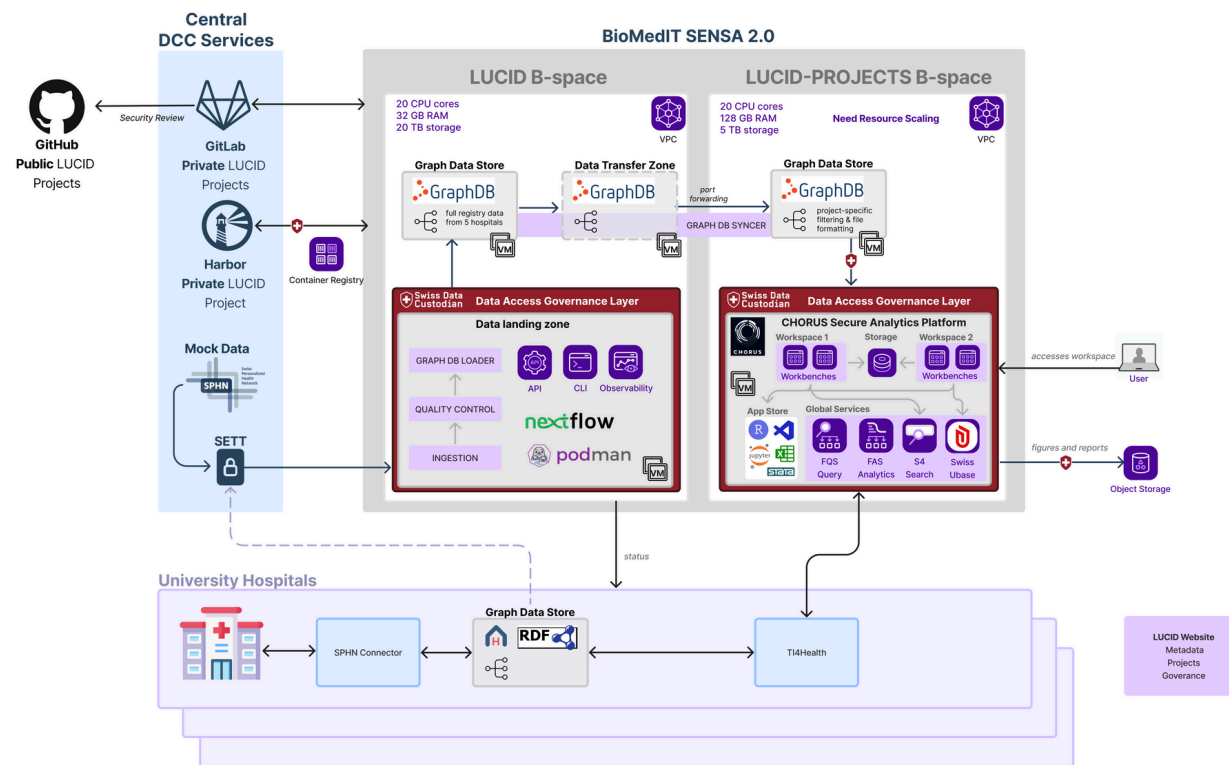
UNIL | Université de Lausanne

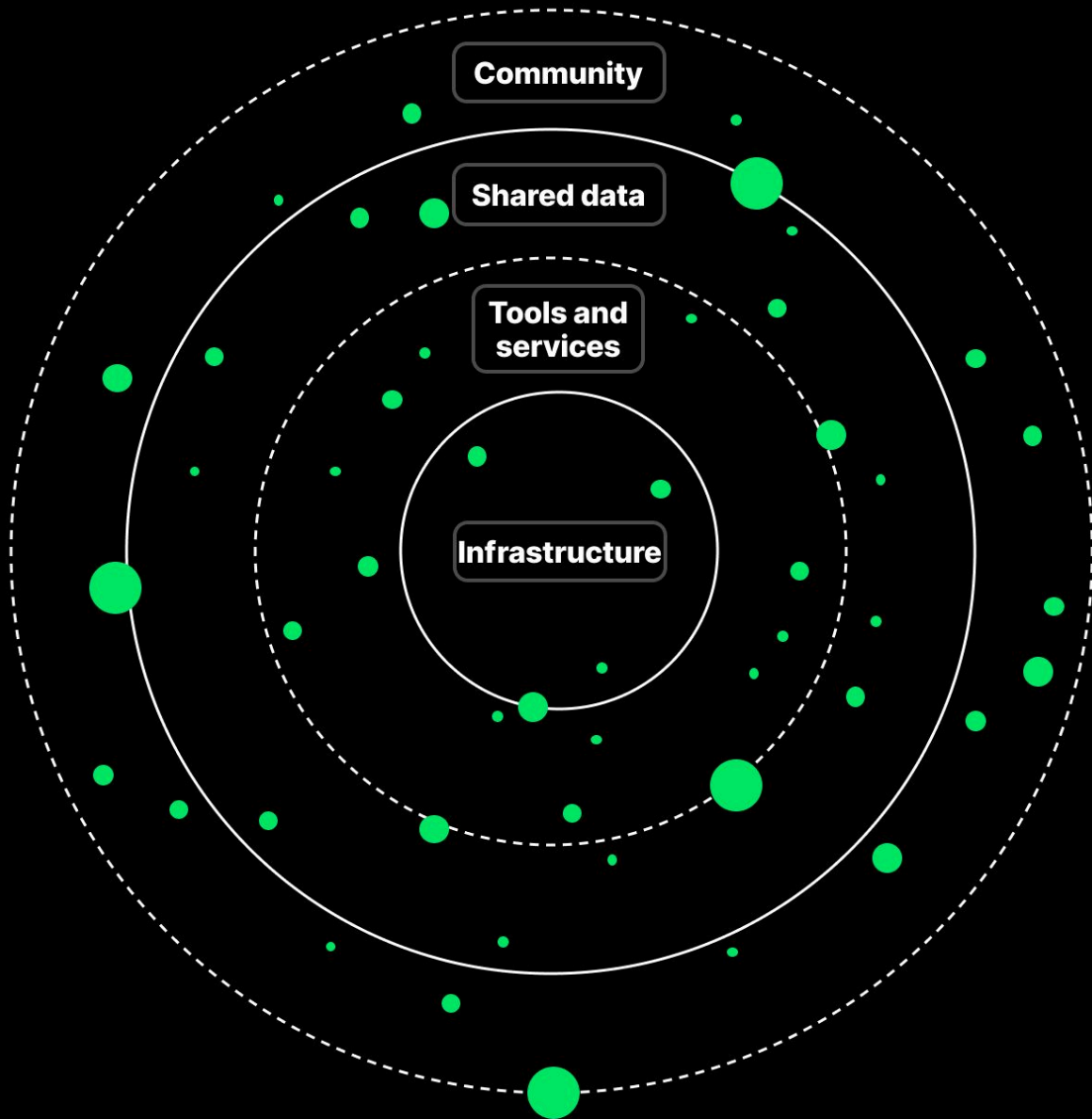
Faculty of Biology and Medicine



CHORUS in Switzerland

- Ongoing effort to deploy CHORUS on SENSE 2.0 (powered by Switch)
- Pilot use case with LUCID National Data Stream



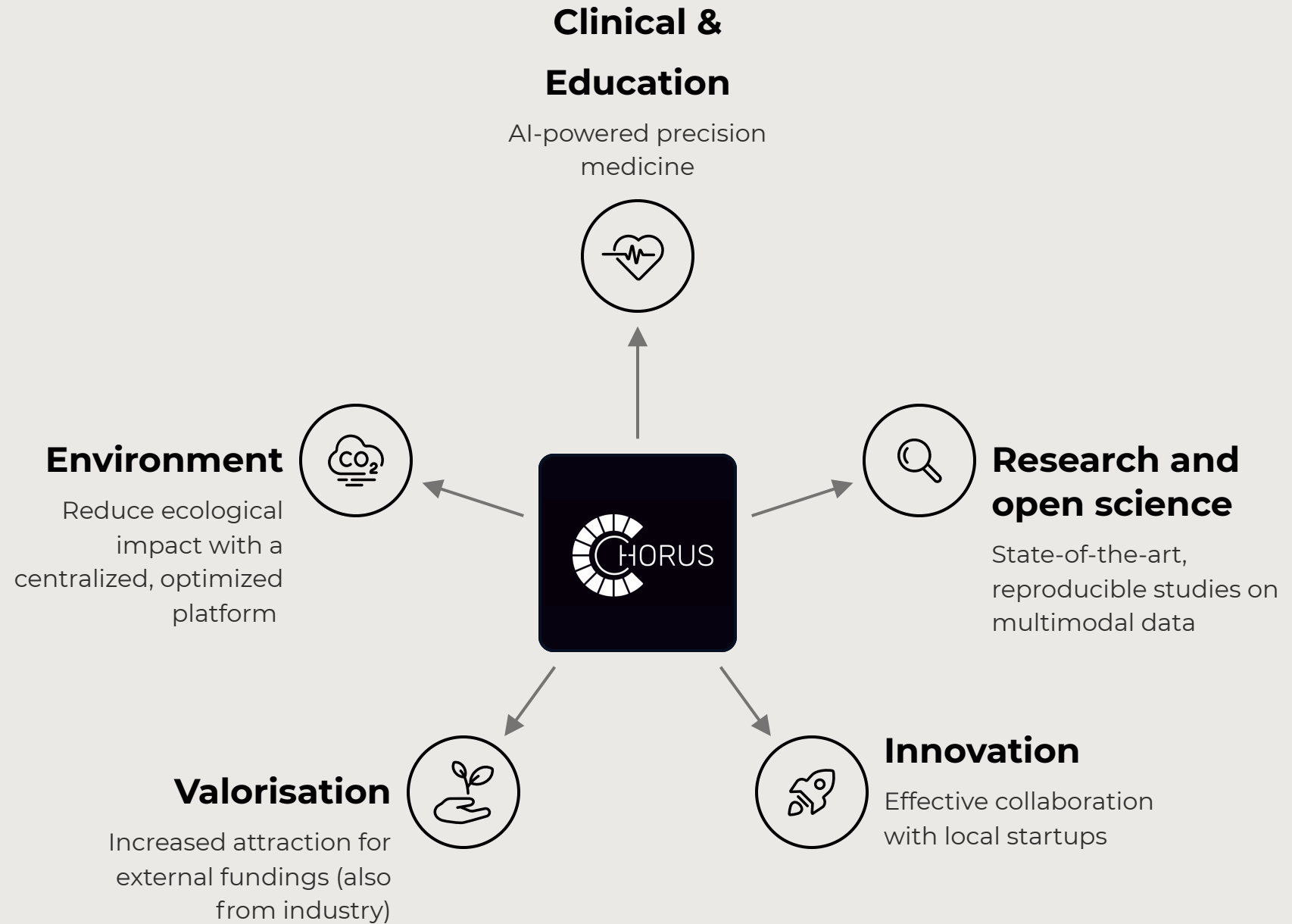


CHORUS in Europe

- Ongoing effort to install CHORUS in Switzerland, Italy and France as part of the Human Intracerebral EEG Platform - HIP
- 23 institutions already onboarded



The potential impact is enormous



Demo

“In an era of increasing digitalization in healthcare, trusted research environments that protect health information are not just an option, they are a necessity.”

AMERICAN MEDICAL INFORMATICS ASSOCIATION

Acknowledgments

Project leadership



Jean Louis Raisaro

Project lead
BDSC



Solange Zoergiebel

Project co-lead
DSI



Nathalie Casati

Tech lead
BDSC



Roberto Colotti

Project Manager
BDSC

Sponsorship and strategic advisory



Mauro Oddo

Director
DIRC



Raphaël Gottardo

Director
BDSC



Pierre-François Regamey

Director
DSI



Alberto Schena

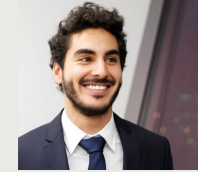
Director
PACTT

Biomedical Data Science Center team



Manuel Spuhler

UX/UI specialist



Sami Perrin

Full-stack architect



Bayrem Kaabachi

Data privacy expert

IT Department team



Pierre-Adrien Ghiringhelli

Data engineer



Yves Jaggi

Data engineer



Samira Najih Besson

Project Manager

NeuroDigital team



Florian Sipp

DevOps specialist



Julien Dhallenne

DevOps and security specialist



Yoan Blanc

DevOps and back-end specialist



Viktoria Bastic Schmid

Product manager



The trusted analytical platform for
sensitive data

COMING SOON