

PAUL SCHERRER INSTITUT



Wir schaffen Wissen – heute für morgen

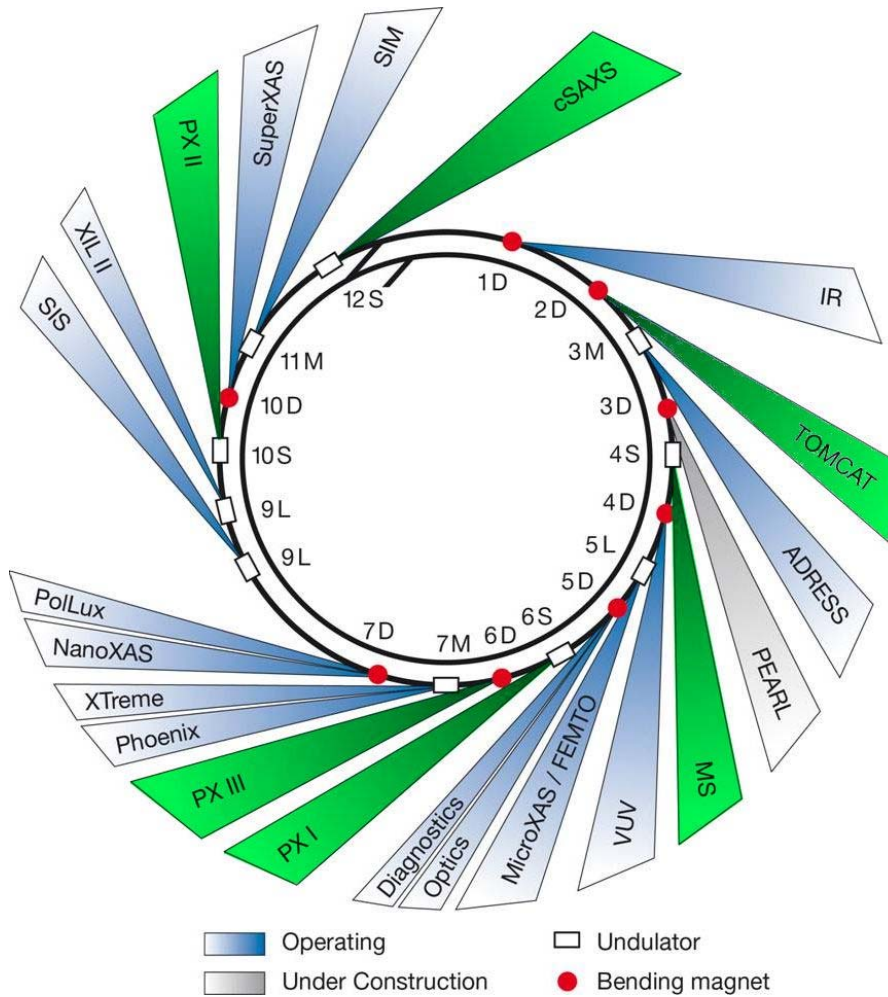
Paul Scherrer Institut  
Oliver Bunk



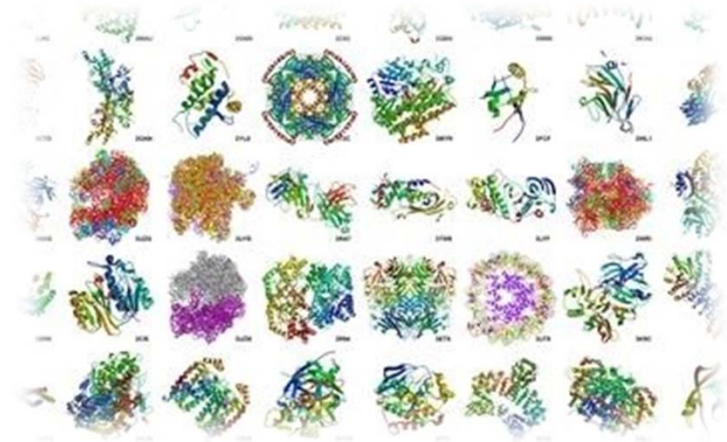
# PSDI: An impressive history

PSDI 1	1993	Zeneca GB
PSDI 2	1994	Smith Klein Beach GB
PSDI 3	1995	GlaxoWellcome GB
PSDI 4	1996	Pfizer Sandwich GB
PSDI 5	1997	Zeneca GB
PSDI 6	1998	Roche Welwyn GB
PSDI 7	1999	Smith Klein Beach GB
PSDI 8	2000	Aventis F
PSDI 9	2001	Glaxo Smith Klein GB
PSDI 10	2002	AstraZeneca GB
PSDI 11	2003	Medivir SE
PSDI 12	2004	Pfizer GB
PSDI 13	2005	Astex GB
PSDI 14	2006	Novartis IT
PSDI 15	2007	<b>ESRF</b> F
PSDI 16	2008	Glaxo Smith Klein GB
PSDI 17	2009	Roche, Basel CH
PSDI 18	2010	<b>Diamond Light Source</b> , Randolph Hotel Oxford GB
PSDI 19	2011	AstraZeneca Mölndal SE
PSDI 20	2012	Sanofi, Chateau de Montvillargenne F
<b>PSDI 21</b>	<b>2013</b>	<b>Lucerne, CH</b>

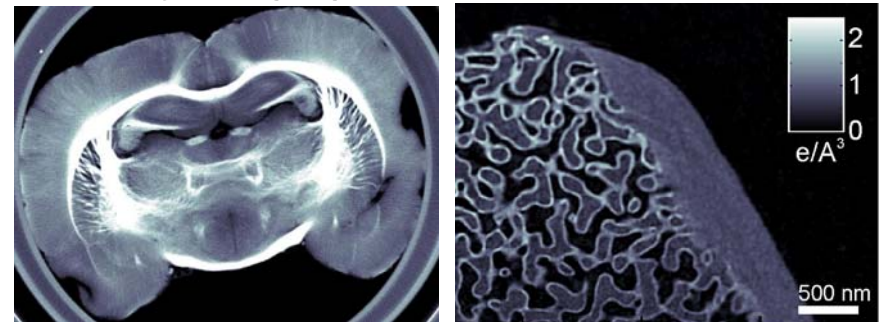




- Protein crystallography: PX I, PX II, PX III

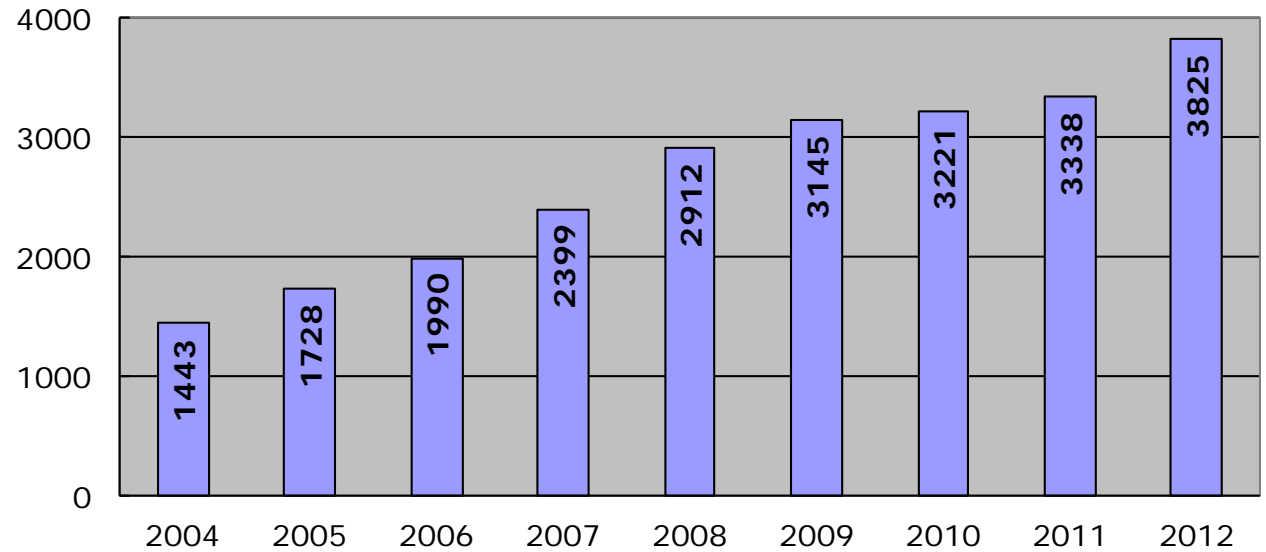


- 3D X-ray imaging (CT): TOMCAT, cSAXS

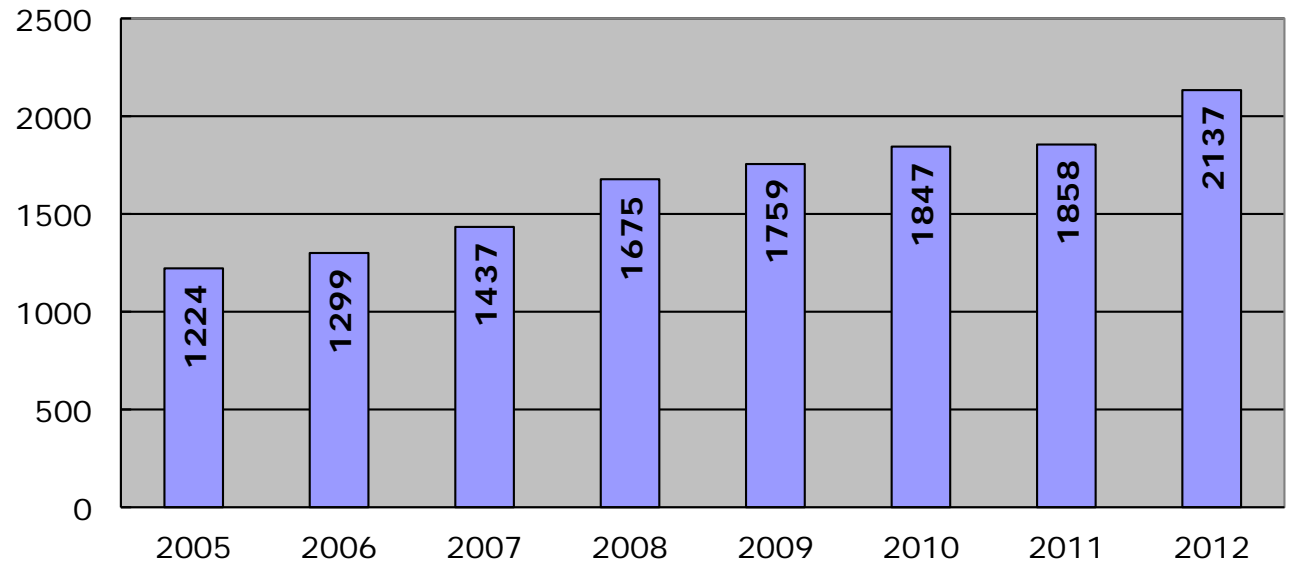


- Powder Diffraction: MS
- Small-angle X-ray scattering: cSAXS

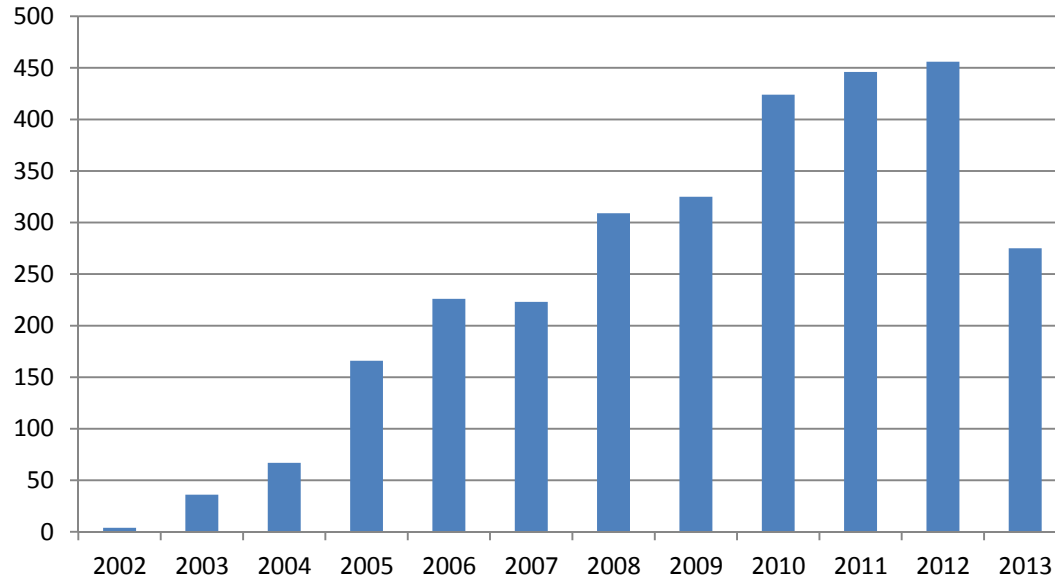
SLS user visits:



PX user visits:

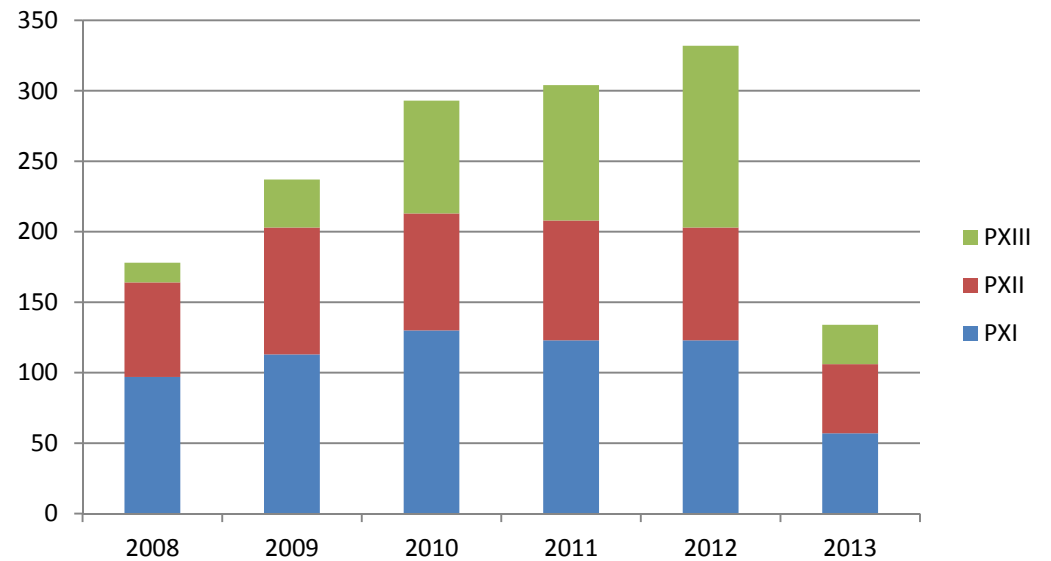


# Non-proprietary research: Key figures



PDB depositions, 2957 in total.

Peer-reviewed publications:



## 1) Beamline partner (long-term commitment)

PX II:



(100%)

PX III:



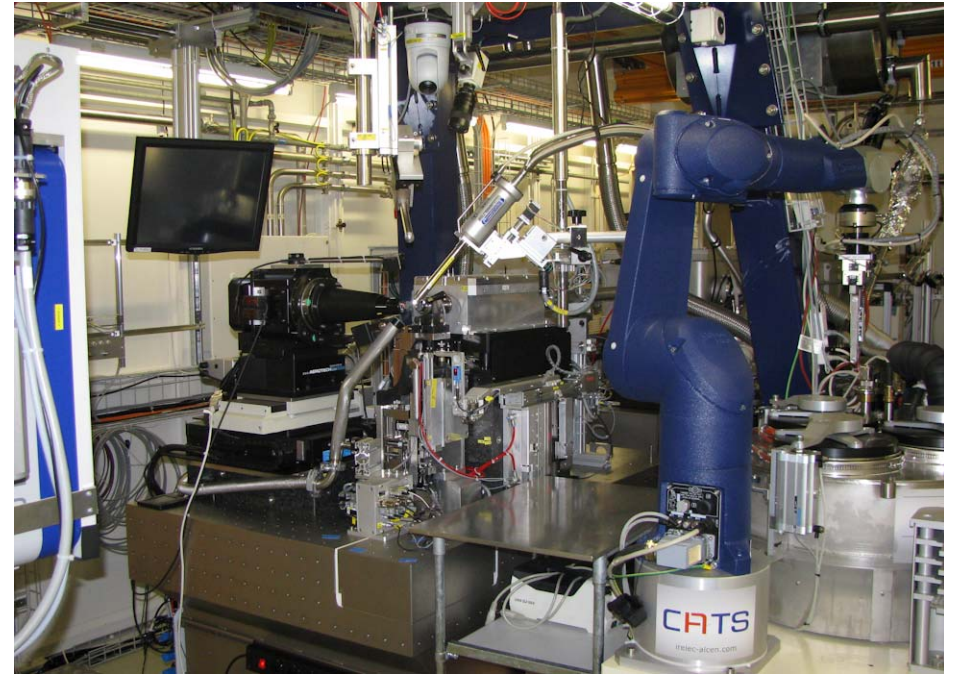
(40%)

## 2) Individual 8 hour shifts via *SLS Techno Trans AG*

## 3) Pay-per-sample

+ In all cases data collection by **EXPOSE**  
DATA COLLECTION SERVICE





- Detectors: Currently all PILATUS. Next: EIGER.
- Adaptable X-ray micro-focus.
- *In-situ* screening.
- New data acquisition software.
- Crystallization facility upgrade.
- ...