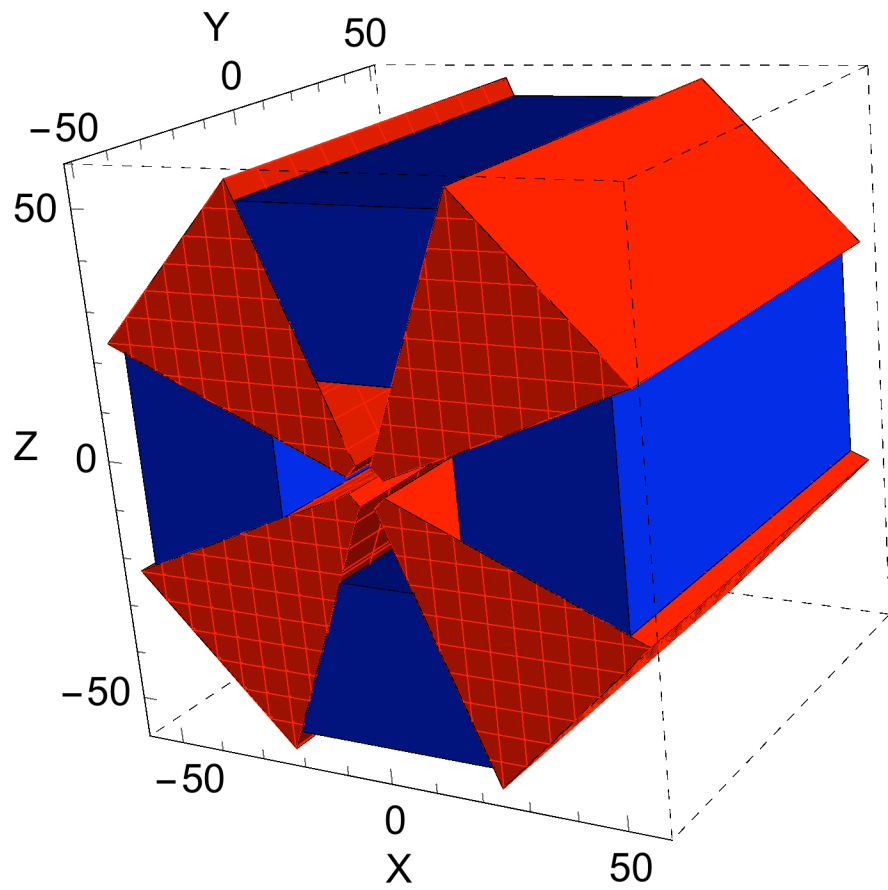


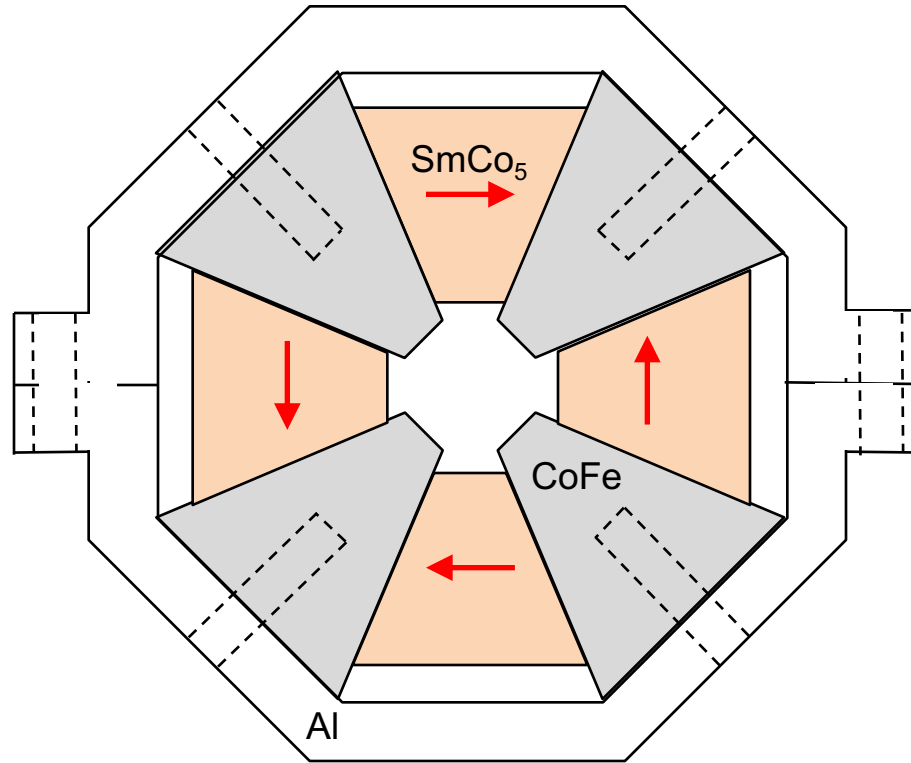
Aperture: 5.0 mm

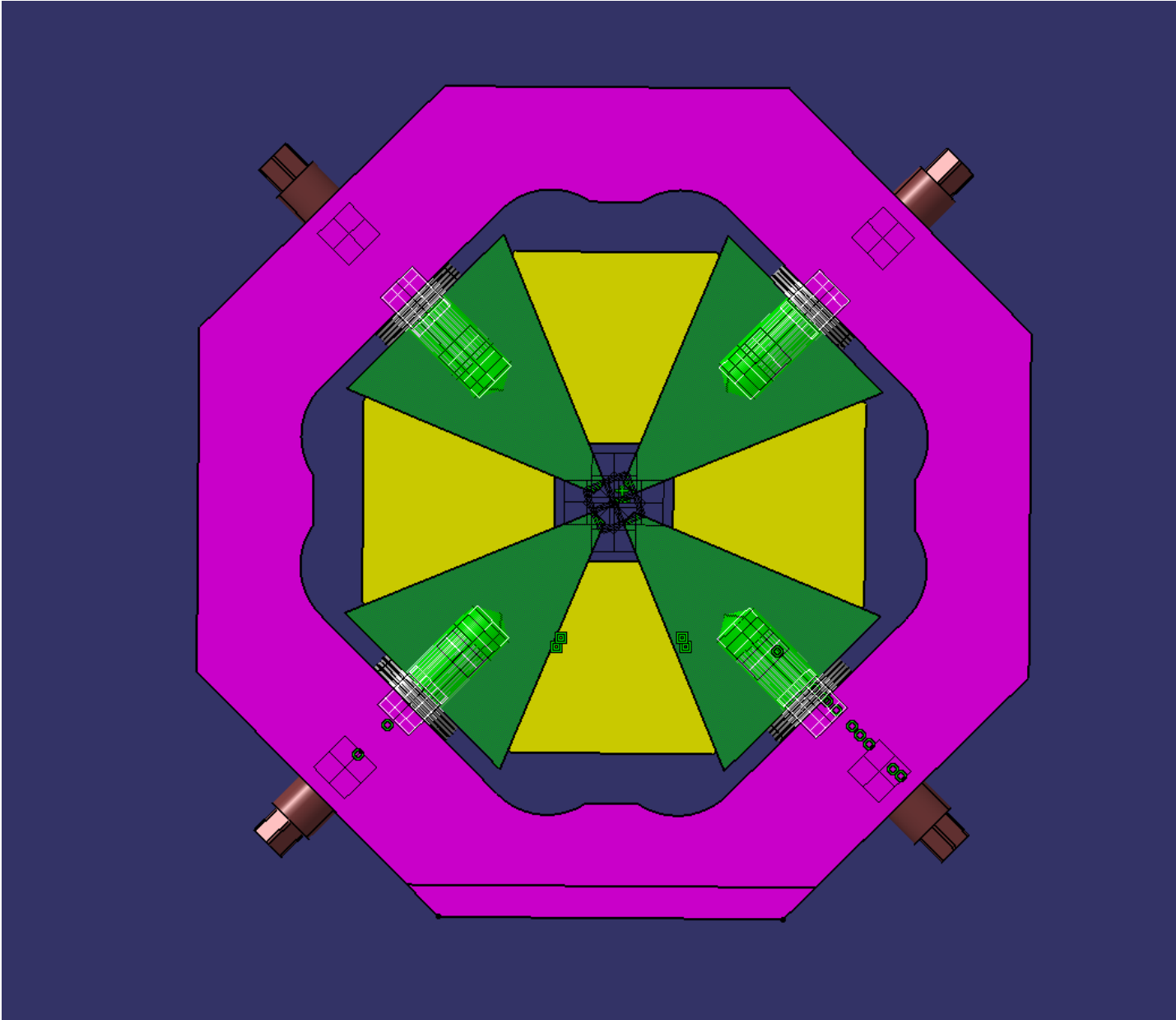
SmCo₅ (Br=0.95T)

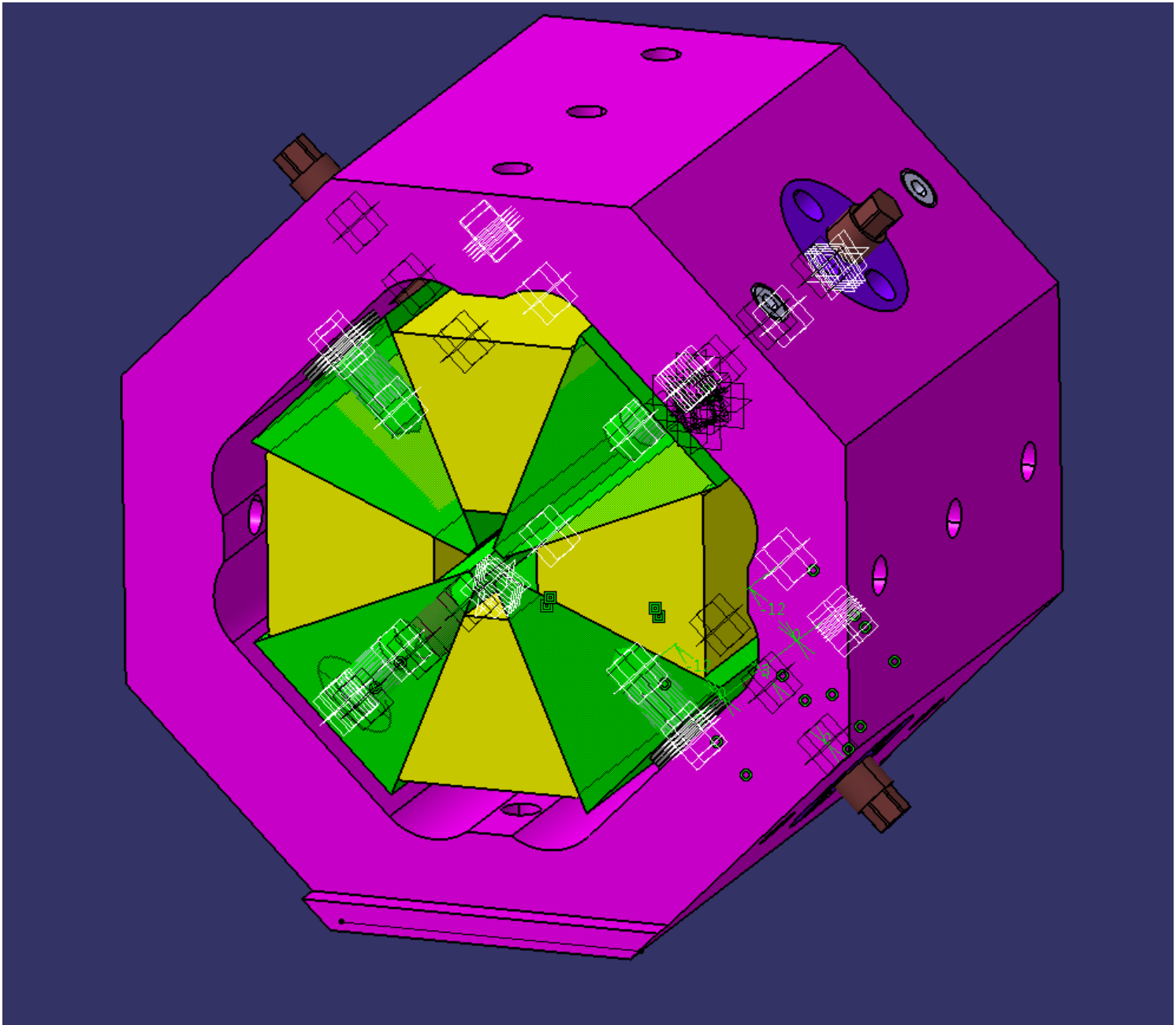
Halbach configuration

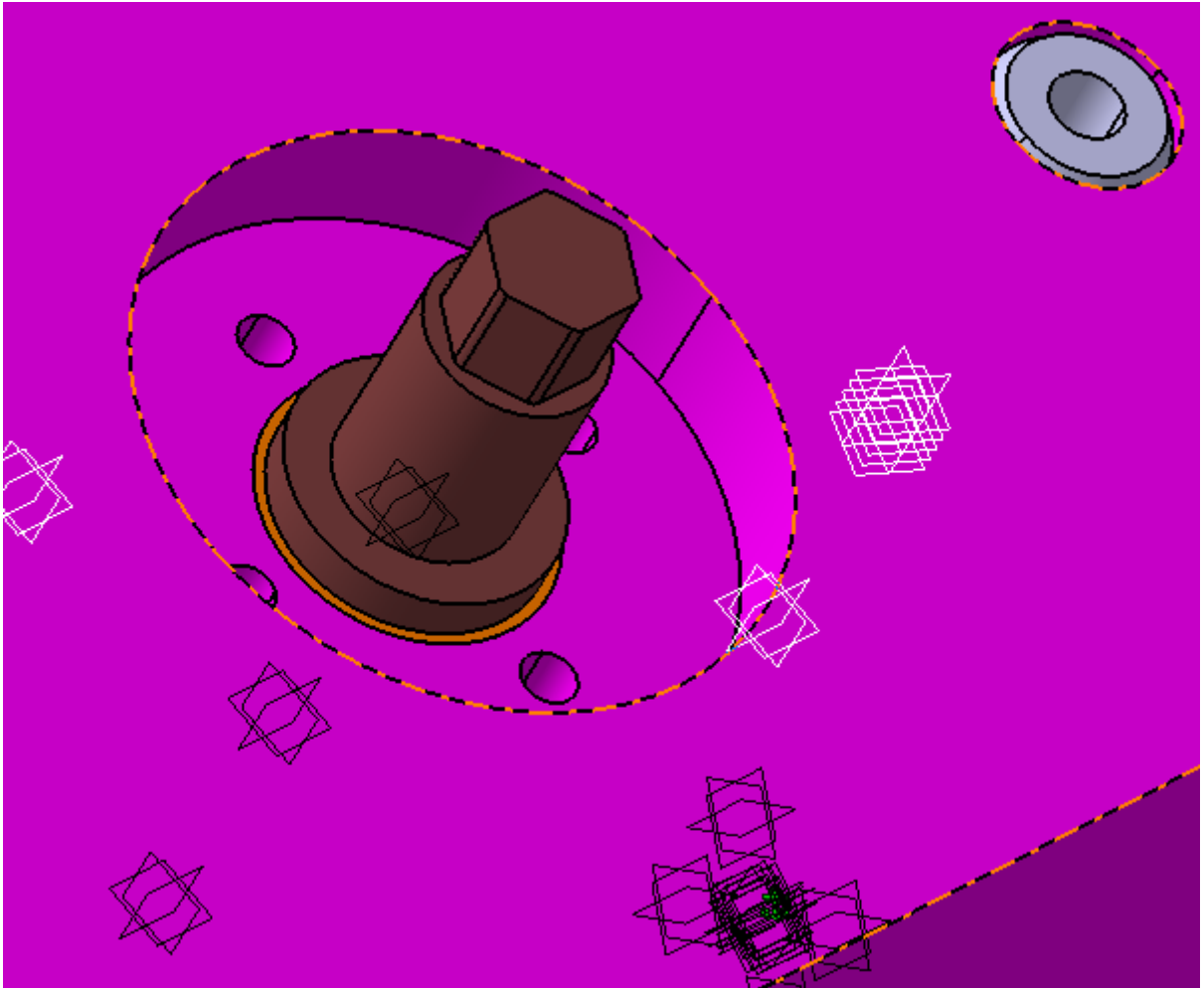
Gradient: 525 T/m











Bauteil	Anzahl	Rohmasse [mm]	Rohmaterial [CHF]	Fertigungskosten [CHF]	Total [CHF]
SmCo5	4	100x32x65	3000	800	3800
CoFe	4	D60 L106	120	320	440
Frame 1	1	100x200x105	110	520	
Frame 2	2	100x200x106	110	360	470
			3340	2000	4710

Bauteil	Anzahl	Rohmasse [mm]	Rohmaterial [CHF]	Fertigungskosten [CHF]	Total [CHF]
SmCo5	24	100x32x65	14064	4800	18864
CoFe	24	D60 L106	600	1920	2520
Frame 1	6	100x200x105	550	741	
Frame 2	12	100x200x106	550	806	1356
			15764	8267	22740

Total [CHF]	Anzahl Sätze QP	Kosten/Satz QP	Einheit
4710	1	4710	CHF
22740	6	3790	CHF