



WIR SCHAFFEN WISSEN – HEUTE FÜR MORGEN

Information: 14 September 2017

PSI-FELLOW II-3i – Kick-off Meeting

**Marie Skłodowska-Curie Action
Horizon 2020 COFUND Program**

Stefan Müller & Daniela Jahns
Program Management Unit
Paul Scherrer Institute

Marie Curie

1867 - 1934

- Marie was awarded the Nobel prize in physics in 1903 for her work with X-rays
- She was also awarded the Nobel prize in chemistry in 1911 for her work with radium

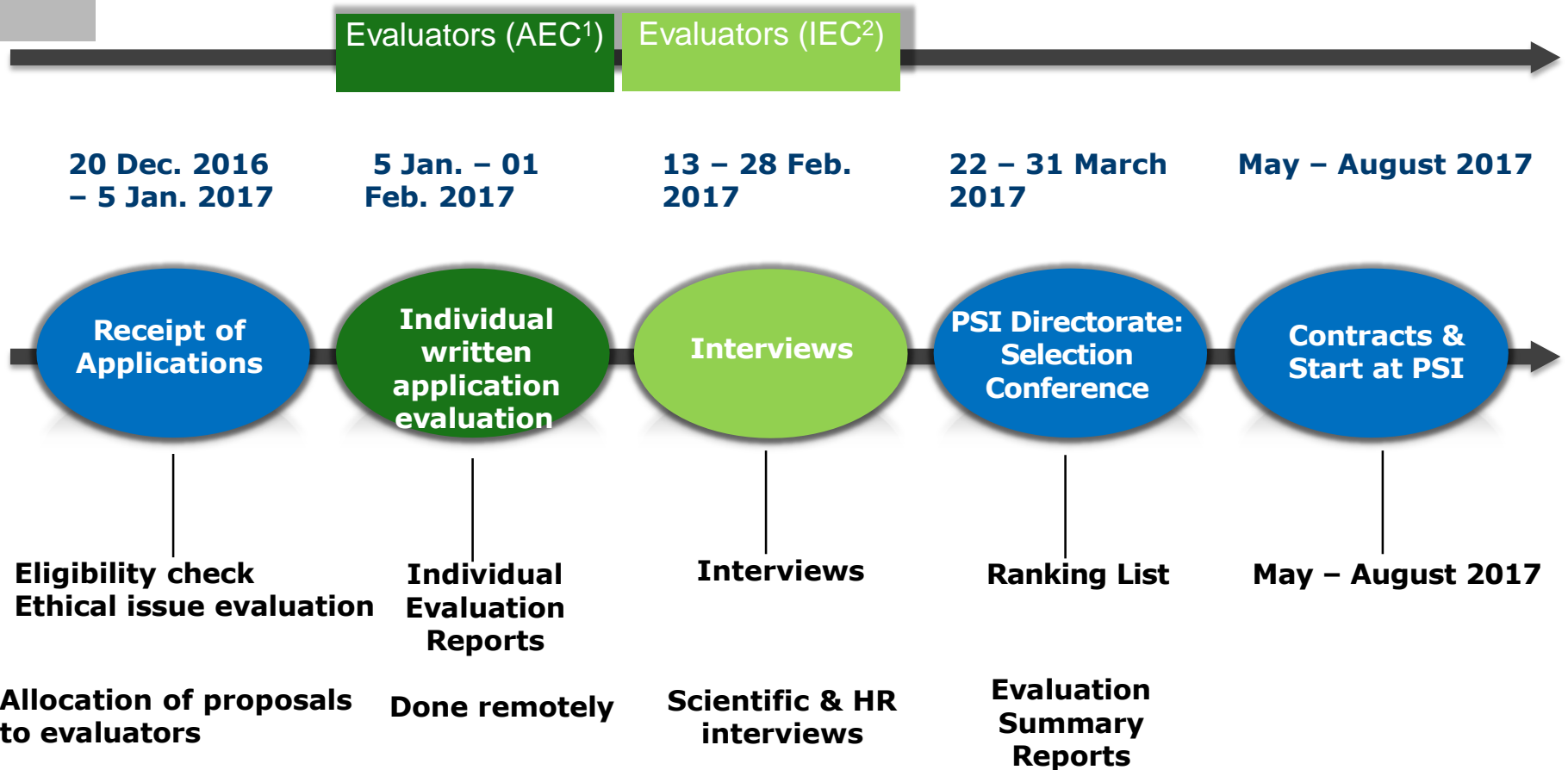
Another highlight of Marie's life

During WWI she brought X-rays to the field to treat soldiers



Overview Selection Process:

PSI-FELLOW-II-3i Evaluation Process



¹AEC: Application Evaluation Committee

²IEC: Interview Evaluation Committee

Evaluation criteria	Relevant application part*			
	CV	Research proposal	References	Interview
Scientific excellence				
Scientific capability	X		X	
Research potential	X		X	
Originality and scientific viability of proposed project		X		
Impact of the proposed project		X		
Expert knowledge				
Quantity and quality of past scientific work	X		X	
Match of the proposed work with previous work experience		X	X	
Willingness to become involved in multi-disciplinary research and inter-sectoral components				
Clearly stated desire to conduct multi-disciplinary research		X		
Study or experience in a different field outside of PhD	X		X	
Ability to explain the advantage of these opportunities for future career		X		
Communication skills and social skills				
Oral communication abilities				X
Presentation skills				X
Interpersonal abilities and leadership potential				X
Independent thinking				X
Practicing scientific integrity and scientific culture				X
Ability to sell based on past experiences				X
Ability to present career goals and how the fellowship fits in				X

Written Application

Interviews

Table 1

Individual evaluation criteria for each of the two main aspects.

Written Applications: 2 external reviewers + 1 FoKo-member per application

Scientific Interview: 1 external + 1 FoKo interviewer per applicant

HR Interview: 1 HR expert per applicant

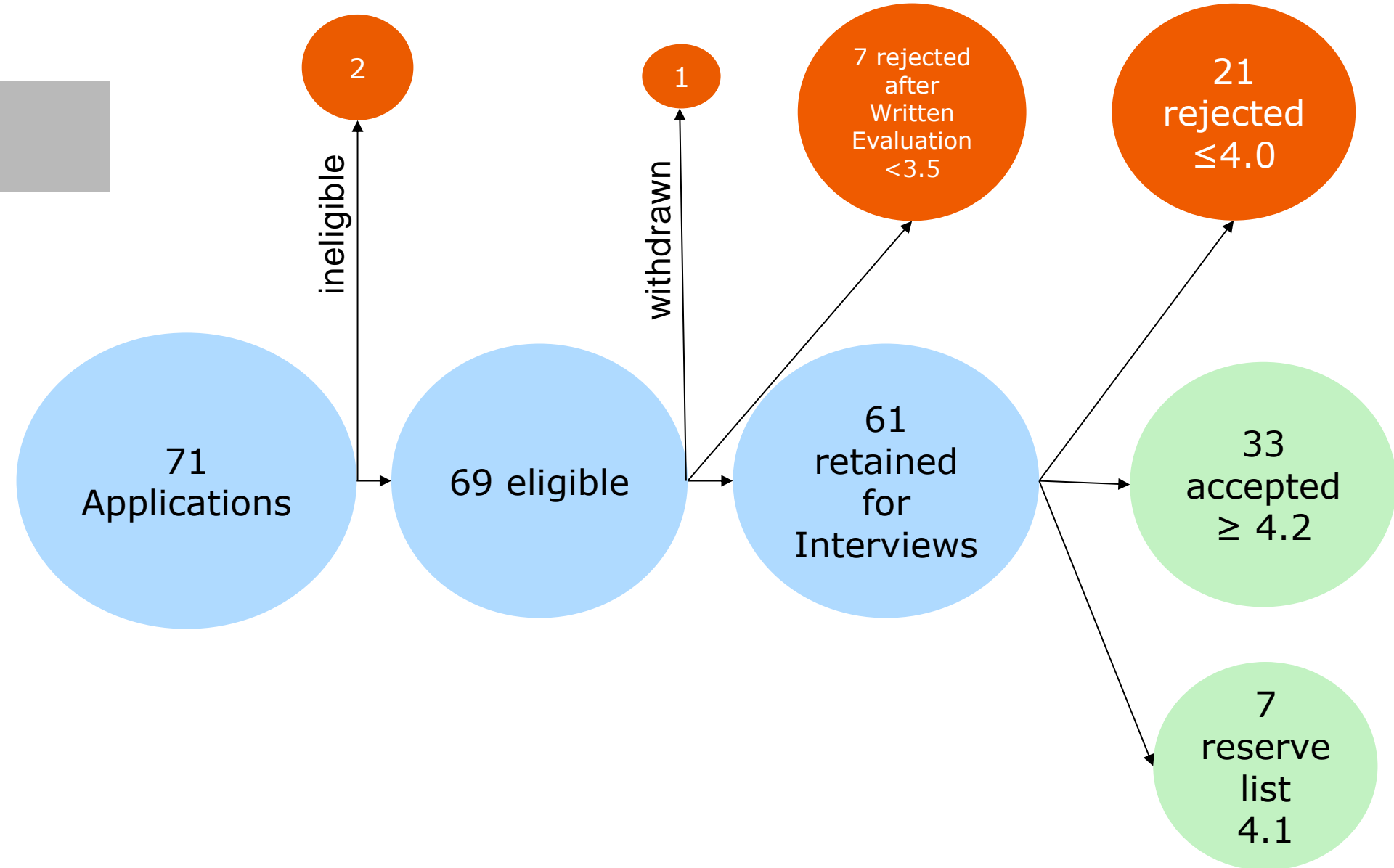
- Ethical Reviews: PSI Ethical Committee 1-3 reviewers
- Written Applications: 58 reviewers (incl. FoKo-Members)
- Interviews
 - Scientific Interviews: 21 interviewers (16 already evaluated written applications)
 - HR Interviews: 3 interviewers

Gender:

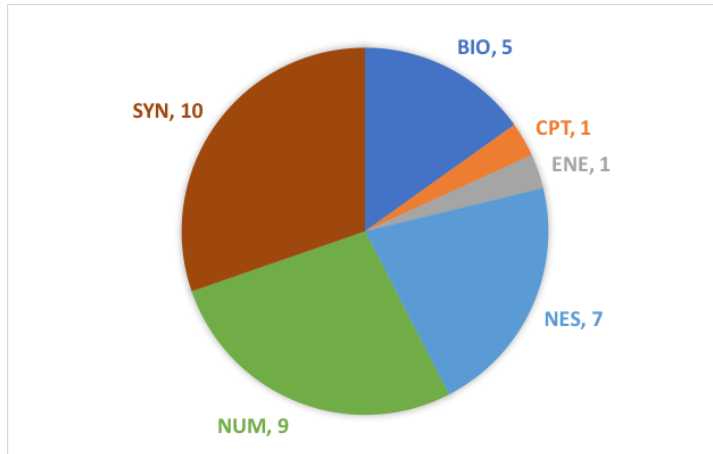
Male: 50 (75%)

Female: 17 (25%)

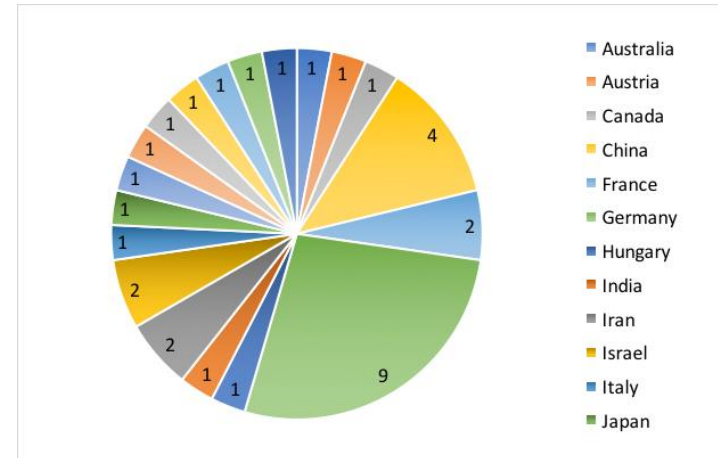
Total: 67



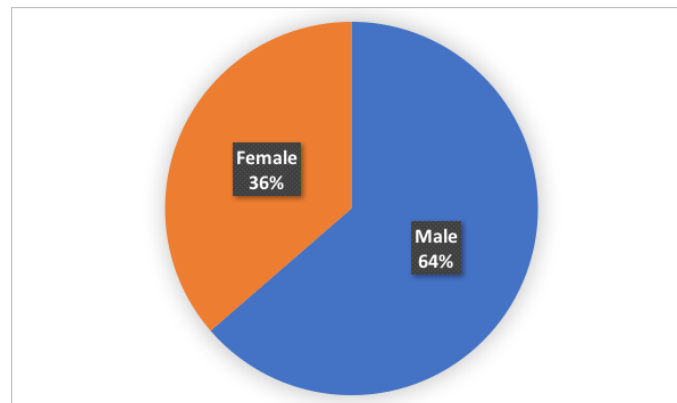
Accepted Applicants



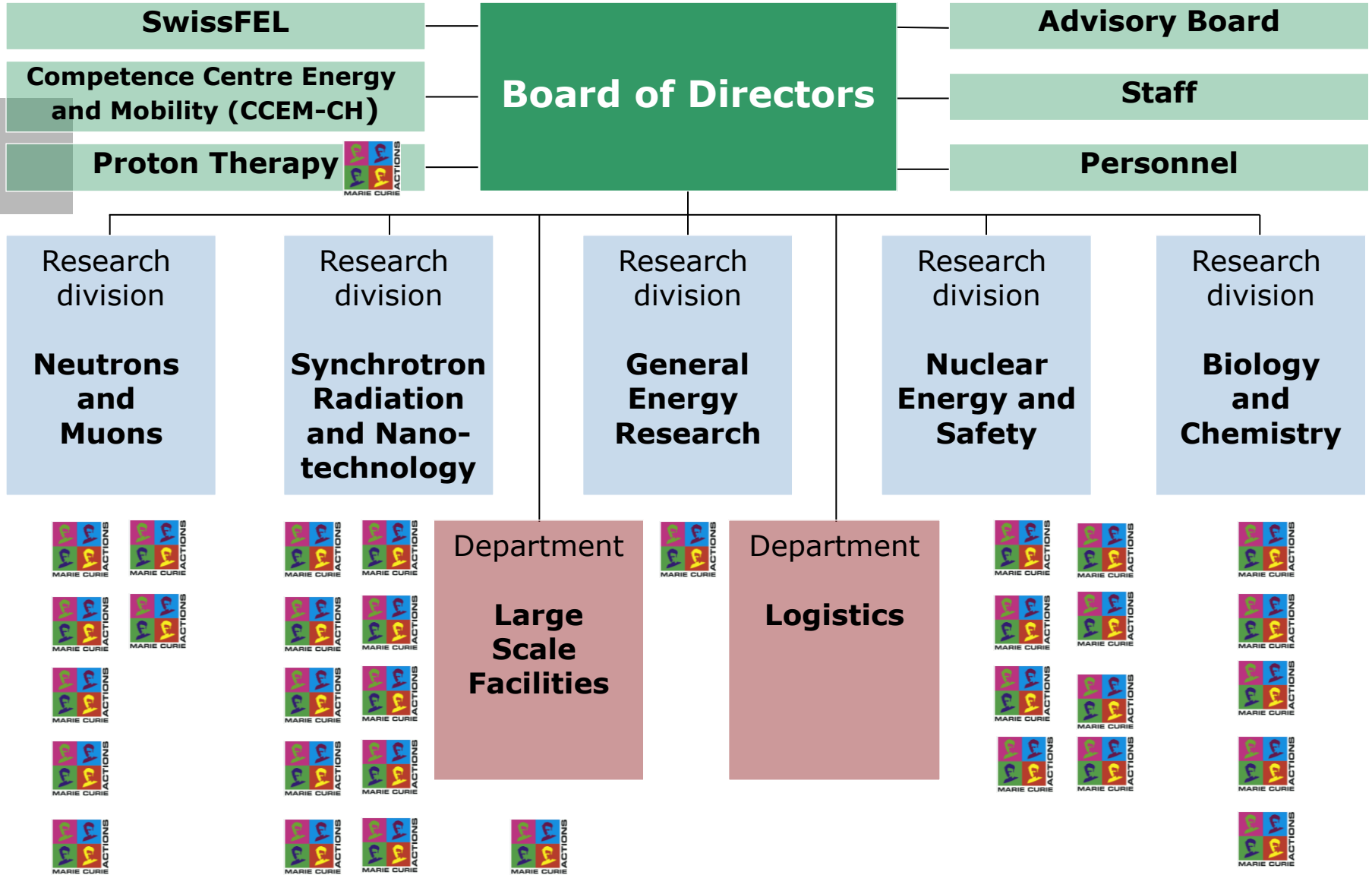
Nationality



Gender



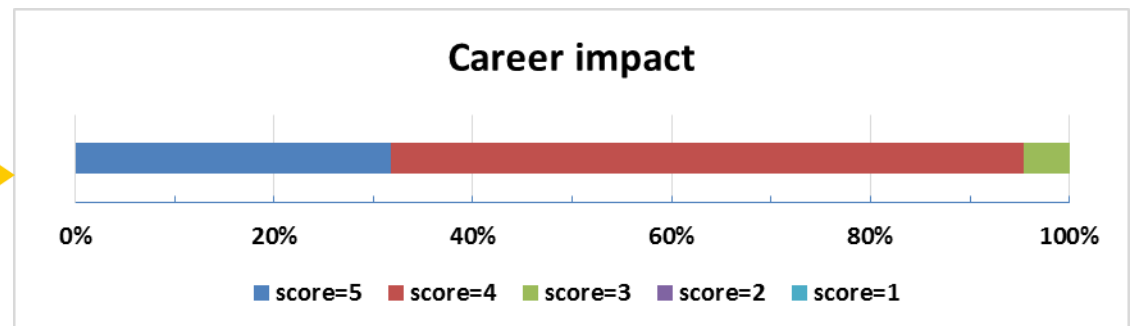
Call 2016/17: 71 applications; 33 accepted



PSI-FELLOW-II-3i objectives

- Establish a novel **international** post-doctoral research program with new **interdisciplinary** and **intersectoral** training elements
- Strengthening PSI research capabilities through additional resources
- Generating a stimulating research and training environment through a coherent fellowship program
- Generating a high visibility of PSI's attractive working conditions
- Use of synergies with other leading research institutions and transfer of knowledge to Europe's industry
- Developing of a PSI-FELLOW brand label (by meeting the program objectives defined in each of the two 5-yr programs)

**Ex-Fellows on
Career Impact of
PSI-Fellow Program**



Offering additional hosting opportunities for the duration of the postdoc employment or secondments



Company	Short description	Collaboration (incl. area)
ABB Asea Brown Boveri Ltd.	Multinational (robotics, power and automation technology)	Yes – new energy systems and associated materials
Ampegon AG	Specialized in RF amplifiers and high voltage power supplies	Yes- amplifier systems and modulators
F Hoffmann-La Roche AG	Multinational Pharma and biotechnology	Yes - long-term collaboration on protein crystallography
IBM Schweiz AG	Multinational IT	Yes – long term in various nanoscale science
Novartis International AG	Multinational Pharma and Biotechnology	Yes – long term collaboration in protein crystallography
Swiss Neutronics AG	PSI Spin-off for optical solutions for neutron and synchrotron worldwide.	Yes – specially SINQ (Neutron-Spallation-Source)
VDL Enabling Technologies Group	Global operations with track record in semiconductor capital equipment, thin film deposition for photovoltaic solar, analytical and medical systems.	Yes – high precision projects, e.g. X-band radio-frequent cavities and accelerator technologies, e.g. free-electron lasers.

Other facilities	Description / Key facts
Institut Laue-Langevin (ILL)	History of on-going exchange since beginning of neutron scattering exp. in Switzerland
Deutsches Elektronen-Synchrotron (DESY)	Various exchanges and representation on both sides in scientific advisory board activities. Latest is the AGIPD consortium for X-ray detectors for EU XFEL.
Soleil Synchrotron (SOLEIL),	Various exchanges and representation on both sides in scientific advisory board activities. Collaborations in X-ray detection for fast scanning X-ray microscopy and X-ray nano-tomography.
Max IV laboratory	New facility in 2016, but already strong collaborations in beamline design etc.
European Spallation Source (ESS)	European neutron facility under construction. Various projects including in field of neutron optics.
ELETTRA & FERMI@ELETTRA	Two photon sources. Free electron laser and electron storage ring. Traditional tight link in various common areas of interest.

- Any dissemination of results (including electronic) must
 - (a) display the EU emblem and
 - (b) include the following acknowledgement text: **“This project has received funding from the European Union’s Horizon 2020 research and innovation programme under the Marie Skłodowska-Curie grant agreement No 701647”**.
- A PSI-FELLOW postdoc must ensure **open access** (free of charge online access for any user) **to all peer reviewed scientific publications** relating to its results.
- All publications related to the funded project must be entered promptly into the PSI Digital User Office (DUO) database
- Attendance at the events, courses, and summer schools, etc. announced by the PSI Program Management Unit (PMU) and stated as mandatory for the fellows
- Contributions to other program-specific activities e.g. secondments, responding to questionnaires disseminated by the PMU
- Annual reporting to the attention of the PMU

Key controls

- CV's of the fellows
- Contracts: Full time / Part time ? (financial impact)
- Required work experience and mobility rules of candidates: not have resided in the country of the host organisation for more than 12 months in the 3 years immediately prior the reference date (exception in the Annex 1);
- Financial Agreements : contracts and payments made to the researcher;
- Evidence of the presence of the fellows (Lab book, attendance list, conference abstract, library records, travel expenses, diplomas, publications...

Please inform us about any contractual changes – e.g. part-time contracts need to be accepted by EC.

Please inform us about any planned secondments or external research activities

Grant Agreement (GA): Article 34 "Ethics"

34.1 **General obligation** to comply with ethical principles

PSI-FELLOW postdocs must **carry out the action in compliance with:**

- (a) **ethical principles** (including the highest standards of research integrity
 - as set out, for instance, in the European Code of Conduct for Research Integrity
 - and including, in particular, avoiding fabrication, falsification, plagiarism or other research misconduct), and
- (b) **applicable** international, EU and national **law**.

The PSI-FELLOW postdocs must ensure that the activities under the action have an exclusive focus on civil applications.

If PSI breaches any of these obligations under this Article, **the EU grant may be reduced** (see Article 41) **or terminated** (see Article 48).

Please attend the integrity courses provided by the PSI-Bildungszentrum (see list of courses and events)

Grant Agreement (GA): Article 34 "Ethics"

34.2 Activities raising ethical issues

Before the beginning of an activity raising an ethical issue, each PSI-FELLOW postdoc must have obtained:

- a) Any ethics committee opinion required under national law and
- b) Any notification or authorisation for activities raising ethical issues required under national and/or European law needed for implementing the action tasks in question.

Please inform us about any ethical issues related to your work and submit us the written notification or authorization for these activities.

Horizon 2020 Ethics Documents

- **Participant Portal H2020 Ethics section:**
http://ec.europa.eu/research/participants/docs/h2020-funding-guide/cross-cutting-issues/ethics_en.htm
- **Ethics issues Self-Assessment Guidance:**
http://ec.europa.eu/research/participants/data/ref/h2020/grants_manual/hi/ethics/h2020_hi_ethics-self-assess_en.pdf
- **Link to the Ethics Issues Table template:**
http://ec.europa.eu/research/participants/data/ref/h2020/grants_manual/hi/ethics/ethics-eit_en.pdf
- **H2020 Online Manual:**
http://ec.europa.eu/research/participants/docs/h2020-funding-guide/cross-cutting-issues/ethics_en.htm

- Each PSI-FELLOW postdoc must **disseminate** its results
- PSI-FELLOW may choose together with their supervisors the form of dissemination:
 - Website
 - Presentation at a scientific conference
 - Peer reviewed publication (...)
 - others

Open access to scientific publications

PSI-FELLOW postdocs must ensure open access

to all **peer-reviewed scientific publications** relating to his/her results.

- **Open access publishing** (also referred to as 'gold' open access) means that an article is immediately placed in open access mode (on the publisher/journal website).
- **Self-archiving** (also referred to as 'green' open access) means that a published article or the final peer-reviewed manuscript is archived (deposited) in an online repository (e.g. <https://arxiv.org/>) before, alongside or after its publication. If this route is chosen, PSI-FELLOW postdocs must ensure open access to the publication via the repository **within the embargo period of 6 months of publication**.
- PSI-FELLOW postdocs ensure open access — via the repository — to the bibliographic metadata that identify the deposited publication.

The bibliographic metadata must be in a standard format and must include all of the following:

- the terms "Marie Skłodowska-Curie Actions";
- the project name (**MSCA-COFUND**), acronym (**PSI-FELLOW-II-3i**) and grant number (**No 701647**);
- the publication date and length of embargo period;
- a persistent identifier.

Please send us a copy of the published article together with the information about the repository where open access is provided.



Choose one of the options listed below to access the PSI Digital User Office (DUO). To contact the PSI user office send your e-mails to useroffice@psi.ch.

DUO or PSI Account **PSI Account** Umbrella Account

Login with your DUO or PSI Account:

Username
smueller

Password

Login

Create a new DUO Account **Reset your DUO Password**

- Function selection
- User Menu
 - New Proposals
 - Edit Proposals
 - SLS Continuation Proposals
 - View all Proposals (PDF)
 - Resubmit Proposals
 - SySING Additional request
 - Experimental Reports
 - Publications
 - Experiment feedbacks
 - Badge & Dosimeter (new visit)
 - Planned visits
 - Account settings
 - Logout

User account: Mr. Stefan Mueller (smueller)
DUO statistics: Proposals: 7, Co-proposals: 0, Publications: 0

Proposals

Submit a new proposal
Click here to start a new proposal. At any time, you can save your input and leave from the DUO. The proposal is then in the state of being partially completed.

Submit a SLS Continuation Proposal
Click here if you want to submit a SLS continuation request for an already accepted or recently finished proposal.
Available on the following facilities: "sua...".

Edit / Delete an partially complete proposal
Click here if you want to edit or delete a partially completed proposal. A proposal is partially completed until it is submitted (submit button). From then on, the proposal is defined as completed and for any modification you need to contact the PSI user office directly.

Resubmit a proposal
Click here if you want to start the resubmission a previously refused proposal.

Additional request
Click here if you want to submit an additional request to an already submitted proposal.
Available on the following facilities: "s19g", "sua...".

Mesquik (Powder Diffraction)

Submit a Mesquik proposal
Create or submit a Mesquik proposal. MESQUIK is a Measurement Service for QMxT high quality data collection obtained by routine analyses on a limited number of samples at the Materials Science Beamline X04SA.
Please check the MESQUIK Website for more information: <https://www.psi.ch/teams/psd-mesquik>

Experiment Management

Apply for badge and dosimeter, Guesthouse reservation
Click here to apply for badge & dosimeter and optionally submit a guesthouse reservation request.

Order a Guest WiFi (WLAN) Account
Use this function to get access to the onsite WiFi network 'guset' in case your home institute does not offer VPN nor Eduroam.

Modify or cancel planned visits
Click here to modify or cancel an already submitted badge & dosimeter application or guesthouse reservation request.

Experimental accounts (E-accounts)
E-accounts are used to sign at SLS experimental workstations. Click here to list or change the password of the e-accounts associated with your DUO Account.

Your stay at PSI
Click here to visit the 'before arrival' page (opens new window).

Publications registered in DUO

Register new publication HERE

Search by parts of the title, author or doi (Example: 10.1039/np2476).

Options: Limit display to publications coauthored or submitted by user currently logged in (by default all publications are shown)
Beamline: All

Year: All

Search **Clear**

Publication	Proposal
[Details] Halstenen I, Moreau M, Chopokov RV, Christiansen E, Nord M, Vulliam PE, Grepstad JK, Holmestad R, Sebasm SM, Scholl A, Arenholz E, Folven E, Tybll T Magnetic domain configuration of (111)-oriented LaFeO ₃ epitaxial thin films APL MATERIALS 5 086107 (2017) doi:10.1063/1.4986555	Yes
[Details] 20121002 BIM	
[Details] Friis E, Crane Peter R, Pedersen K Sporophytes, an Extinct Genus of Laureles from the Early Cretaceous of Portugal INTERNATIONAL JOURNAL OF PLANT SCIENCES 000 (2017) doi:10.1093/ijps/000	Yes
[Details] 20160140 TOMCAT	
[Details] Frinzo S, Wintz S, Kirk E, Suzaka AK, Gliga S, Wohnerter P, Zeissler K, Raabe J Control of the gyration dynamics of magnetic vortices by the magnetostatic effect PHYSICAL REVIEW B 96 054438 (2017)	Yes
[Details] 20161229 20160048 3701 6315 PolLux LMN LMX LSC PSI-Follow-1	
[Details] Cavazzoni D, Grossi G, Lovati E, Vallese F, Montanari B, Botchi A, Zanotti G, Ottoneo S A family of archaic-like carbonic dehydrases preferentially expressed in the symbiotic phase of the mycorrhizal fungus <i>Tuber melanosporum</i> . Scientific Reports 7 7828 (2017) doi:10.1038/s41598-017-08007-9	
PXII	

Function selection

Publication control

- Journals
- Publications
- rob.org Import
- Import**
- Check doubles
- Exports
- Logout

Function selection

Publication control

- Journals
- Publications
- rob.org Import
- Import
- Check doubles
- Exports
- Logout

Function selection

User Menu

- New Proposal
- Edit Proposals
- SLS Continuation Proposals
- View all Proposals (PDF)
- Resubmit Proposals
- SySING Additional request
- Experimental Reports
- Publications
- Experiment feedbacks
- Badge & Dosimeter (new visit)
- Planned visits
- Account settings
- Logout

Publication Import

1 Search 2 Import 3 Connect 4 Upload

Look up your publications (your query is sent to doi.org or Web of knowledge™)

10.1016/0013-4686(94)81511-4
Switch to multiple DOI input mode.

Submit search **Clear form**
Skip this step (manual import)

Publication Import

1 Search 2 Import 3 Connect 4 Upload

Result from search

Journal	Already in DUO ?
Miller S, Stribel K, Haas O LaO ₂ CoO ₄ CoO ₃ : a stable and powerful catalyst for bifunctional air electrodes Electrochimica Acta 38 1861 (1994) doi:10.1016/0013-4686(94)81511-4	✓ No

(1 records)

Import/Update all **Change search** **Done**

Publication Import

1 Search 2 Import 3 Connect

The Publication

Miller S, Stribel K, Haas O
LaO₂CoO₄CoO₃: a stable and powerful catalyst for bifunctional air electrodes
ELECTROCHIMICA ACTA 38 1861 (1994)
10.1016/0013-4686(94)81511-4
DUO Publication-id: 17934

Connect the publication-authors with registered DUO users

Authors	Hide	DUO Account	Department	Laboratory	Kostenstelle
Miller S		Stefan Mueller, Paul Scherrer Institut		STN	57N-Staff 6000
Stribel, K		None of them			
Haas, O		Otto Haas, Paul Scherrer Institut			

Link this publication with proposals, beamlines/instruments and laboratories

- Proposals Show
 - SLS Beamlines Show
 - SING Instruments Show
 - SyS Instruments Show
 - Particle Physics Show
 - Center for Proton Therapy Show
 - SwissFEL Show
 - Laboratories Show (1 item selected)
 - PSI Groups (Kostenstellen) Show (1 item selected)
 - Machine related R&D Show
 - Use of non-PSI facilities Show
 - Funding programmes Hide
 - PSI-Follow-1 PSI-Follow-2
- Import more** **Done**

Bulk Import/Update all 1 publications

Submitter of the publication: Mr. Stefan Mueller
Change

Select the flags for all publication

<input type="checkbox"/> SLS Beamline	<input type="checkbox"/> IR	<input type="checkbox"/> MS Powder	<input type="checkbox"/> PEARL	<input type="checkbox"/> FXII	<input type="checkbox"/> SIS-Liner
<input type="checkbox"/> ADDRESS-IRIX3	<input type="checkbox"/> IR-Laser-Lab	<input type="checkbox"/> MS-Surf-Diff	<input type="checkbox"/> PEARL-Consortium	<input type="checkbox"/> FXIII	<input type="checkbox"/> Super-XAS
<input type="checkbox"/> ADDRESS-SIA-APPES	<input type="checkbox"/> LUXS	<input type="checkbox"/> MS-Tens	<input type="checkbox"/> PHEMOS	<input type="checkbox"/> GEM	<input type="checkbox"/> TOMCAT
<input type="checkbox"/> CI	<input type="checkbox"/> Micro-XAS	<input type="checkbox"/> NanoXAS	<input type="checkbox"/> PolLux	<input type="checkbox"/> SIS	<input type="checkbox"/> VUV
<input type="checkbox"/> GEMAS	<input type="checkbox"/> Micro-XAS-FEMTO	<input type="checkbox"/> NAPP	<input type="checkbox"/> PolLux-NanoXAS	<input type="checkbox"/> ALI	<input type="checkbox"/> PS-Cyphos
<input type="checkbox"/> Diagnostics	<input type="checkbox"/> MS	<input type="checkbox"/> Optics	<input type="checkbox"/> FX	<input type="checkbox"/> SS-HPES	<input type="checkbox"/> XTreme

SING Instruments Show

SyS Instruments Show

Particle Physics Show

Center for Proton Therapy Show

SwissFEL Show

Laboratories Show

PSI Groups (Kostenstellen) Show

Machine related R&D Show

Use of non-PSI facilities Show

Funding programmes Hide

PSI-Follow-1 PSI-Follow-2

Submit **Cancel**

Financial support for participation at conferences and secondments

Per fellow-year in CHF (average values, exchange-rate 1.09)	PSI Supervisor / Divison	PSI-FELLOW-II	Total
Salary & Mobility Allowance	66'477 (60%)	44'318 (40%)	110'795
Travel	1'970 (60%)	1'314 (40%)	3'284
Research costs	4'597 (100%)	-	4'597
Total	73'044 (62%)	45'632 (38%)	120'646 (100%)

- Please send us for signature the “Dienstreiseantrag” prior to the trip.
- PSI-FELLOW will overtake 40% of the costs per “Dienstreise” up to max. 1314 CHF per year.

- Participate in our courses and events
- Acknowledgement text in publications: “This project has received funding from the European Union’s Horizon 2020 research and innovation programme under the Marie Skłodowska-Curie grant agreement No 701647”.
- Provide open access to your publications, make a DUO-entry and send us a copy of your publication
- Inform us about any contractual change(s)
- Inform us about any ethical issues related to your work
- Inform us about planned secondments
- Send us the “Dienstreiseantrag” for signature prior to the “Dienstreise”

We are your partner – please stay in contact with us.

We are looking forward collaborating with you!

***Thank you very much
for your attention!***

Stefan Müller
stefan.mueller@psi.ch

Daniela Jahns
daniela.jahns@psi.ch

Nothing in life is to be feared
just **understood**.

- Marie Curie

