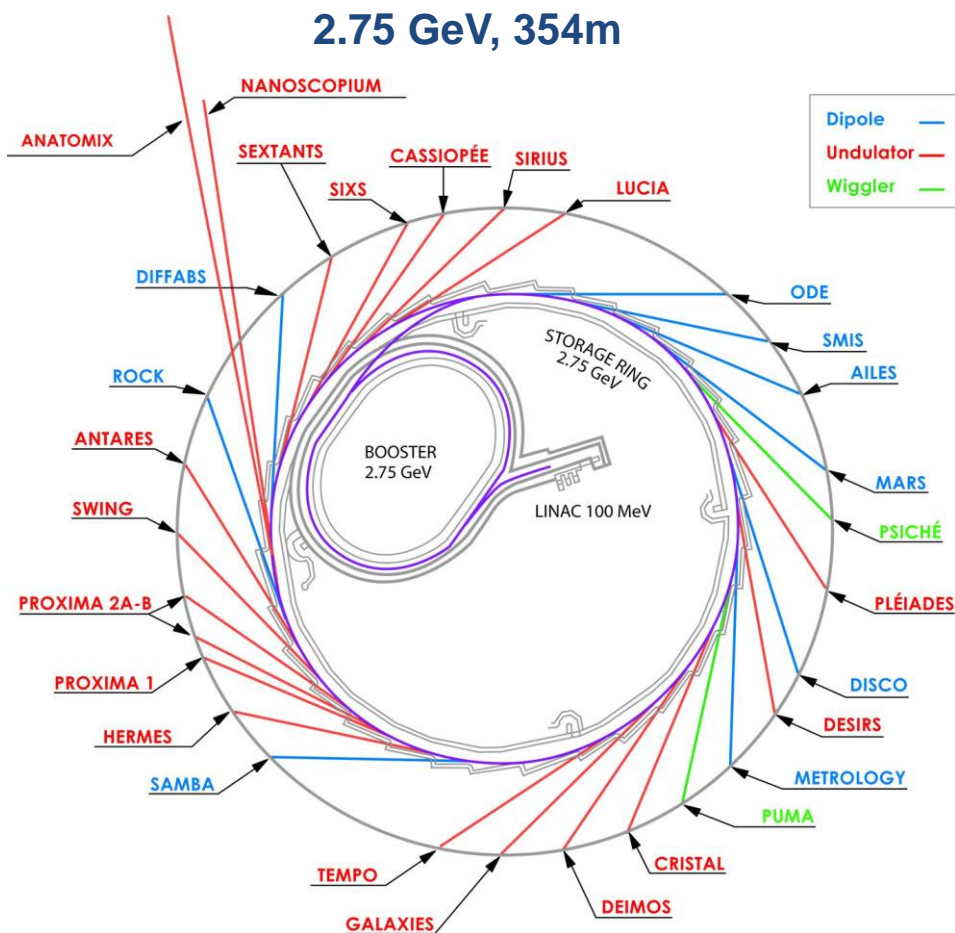




Welcome to SOLEIL

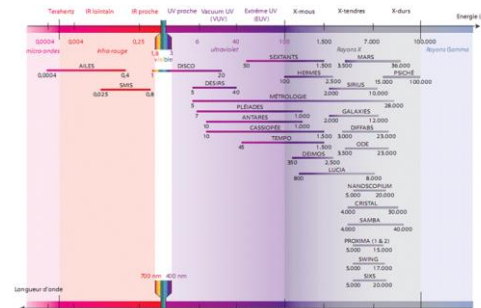




■ 29 Beamlines :

- ✓ 26 built in 2 phases; then 3 on project funding.
- ✓ 24 on insertion devices; 5 on bending magnets.

■ 9 orders of magnitude in energy:



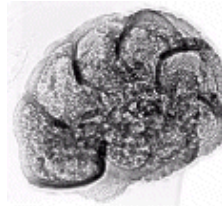
- **Support laboratories in 5 areas:** Biology (2), Chemistry (2), Surface Science, High pressure, Microfluidics.

~1200 proposals per year : ~500 accepted ;
 2391 unique users in 2017 from 880 laboratories (~ 10000 users from 2200 laboratories since 2008); ~ 1/3 foreign users

2017



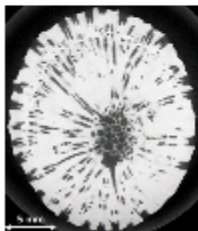
Fast multimodal 3D imaging, ptychography
High spatial resolution and analytical sensitivity



2018



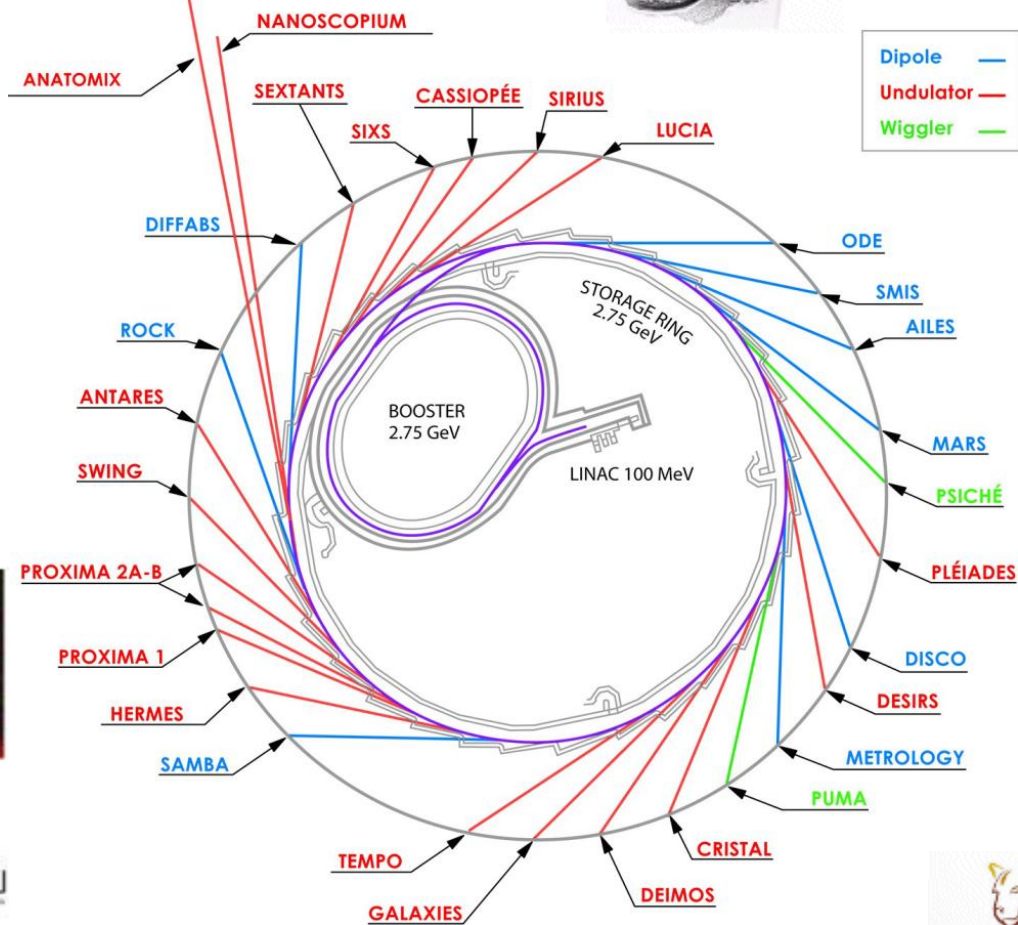
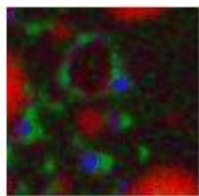
Parallel beam
microtomography
TXM



2017



STXM + PEEM
14 x 3.5 μm^2
 10^{12} - 10^{13} Phs/s
Resolving power $> 10^4$
Sub-10nm resolution
(C. David)



2018






Partnerships

French Universities:







Focused Partnerships:






ac-versailles.fr

France	109
Belgium	1
Brazil	1
Canada	2
China	1
Europe (out of H2020 projects)	4
Italy	1
Japan	2
Poland	2
UK	5
USA	2
Sweden	1
	131



European framework programs (FP7, H2020)





National Grants



- Collaborative Research Funding
- EquipeX: NanoimagesX, ROCK, Attolab

Regional Funding Programmes





- DIMs : SIRTEQ, Poreux, MAP
- Labex: PALM, NanoSaclay, MATISSE, CHARMMAT, Michem
- Idex: IRS Paris Saclay

Collaboration Contracts



TOWARDS NEW INTEGRATED INFRASTRUCTURES

- Transnational Acces
- Joint Research Activities
- Networking Activities



Co-funded by the Horizon 2020
Framework Programme of the European Union

**COORDINATION AND
SUPPORT ACTIONS
FOR NEW
INFRASTRUCTURES**



LEAPS



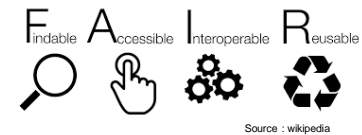


Data Management

→ Associating Users Representatives : ORGUES Association and two CNRS experts in scientific data management

→ Updating the SOLEIL Data Policy :

- ✓ *by encouraging Users and Scientists to produce FAIR data,*
- ✓ *and facilitating this with data management services for storage and retrieval of experimental data and associated metadata collected and/or stored at SOLEIL.*



→ A survey to identify the « Data Reduction and Analysis Services » essential or desirable to provide

→ Continuation / development of collaborative actions:

- ✓ *LEAPS-IT, JRA2-CALIPSOplus, ISPyB, Orange, etc.*



→ Upgrading Scientific Computing Resources:

- ✓ *On Premise Resources supplemented by Community Resources and/or other External Resources paid for use or fee → adaptation to changing needs (data production, ...)*

Due to CNRS security instructions and French Policy for the Protection of Scientific and Technical Potential: prefer external resources operated by French firms

*Based on PANDATA model and its applications by other facilities,
reorganized and completed with the help of CNRS experts*

- Curation of raw data and associated metadata: up to 5 years (striving 10 years) starting with the end of the respective beamtime; read-only ; well-defined formats (preferably Nexus/HDF5) ; DOI
- Access : will be available to registered & authorized persons via a searchable on-line catalog
- Embargo : 3+1+1 years. For longer extensions, written requests submitted to SOLEIL validation
- After the embargo period : raw data and metadata will be open access
- CC-BY license for data held in long-term storage

Precisions:

- Ownership: public research / proprietary research / specific agreements
- Roles and responsibilities: Users, SOLEIL

Requests and recommendations to experimental team:

- Establish a Data Management Plan, ensure completeness of metadata, ...

Intention to provide means:

- For the capture of metadata that are not automatically captured,
- For reduction and/or processing of raw data

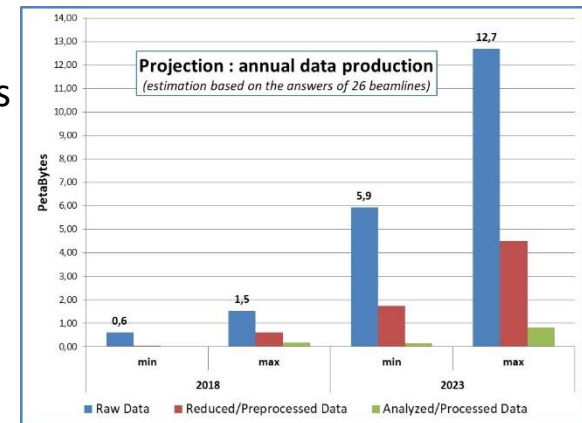
Precautions:


- Long-term storage could be sub-contracted
- In case of interruption / limitation / termination of services
- SOLEIL not liable for the consequences of any interpretation of the data ; etc.

It comes out from 26 beamlines (off 29) that:

- ➔ More than half of them using / foreseeing high throughput imaging techniques : 2D scanning / full field imaging, ptychography, tomography, electron microscopy...
- ➔ Strong need for on-line data reduction: to ensure data quality before continuing long acquisition processes and to provide users with reduced data ready to be analysed.
- ➔ Demands for more automation of on-line data reduction and analysis sequences
- ➔ On-site data analysis : more and more necessary
- ➔ Remote data analysis for reprocessing purposes: need expressed by half of BL Scientists on behalf of their Users
- ➔ Support requested by more than 80% of the BL scientists : programming skills, sw installation, application optimization, code parallelization, ...

- ➔ Towards very high data production: at least 6PB/year in 5 years
 - New Detectors
 - Flyscan acquisition technique
- ➔ Towards more and more remote access experiments, enabling a more efficient beamtime scheduling



- **Renew Data Infrastructure by taking into account the future HIGH data volume and throughput :**
 - ❖ On-premise Data Infrastructure continuous upgrade: primary storage, network, on-line processing
 - ❖ Off-site Scientific Computing Resources:
 - ✓ extension of our partnership with the CCRT (HPC centre) for off-line processing,
 - ✓ initiating explorations to facilitate data processing by the Users in the cloud
 - ✓ initiating a Pilot Project with the support of CNRS (and French Ministry of Higher Education and Research): in a first time for long-term data curation
 - ❖ Data Transfer: initiating a feasibility study  globus
- **Contribute to the completeness of metadata:** capture tool, ...
- **Ease Data Access and reuse:** on-line catalog, data embargo & long-term duration management, DOI and license attribution, ...
- **Support Users:** a Data Management Plan template, ...
- **Soon, a team dedicated to data analysis, relying on a commission of SOLEIL scientists representing the different experimental techniques and on collaborations/partnerships**



Logistics Information



- ❖ Badge and Wifi Access code: in your individual envelope
- ❖ Lunches at SOLEIL restaurant: tickets will be given before lunch
Take a tray to the self; a room is reserved for us
- ❖ Dinner of August 22 at 7:00 pm at SOLEIL restaurant (same room);
We will call taxis to go back to the Hotel d'Orsay or RER B station Le Guichet, after dinner.
- ❖ Dinner of August 23 at 8:00 pm at Le Gramophone Restaurant, 27 boulevard DUBREUIL, 91400 ORSAY, tel: +33 1 69 28 42 15
11 minutes walk from the Hotel d'Orsay : a plan will be given.





IT & Controls staff



juin 2018

