

WIR SCHAFFEN WISSEN – HEUTE FÜR MORGEN



Information: 19 September 2019

PSI-FELLOW II-3i – Welcome Meeting

Marie Skłodowska-Curie Action
Horizon 2020 COFUND Program

Stefan Müller & Daniela Jahns
Program Management Unit
Paul Scherrer Institute

Marie Curie

1867 - 1934

- Marie was awarded the Nobel prize in physics in 1903 for her work with X-rays
- She was also awarded the Nobel prize in chemistry in 1911 for her work with radium

Another highlight of Marie's life

During WWI she brought X-rays to the field to treat soldiers





Dr. Jochen Bihn

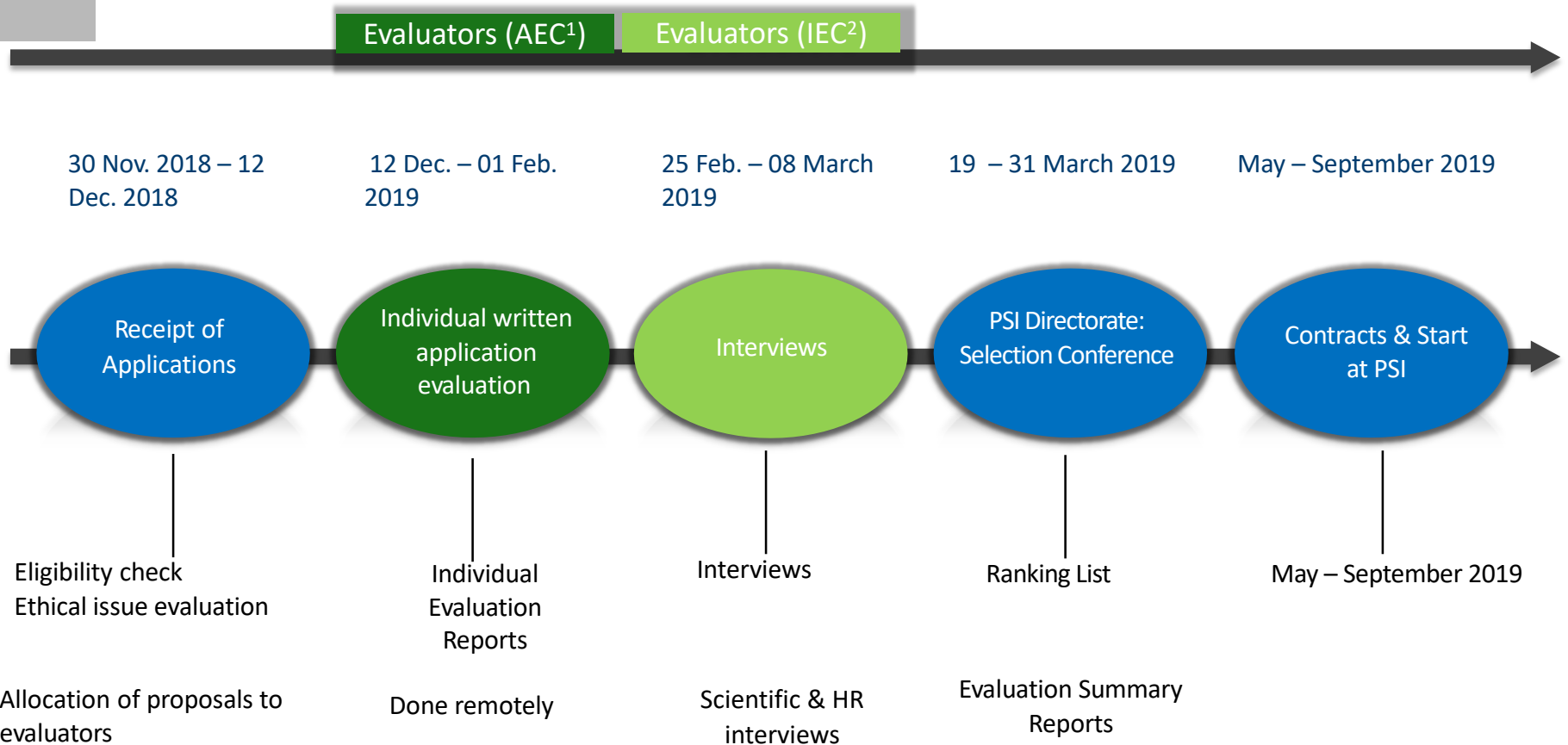
t +41 58 765 5228

jochen.bihn@lib4ri.ch

We provide services and assistance on all aspects of the scientific publication process. We curate the institutional bibliography of Eawag, Empa, PSI and WSL and manage the institutional repository DORA. Other services include the administration of the Open Access publishing fund (at Eawag and Empa) as well as advice and trainings on various topics of scholarly communication.

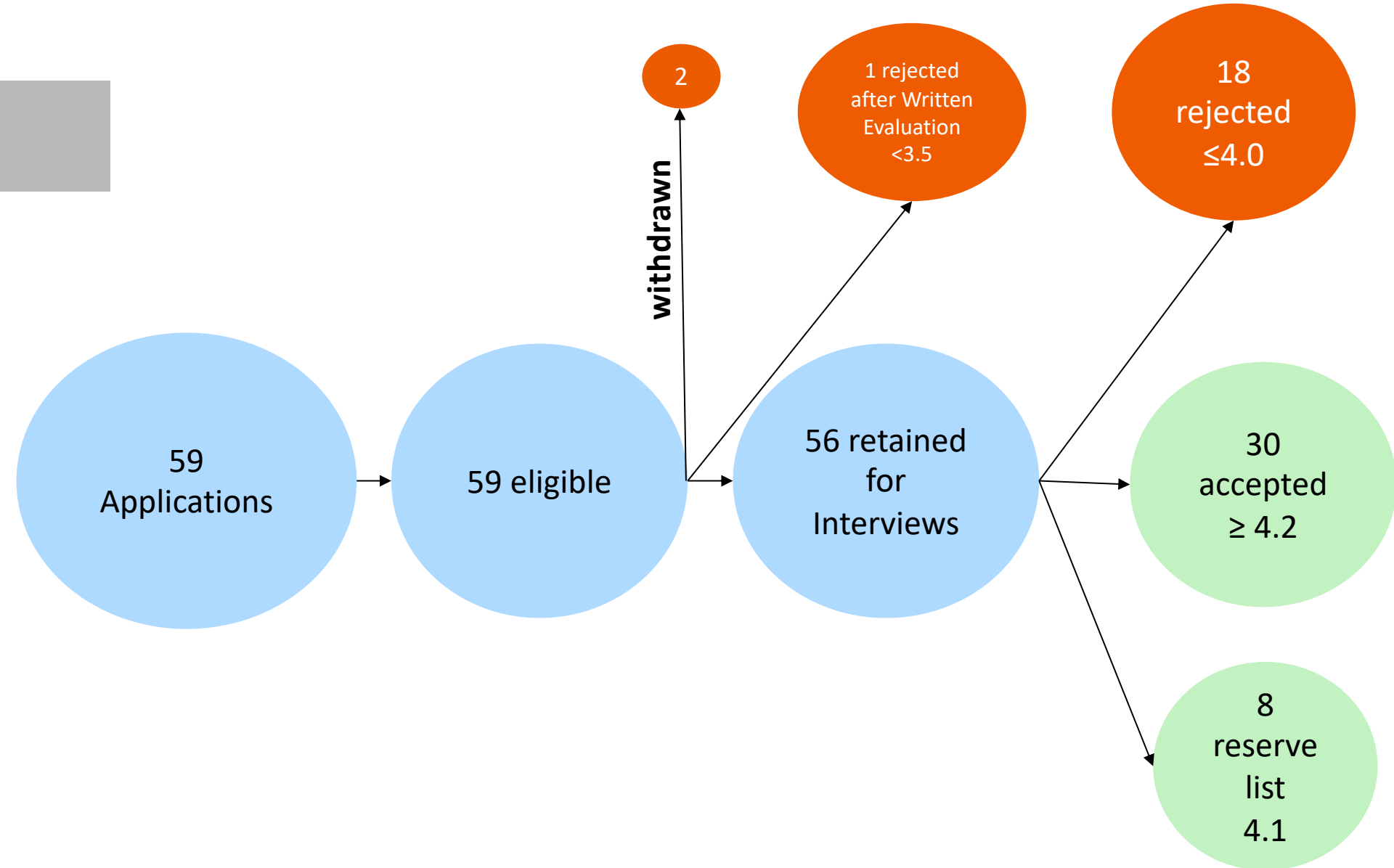
Overview Selection Process:

PSI-FELLOW-II-3i Evaluation Process

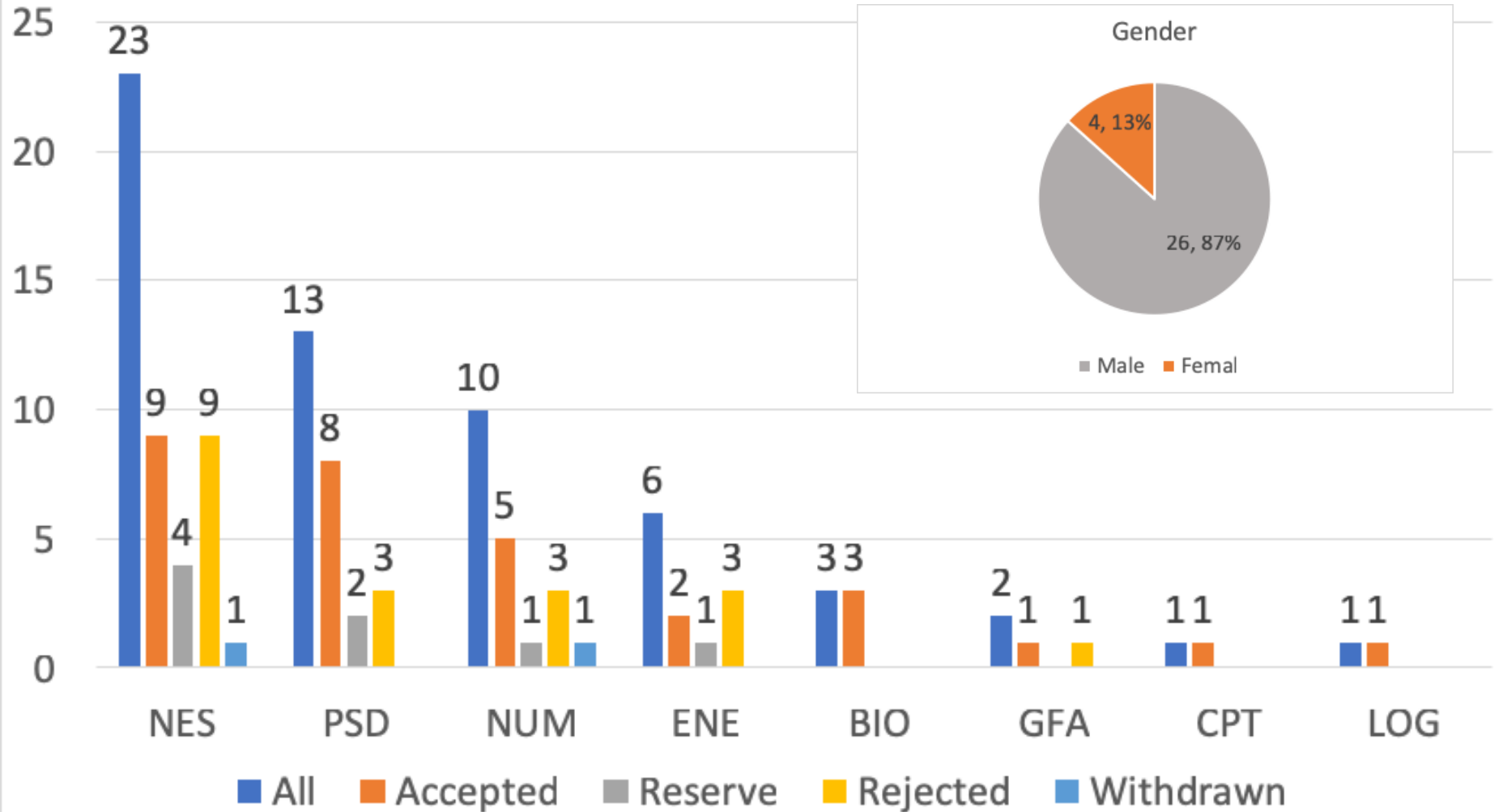


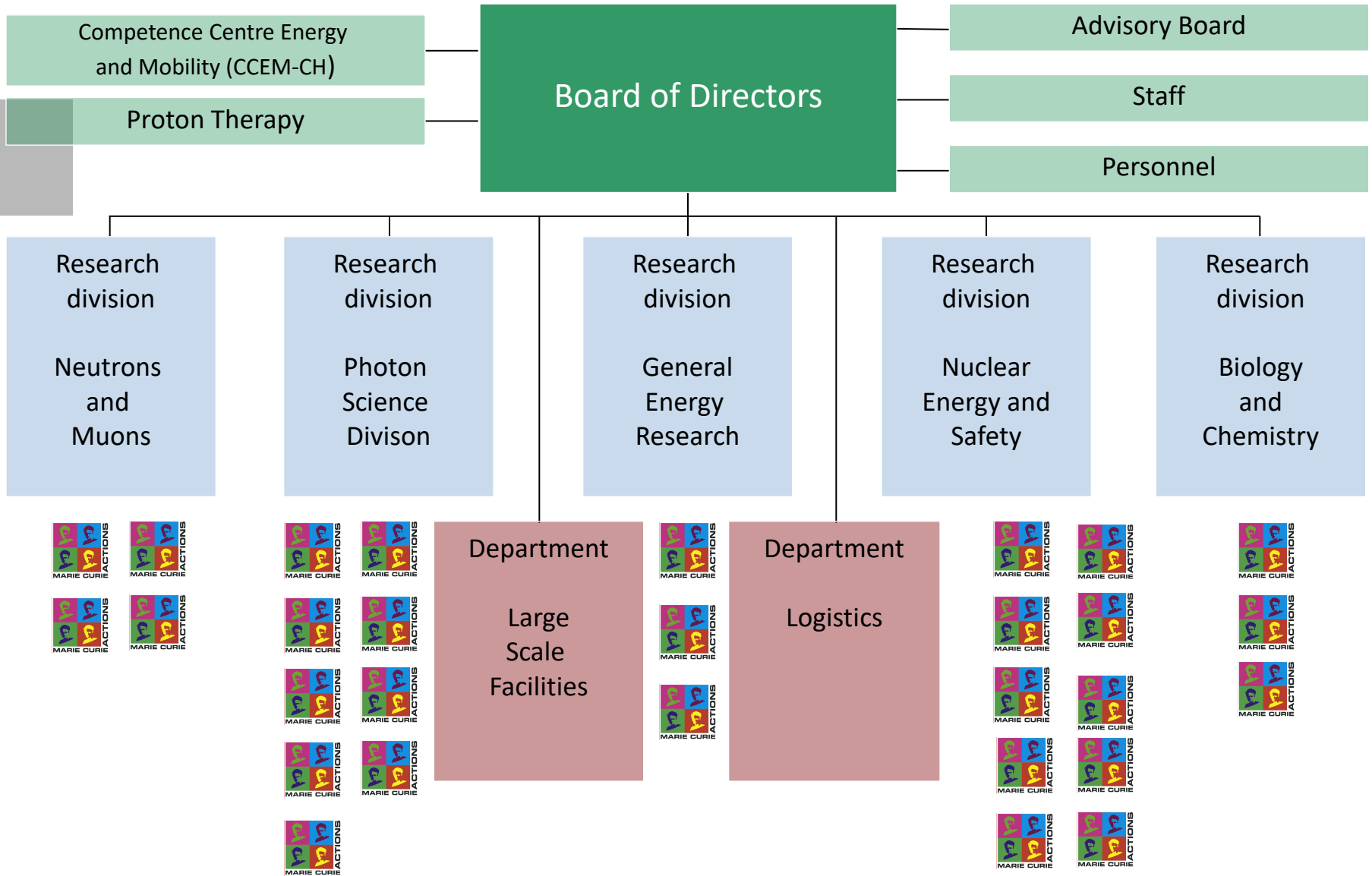
¹AEC: Application Evaluation Committee

²IEC: Interview Evaluation Committee



Outcome of the Evaluation





PSI-FELLOW-II-3i / Partner Organisations

Offering additional hosting opportunities for secondments



Company	Short description	Collaboration (incl. area)
ABB Asea Brown Boveri Ltd.	Multinational (robotics, power and automation technology)	Yes – new energy systems and associated materials
Ampegon AG	Specialized in RF amplifiers and high voltage power supplies	Yes- amplifier systems and modulators
F Hoffmann-La Roche AG	Multinational Pharma and biotechnology	Yes - long-term collaboration on protein crystallography
IBM Schweiz AG	Multinational IT	Yes – long term in various nanoscale science
Novartis International AG	Multinational Pharma and Biotechnology	Yes – long term collaboration in protein crystallography
Swiss Neutronics AG	PSI Spin-off for optical solutions for neutron and synchrotron worldwide.	Yes – specially SINQ (Neutron-Spallation-Source)
VDL Enabling Technologies Group	Global operations with track record in semiconductor capital equipment, thin film deposition for photovoltaic solar, analytical and medical systems.	Yes – high precision projects, e.g. X-band radio-frequent cavities and accelerator technologies, e.g. free-electron lasers.

academic secondment partner organisations

Other facilities	Description / Key facts
Institut Laue-Langevin (ILL)	History of on-going exchange since beginning of neutron scattering exp. in Switzerland
Deutsches Elektronen-Synchrotron (DESY)	Various exchanges and representation on both sides in scientific advisory board activities. Latest is the AGIPD consortium for X-ray detectors for EU XFEL.
Soleil Synchrotron (SOLEIL),	Various exchanges and representation on both sides in scientific advisory board activities. Collaborations in X-ray detection for fast scanning X-ray microscopy and X-ray nano-tomography.
Max IV laboratory	New facility in 2016, but already strong collaborations in beamline design etc.
European Spallation Source (ESS)	European neutron facility under construction. Various projects including in field of neutron optics.
ELETTRA & FERMI@ELETTRA	Two photon sources. Free electron laser and electron storage ring. Traditional tight link in various common areas of interest.

Career Development Plan and Research Project

- Delivery of the Career Planning Action Plan (CPA) after the Career Development Workshop. The CDP has to be signed by the fellow, the supervisor and mentor;
- Delivery of the written research project not later than 6 months after start of the PSI-FELLOW-II-3i fellowship. The written research project has to be signed by the fellow and the supervisor;
- The status of the research project has to be discussed quarterly with the supervisor;
- Strong deviations in the research plan should be reported in writing to the Programme Management Unit (psifellow@psi.ch);

Any dissemination of results (including electronic) must

- display the EU emblem (e.g. Posters, flyers, websites, etc.) and
- include the following acknowledgement text: **“This project has received funding from the European Union’s Horizon 2020 research and innovation programme under the Marie Skłodowska-Curie grant agreement No 701647”.**

- A PSI-FELLOW postdoc must ensure **open access** (free of charge online access for any user) **to all peer reviewed scientific publications** relating to its results.
- All publications related to the funded project must be entered promptly into the Digital Object Repository at PSI (DORA PSI: <https://www.dora.lib4ri.ch/psi/>). In case of "Green Open Access" the last accepted manuscript (Postprint) must be uploaded on DORA.
- Delivery for a short scientific highlight to the PSI Program Management Unit (PMU) in preparation for a publication
- Attendance at the events, courses, and retreats, etc. announced by the PSI Program Management Unit (PMU) and stated as mandatory for the fellows
- Contributions to other program-specific activities e.g. secondments, responding to questionnaires disseminated by the PMU
- Annual reporting to the attention of the PMU

Financial support for participation at conferences and secondments

Per fellow-year in CHF (average values, exchange-rate 1.09)	PSI Supervisor / Divison	PSI-FELLOW-II	Total
Salary & Mobility Allowance	66'477 (60%)	44'318 (40%)	110'795
Travel	1'970 (60%)	1'314 (40%)	3'284
Research costs	4'597 (100%)	-	4'597
Total	73'044 (62%)	45'632 (38%)	120'646 (100%)

- Please choose PSP 5204.60000.160.09 when filling in the digital travel request.
- Cost items up to 40% of the total costs per travel request and max. 1314 CHF per year can be claimed in total.

- Participate in our courses and events
- **Acknowledgement text in publications:** “This project has received funding from the European Union’s Horizon 2020 research and innovation programme under the Marie Skłodowska-Curie grant agreement No 701647”.
- Provide open access to your publications, make a DORA-entry and send us a copy of your publication
- Inform us about any contractual change(s)
- Inform us about any ethical issues related to your work
- Inform us about planned secondments
- Use our PSP in digital travel request (max. 40% of the costs up to 1314 CHF/year)

We are your partner – please stay in contact with us.

We are looking forward collaborating with you!

Horizon 2020 Ethics Documents

- Participant Portal H2020 Ethics section:
http://ec.europa.eu/research/participants/docs/h2020-funding-guide/cross-cutting-issues/ethics_en.htm
- Ethics issues Self-Assessment Guidance:
http://ec.europa.eu/research/participants/data/ref/h2020/grants_manual/hi/ethics/h2020_hi_ethics-self-assess_en.pdf
- Link to the Ethics Issues Table template:
http://ec.europa.eu/research/participants/data/ref/h2020/grants_manual/hi/ethics/ethics-eit_en.pdf
- H2020 Online Manual: http://ec.europa.eu/research/participants/docs/h2020-funding-guide/cross-cutting-issues/ethics_en.htm

***Thank you very much
for your attention!***

Stefan Müller
stefan.mueller@psi.ch

Daniela Jahns
daniela.jahns@psi.ch

Nothing in life is to be feared
just **understood**.

- Marie Curie

