



19 September 2019

## PSI-FELLOW II-3i – Welcome Meeting

Marie Skłodowska-Curie Action  
Horizon 2020 COFUND Program

Stefan Müller, Daniela Jahns  
Programme Management Unit  
Paul Scherrer Institute

PSI-FELLOW postdoc program 2019 – 2021 (Call 2018)

- **Continuous education**
- **Your scientific output and its dissemination**
- **Acknowledgement**
- **Digital travel request/Our financial contribution**
- **Mentoring**

2019	Mandatory	Registration	Dates	Additional information
Introduction to Radiation Protection and Safety at PSI for new Employees	Yes	Please read more and register	12th August, 1st October, 2nd December; 10.00 - 12.00	PSI Education Center (Room: see Infopoint at the entrance)
Strategic negotiation techniques		Please read more and register	22nd August; 08.30 - 16.30	PSI Education Center OSGA (room see Infopoint at the entrance)
Welcome Meeting, followed by a BBQ	Yes	Please read more and register	19th September; 16.00 - 19.00	Meeting: WBGB/019/BBQ: Behind OASE
Workshop "Filmmaking for Scientists"		Please read more and register	4th October, 09.30 - 17.30	PSI Education Center (Room: see Infopoint at the entrance)
Condensed Matter Retreat	Yes**	Please read more and register	29th & 30th October	Fachhochschule FHNW, Brugg
Introduction to Swiss and PSI culture		Please read more and register	5th November; 15.00 - 18.00, followed by a dinner	PSI Education Center OSGA (room see Infopoint at the entrance)
Workshop "Articles in sciences: structure and clarity"	Yes	Please read more and register	21st November; 09.00 - 17.00	PSI Education Center OSGA (room see Infopoint at the entrance)
Workshop "Publishing Research Articles: Strategies and Steps"	Yes	Please read more and register	22nd November; 09.00 - 17.00	PSI Education Center OSGA (room see Infopoint at the entrance)
Research integrity information for PhD students and postdocs	Yes	Please read more and register	12th November; 13.30 - 15.30	WHGA/001
Career planning workshop		Please read more and register here	27th November; 09.00 - 13.00	WSLA/008
PSI-FELLOW Xmas Event		Details to follow	11th December; as of 16:00	WBGB/019
Fix the leaky pipeline		Please read more	A career building program for women in science	ETH Domain's group for equal opportunities for women and men
2020	Mandatory	Registration	Dates	Additional information
Career planning workshop	Yes	Please read more and register	5th February; 09.00 - 13.00	WSLA/008

## How to register for the courses at the PSI Academy

Courses indicated with a number, e.g. course no. 933, are courses organized by the PSI Academy. For a successful registration, please proceed as followed:

Instead of using your own Cost Center (OG Unit), please use Cost Center (OG Unit): **6000**

**When using 6000, you will find PSP-ELEMENT 5204.60000.160.09** from the drop-down menu

### - ▼ PSI-interne Daten

Telefon\* 056 310

Interne Adresse  
(Gebäude/Raum)\*

Kostenstelle (OG-Einheit)\*

PSP-Element\*

# Your scientific output and its dissemination

Your scientific output during your fellowship at PSI will be reported to the EU. All of it will be collected and made available to the EU by a dissemination report.



**This is a binding part of our contract with the EU**

# Your scientific output and its dissemination



By using this link you get to a Google spreadsheet to enter all your activities



<https://bit.ly/2mcTTNz>

Please enter your scientific output below

Your acknowledgement: "This project has received funding from the European Union's Horizon 2020 research and Innovation programme under the Marie Skłodowska-Curie grant agreement No 701647".

**Asmara Teguh**

Contributions to PSI internal Seminars, Workshops, etc.

Attended European conferences (incl. Switzerland)

Attended international conferences

Given lectures and seminars universities/institutes, mentoring, supervision

Attended Schools, scientific workshops, equivalent trainings

Peer reviewed publications (Title, authors, references, DOI)

**Augustin Sven**

Contributions to PSI internal Seminars, Workshops, etc.

Attended European conferences (incl. Switzerland)

Attended international conferences

Given lectures and seminars universities/institutes, mentoring, supervision

Attended Schools, scientific workshops, equivalent trainings

Peer reviewed publications (Title, authors, references, DOI)

All your scientific output during your fellowship at PSI

**MUST** include the following **acknowledgement**:

"This project has received funding from the European Union's Horizon 2020 research and innovation programme under the Marie Skłodowska-Curie grant agreement No 701647".

# Digital travel request / yearly financial contribution from the program

When filling in your digital travel request, please choose for the 40 % funding from the program, the following PSP

Details

\*PSP 1

PSP 2

PSP 3

PSP 4



Once you are back from your business trip and claiming your expenses, you will need to do the cost splitting (60 % from your PSP and 40 % from the programs' PSP) yourself; meaning you must write it down yourself on the receipt. Afterwards, you need to upload the receipt twice. That means, the receipt needs to be assigned to each PSP.



**The idea of the mentoring scheme is that a designated mentor offers support and advice to you.**

## **The mentor is**

- *An experienced staff member of PSI*
- *Understands the internal processes*
- *Knows how to pursuing a scientif career*

**and gives you guidance in the development of expertise in new skills such as**

- *Career planning and insights into needs for next career steps*
- *Support in establishing internal scientific environment*
- *Possible first contact person in case of conflicts*

**and provides**

- *Access to new networks*
- *Increase of the Fellow postdocs' perspectives*

# The Mentoring

Your PI



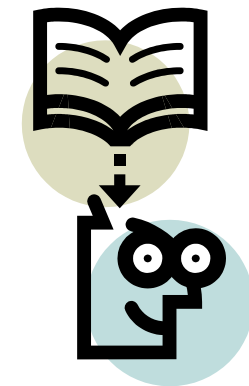
You



Your mentor



PMU PSI-FELLOW Management Unit  
Stefan Müller / Daniela Jahns



**You either choose the mentor yourself or you get an assigned mentor; please proceed as follow:**

- ❖ Talk to the person you wish to be your mentor and explain what the
- ❖ mentoring is about. Show slide no. 9.
  
- ❖ If you come to an agreement, please enter the name of your mentor
- ❖ here <https://bit.ly/2l0G7gT>
  
- ❖ If you wish to get an assigned mentor by us (the program management
- ❖ unit), then please tick the corresponding field here <https://bit.ly/2l0G7gT>

# You – the PSI-FELLOW postdocs

OE	Division	Family name	First name	Email
6312	PSD	Asmara	Teguh Citra	teguh.asmara@psi.ch
6400	PSD	Augustin	Sven Martin	sven.augustin@psi.ch
3201	NUM	Banerjee	Pulak	pulak.banerjee@psi.ch
6123	PSD	Beale	John	john.beale@psi.ch
2211	BIO	Borgna	Francesca	francesca.borgna@psi.ch
3304	NUM	Capek	Jan	jan.capek@psi.ch
4404	NES	Chen	Yanhua	yanhua.chen@psi.ch
4402	NES	Cruz Hernandez	Pablo	pablo.cruz-hernandez@psi.ch
6312	PSD	Ekahana	Sandy Adhitia	sandy.ekahana@psi.ch
4801	NES	Essafi	Karim	karim.essafi@psi.ch
5501	ENE	Giannoukos	Stamatios	stamatios.giannoukos@psi.ch
2011	BIO	Gotthard	Guillaume Cyril	guillaume.gotthard@psi.ch
4801	NES	Huang	Yi-Ping	yi-ping.huang@psi.ch
3302	NUM	Jacobsen	Henrik	
6214	PSD	Kepa	Michal Wawrzyniec	michal.kepa@psi.ch
3000	NUM	Kumar	Neeraj	neeraj.kumar@psi.ch
4702	NES	Mihalcea	Ionut	ionut.mihalcea@psi.ch
4805	NES	Muralikrishnan	Sriramkrishnan	sriramkrishnan.muralikrishnan@psi.ch
6111	PSD	Novak	Vladimir	vladimir.novak@psi.ch
6412	PSD	Rajyaguro	Ashish	ashish.rajyaguro@psi.ch
6218	PSD	Ravnik	Jan	jan.ravnik@psi.ch
2011	BIO	Rodrigues	Matthew Joseph	matthew.rodrigues@psi.ch
4802	NES	Schusteritsch	Georg	georg.schusteritsch@psi.ch
4501	NES	Siskos	Eleftherios	eleftherios.siskos@psi.ch
5411	ENE	Stefancic	Ales	ales.stefancic@psi.ch
4603	NES	Suman	Siddharth	siddharth.suman@psi.ch
6400	PSD	Sun	Zhibin	zhibin.sun@psi.ch
4801	NES	Tiwari	Apoorv	apoorv.tiwari@psi.ch
5504	ENE	Wang	Dongyu	dongyu.wang@psi.ch
6511	PSD	Hellmann	Sebastian	sebastian.hellmann@psi.ch