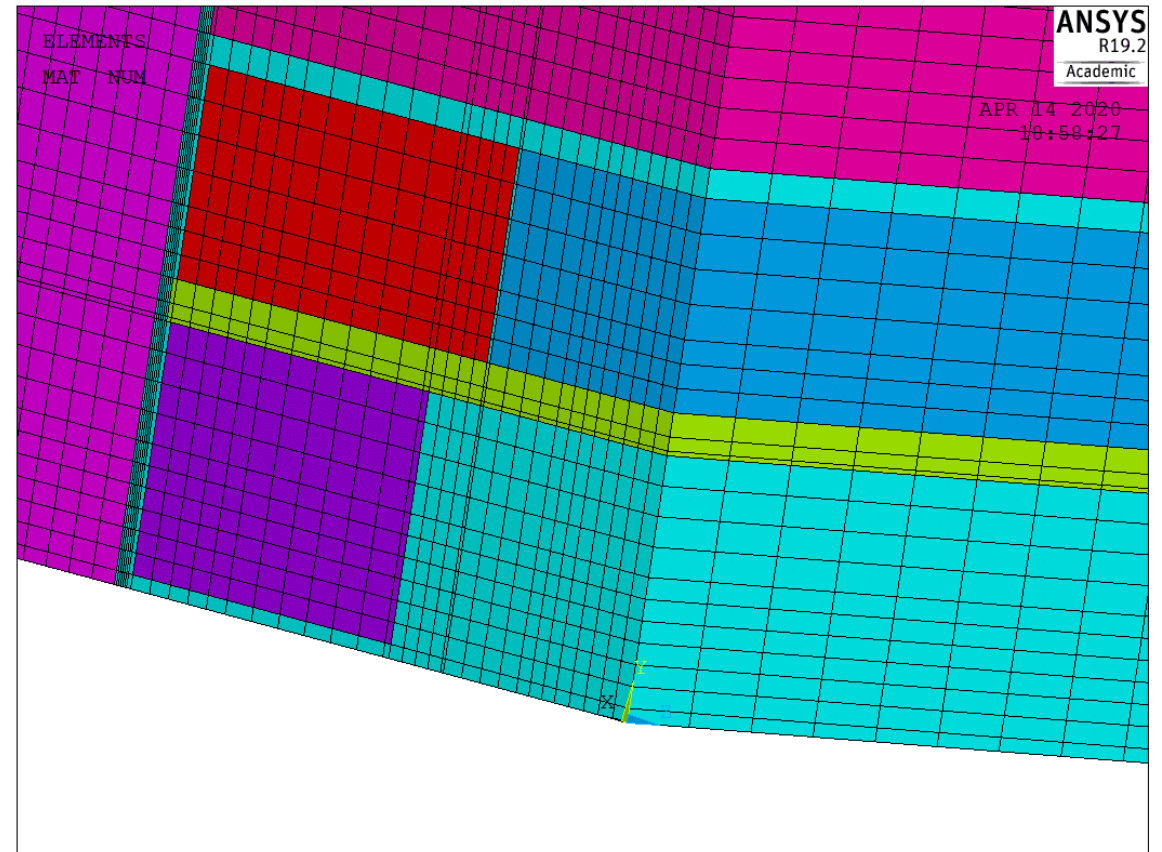
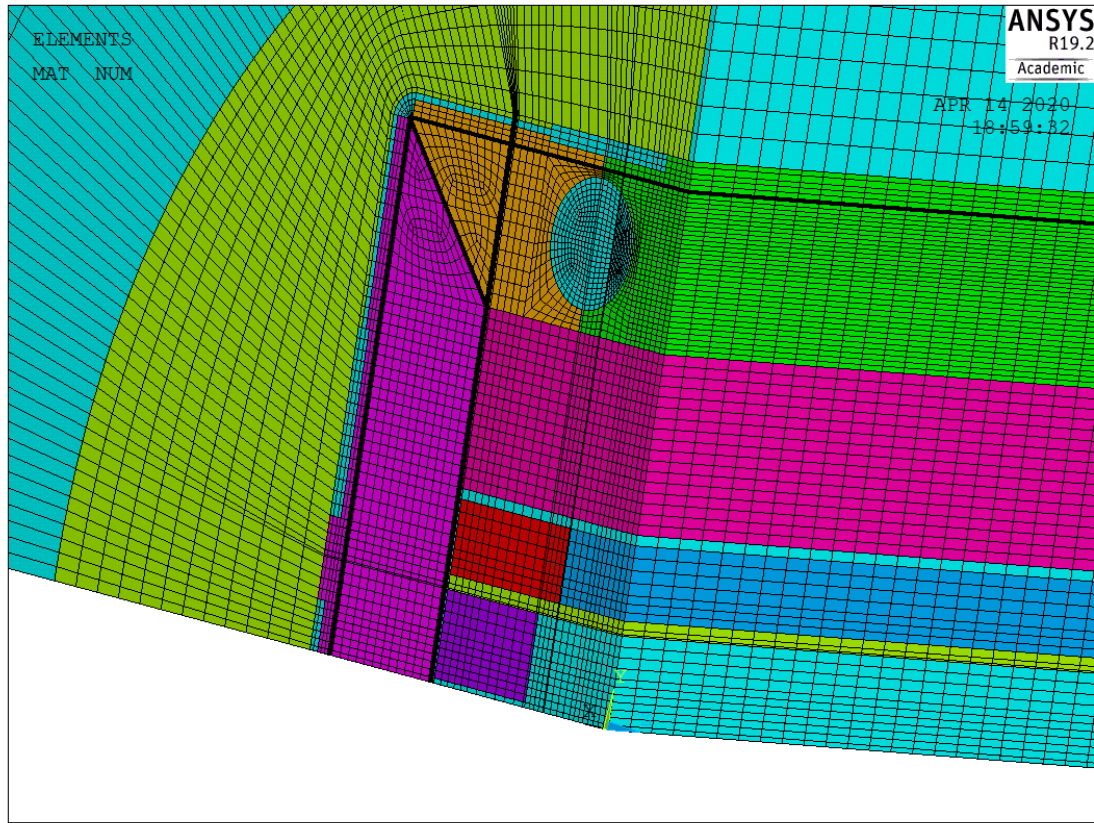


Eddy currents analysis @ quench (Steel shell)

P. Testoni

08 May 2020

Finite element model

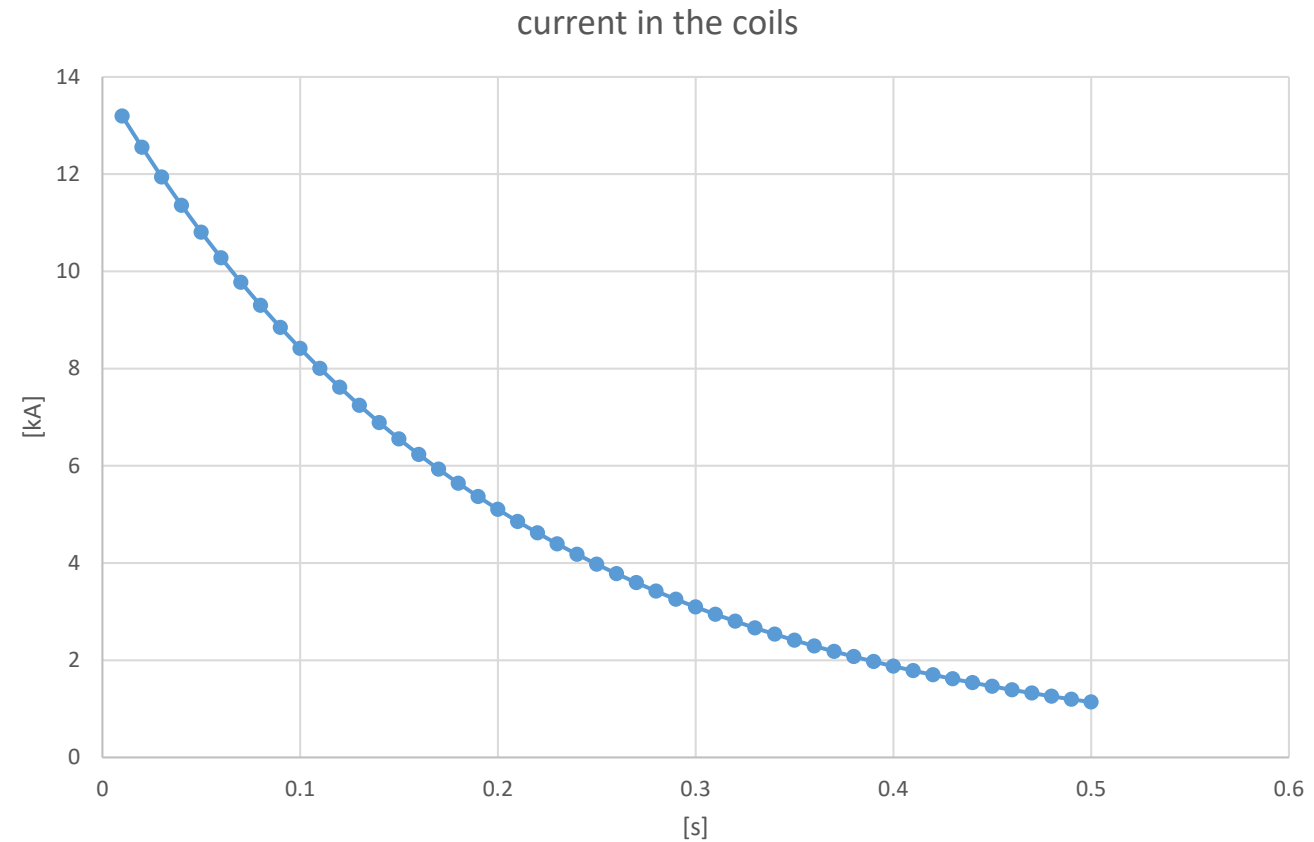


Formulation

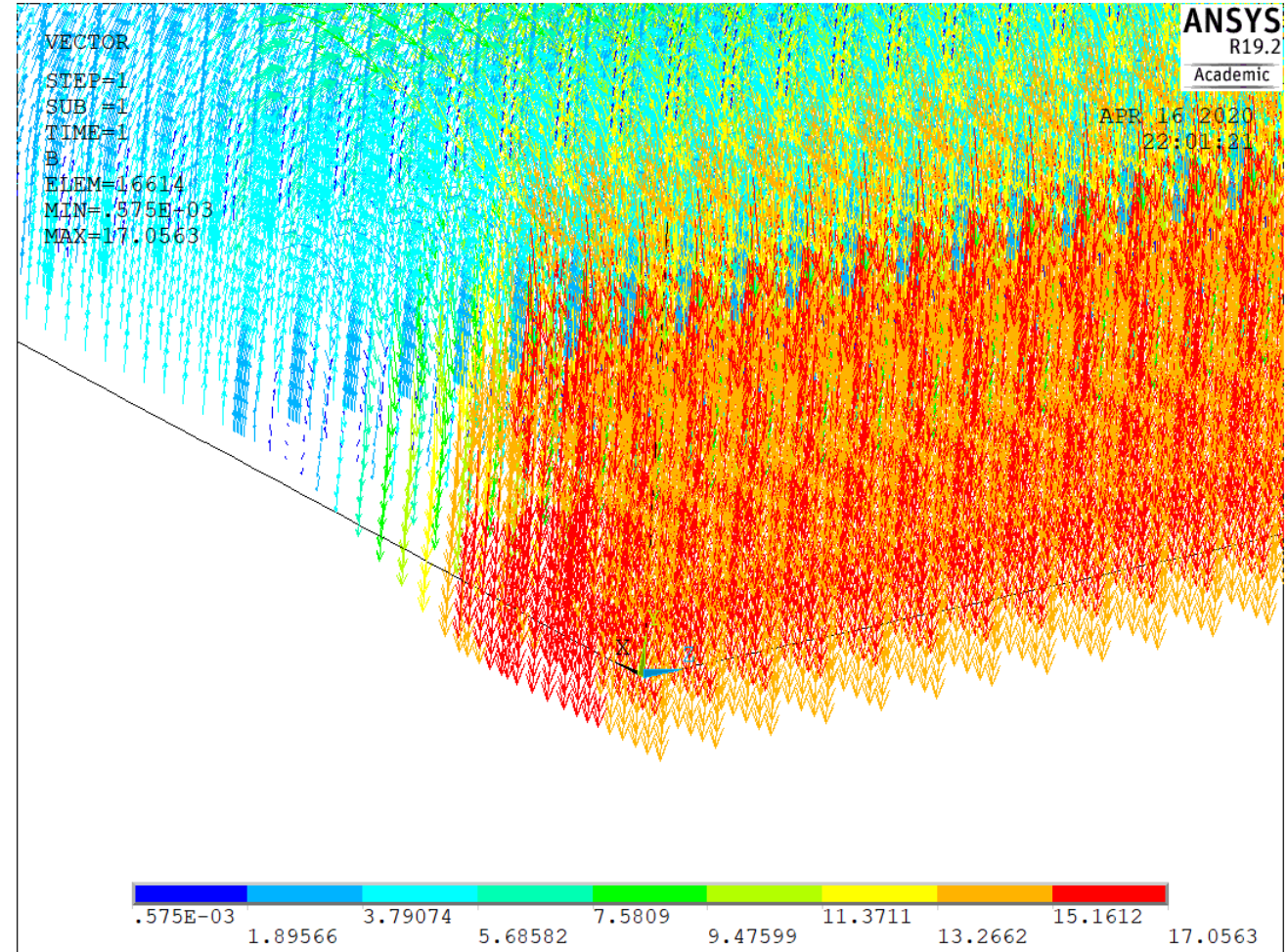
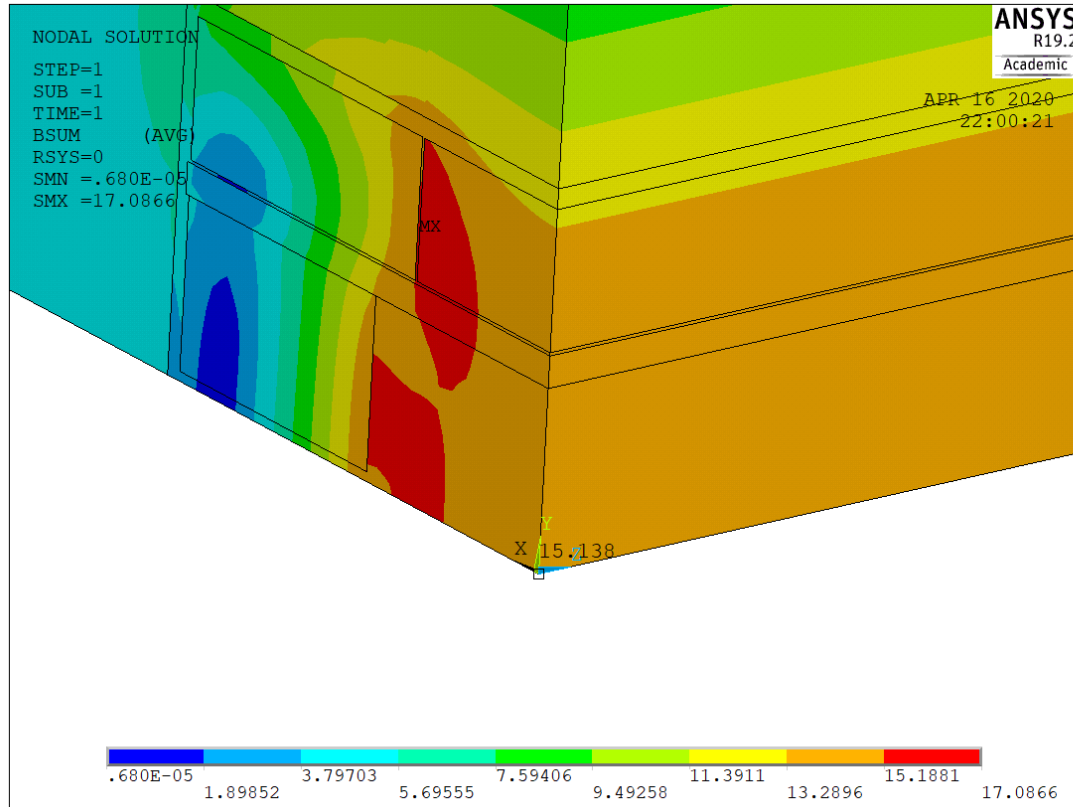
ANSYS element SOLID236 is used. It is an edge element and it allows to appropriately manage eddy current analyses with non linear materials.

Loading

Current in the coils is varied with an exponential law and 0.2s time constant

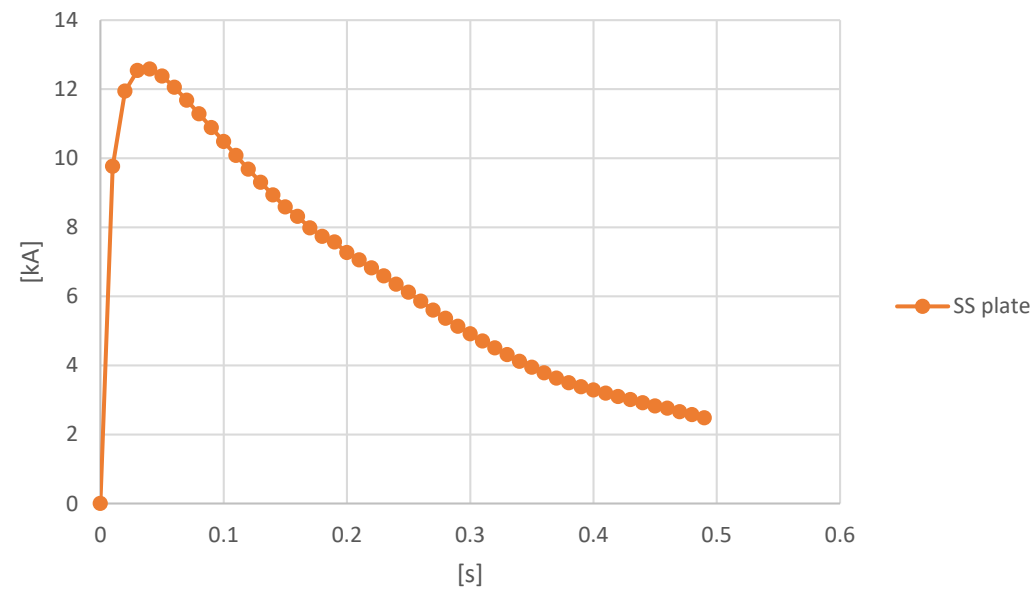
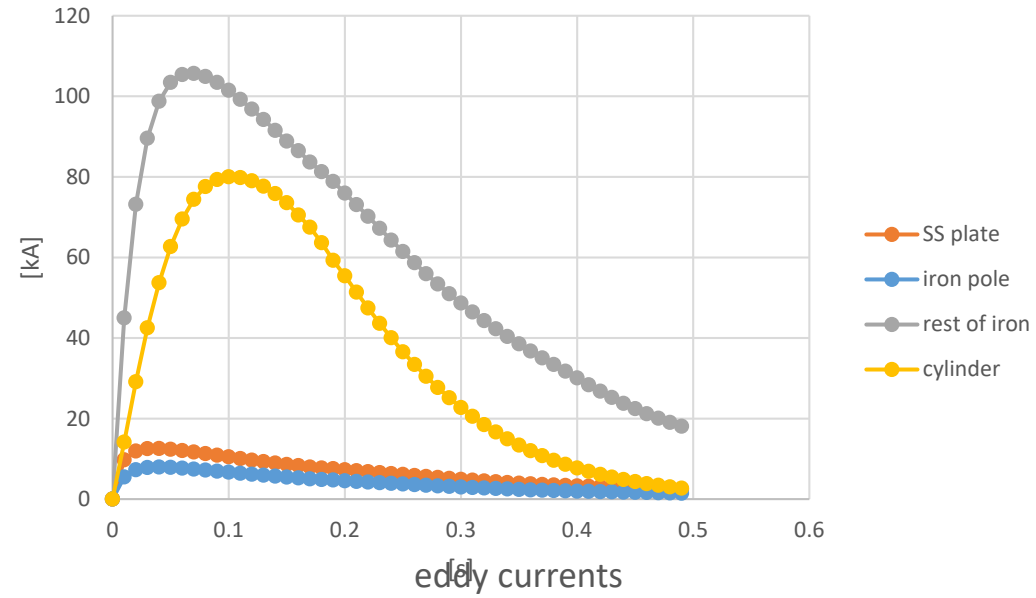


Initial conditions

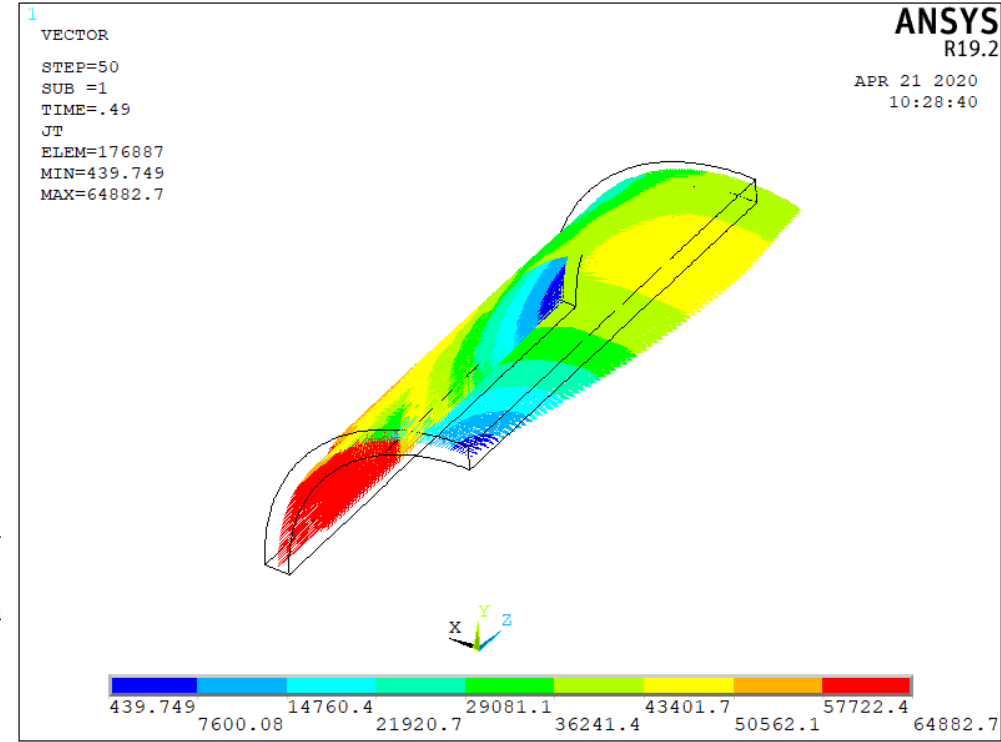
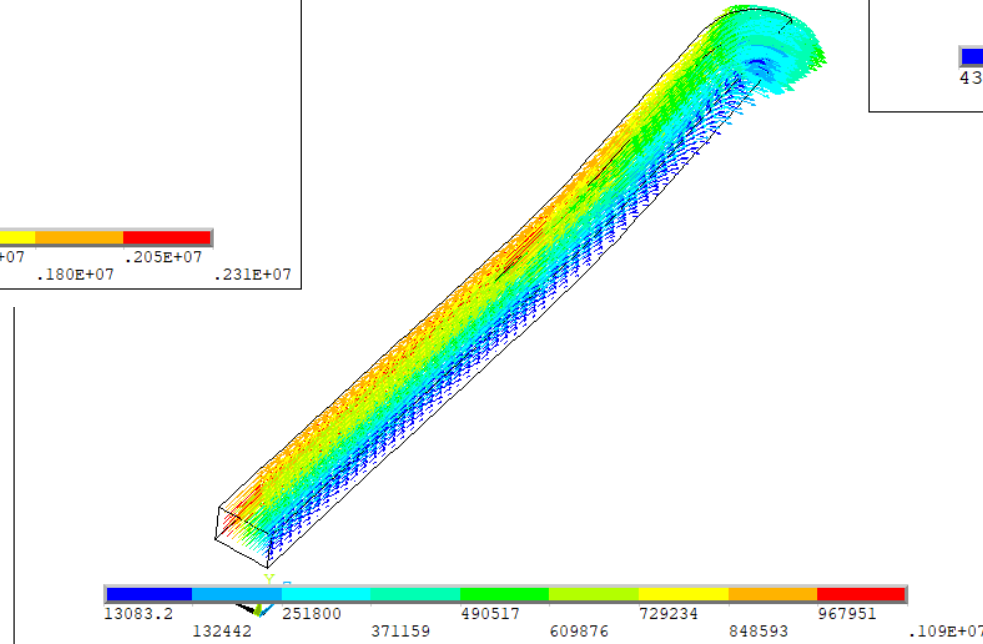
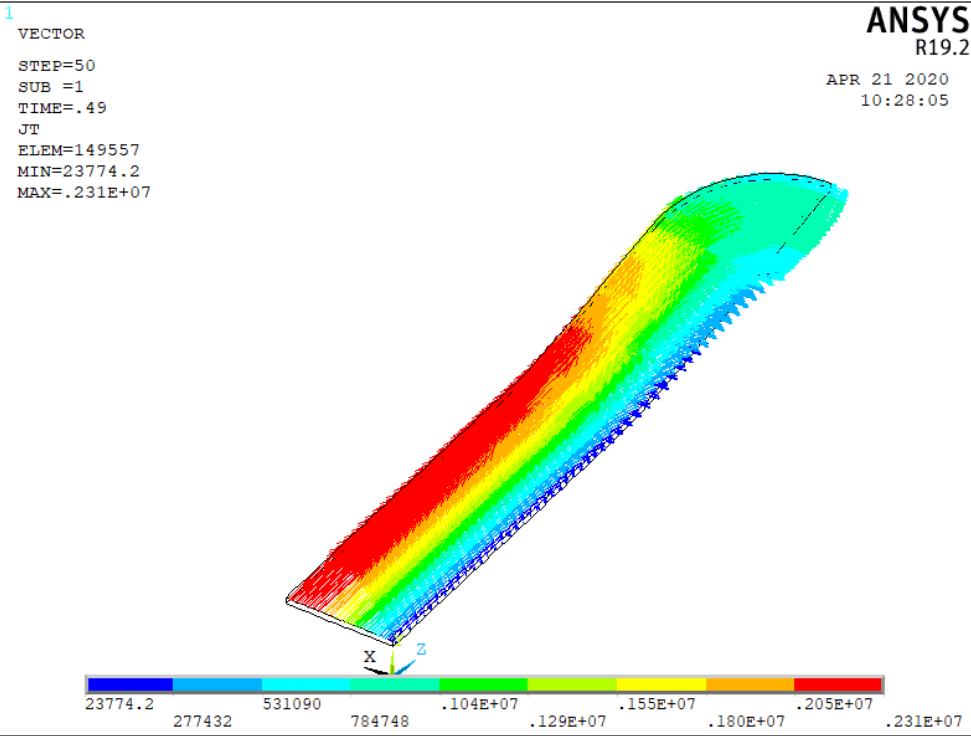


Evolution of eddy currents

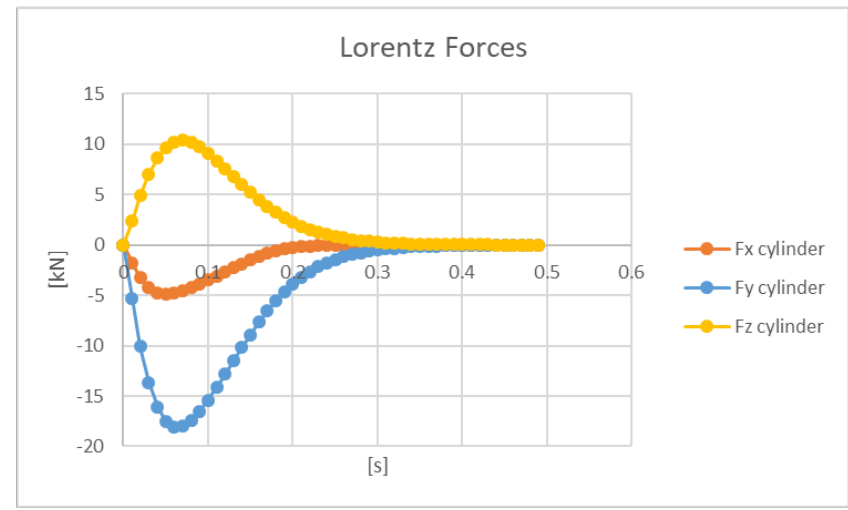
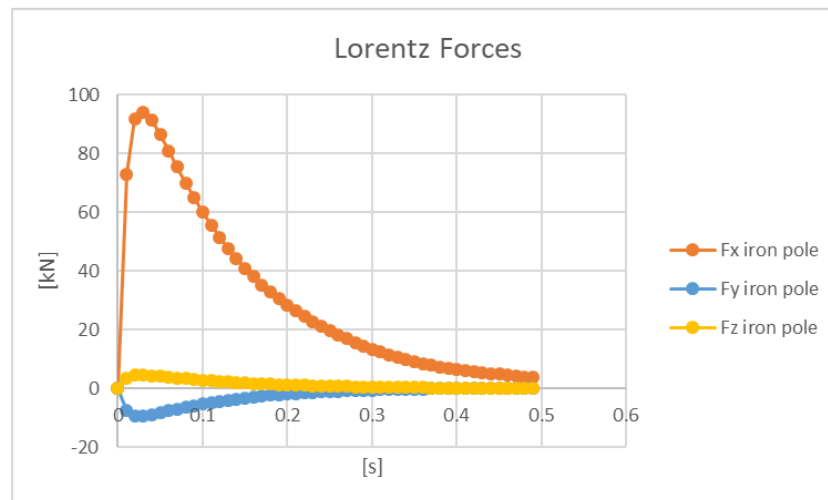
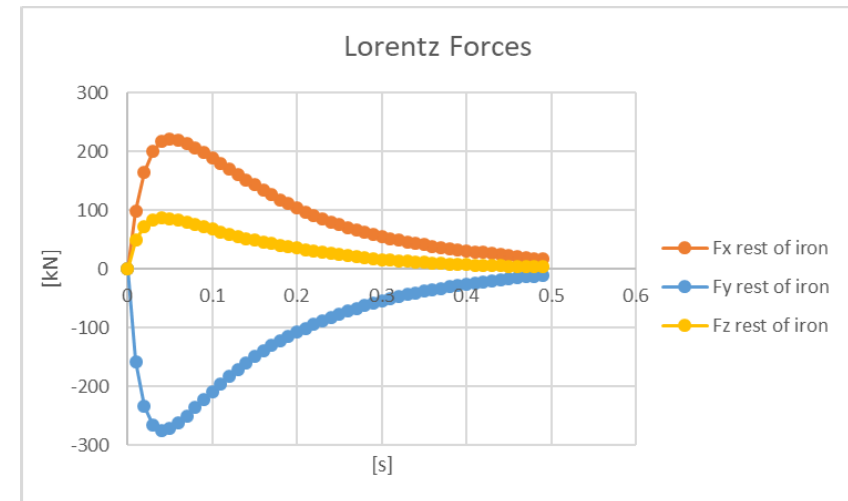
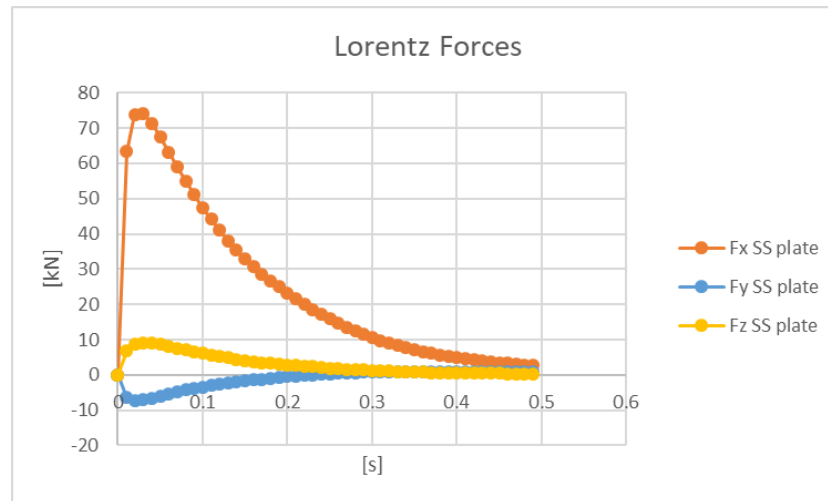
eddy currents



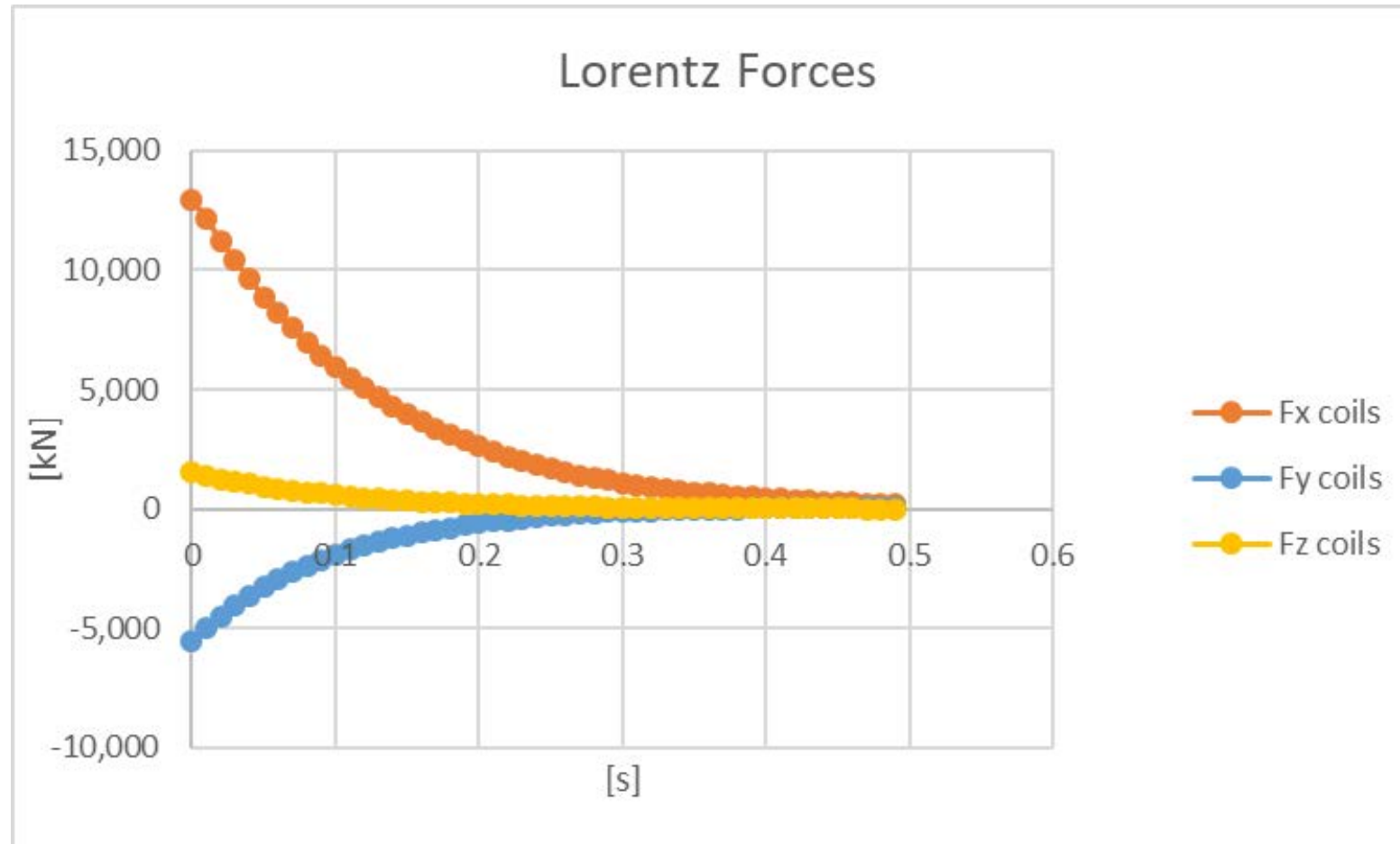
Eddy currents



Evolution of Lorentz forces for 1/8 of the magnet



Evolution of Lorentz forces for 1/8 of the magnet



- Thank you

Back up

